

# **PARTS MANUAL**

**Dishwasher**

HDW13V1W1 HA AA

Product Code

**61597-B**

AA

# **Haier**

# CONTENTS

---

|                          |    |
|--------------------------|----|
| Introduction             | 2  |
| Chassis & Tub components | 3  |
| Basket components        | 5  |
| Spray arm components     | 7  |
| Base & flood components  | 11 |
| Door components          | 13 |

# INTRODUCTION

---

| BRAND | VOLTAGE       | MODEL           | PRODUCT CODE |
|-------|---------------|-----------------|--------------|
| Haier | 220-240V 50Hz | HDW13V1W1 HA AA | 61597-B      |

---

## MODELS

- The model covered by this manual is listed on the front cover.
- The information detailed in this manual is subject to change without notice. The latest version is indicated by the reprint date and replaces any earlier editions.

## KIT PARTS

Where a part number is shown against the descriptions for these kit components, they are also available as separate items. In addition, some parts may be supplied with these kits that are not available as separate items, and are therefore either not listed, or a part number is not shown against the part description in this manual.

## PARTS LIST KEY

|          |  |
|----------|--|
| NI       | As a part reference, indicates the part is not illustrated on the diagram.         |
| NOT USED | As a part number, indicates the diagram part reference is not used in this manual. |
| NS       | As a part number, indicates the part is not servicable.                            |

---

## NZ

Fisher & Paykel Appliances Ltd  
78 Springs Road, East Tamaki  
Manukau 2013  
PO Box 58-546, Botany  
Manukau 2163  
New Zealand

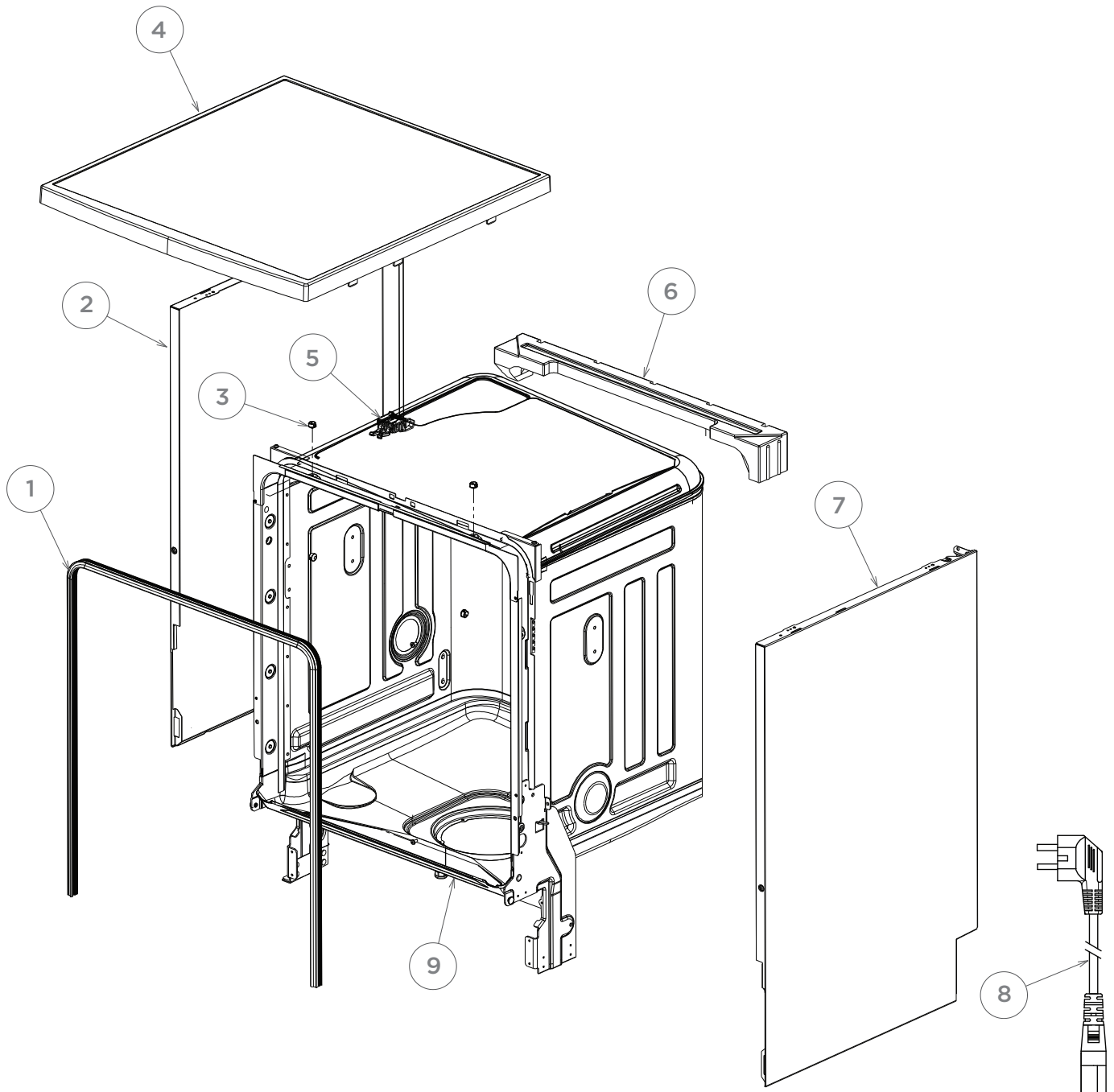
tel: (09) 2730660  
fax: (09) 2730580  
email: customer.care@fp.co.nz

## AU

Fisher & Paykel Customer Services Pty Ltd  
PO Box 798, Cleveland, QLD 4163  
A.C.N. 003 3335 171  
19 Enterprise Street  
Cleveland, QLD 4163  
Australia

tel: (07) 3826 9100  
fax: (07) 3826 9164  
email: customer.care@fp.com.au

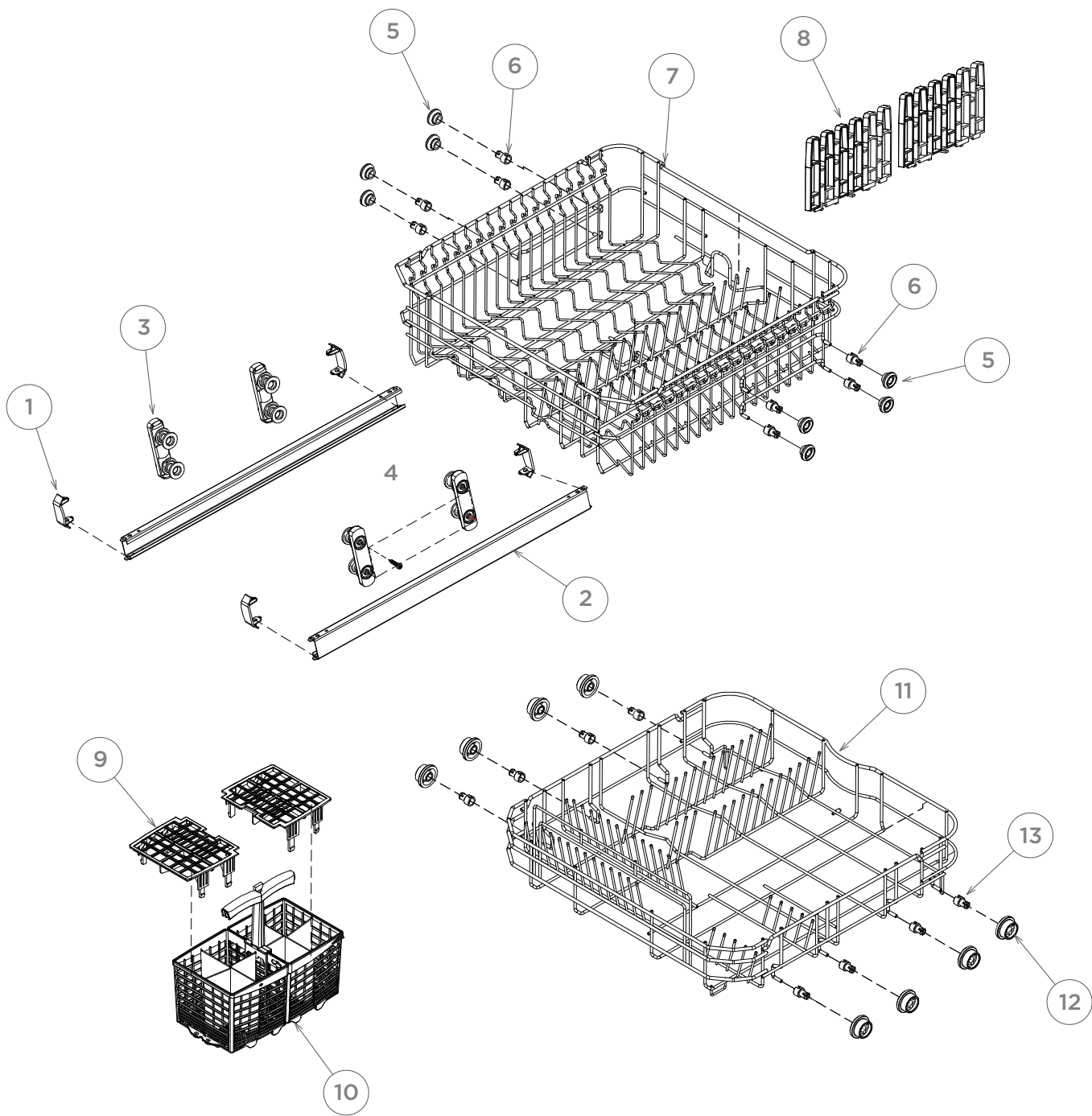
## CHASSIS & TUB COMPONENTS



## CHASSIS & TUB COMPONENTS

| REFERENCE | PART NUMBER  | PART DESCRIPTION              |
|-----------|--------------|-------------------------------|
| 1         | H0120300248E | GASKET TUB                    |
| 2         | H0120100582  | PANEL SIDE LH WHITE           |
| 3         | H0120200393  | PLUG                          |
| 4         | H0120800706  | COMPLETE TOP ASSY WHITE       |
| 5         | H0120803964  | DOOR LOCK/HOOK ASSEMBLY       |
| 6         | H0120201556  | SUPPORT CROSSPIECE UPPER REAR |
| 7         | H0120100584  | PANEL SIDE RH WHITE           |
| 8         | H0120400238B | POWER SUPPLY CABLE            |
| 9         | NS           | TUB ASSEMBLY                  |

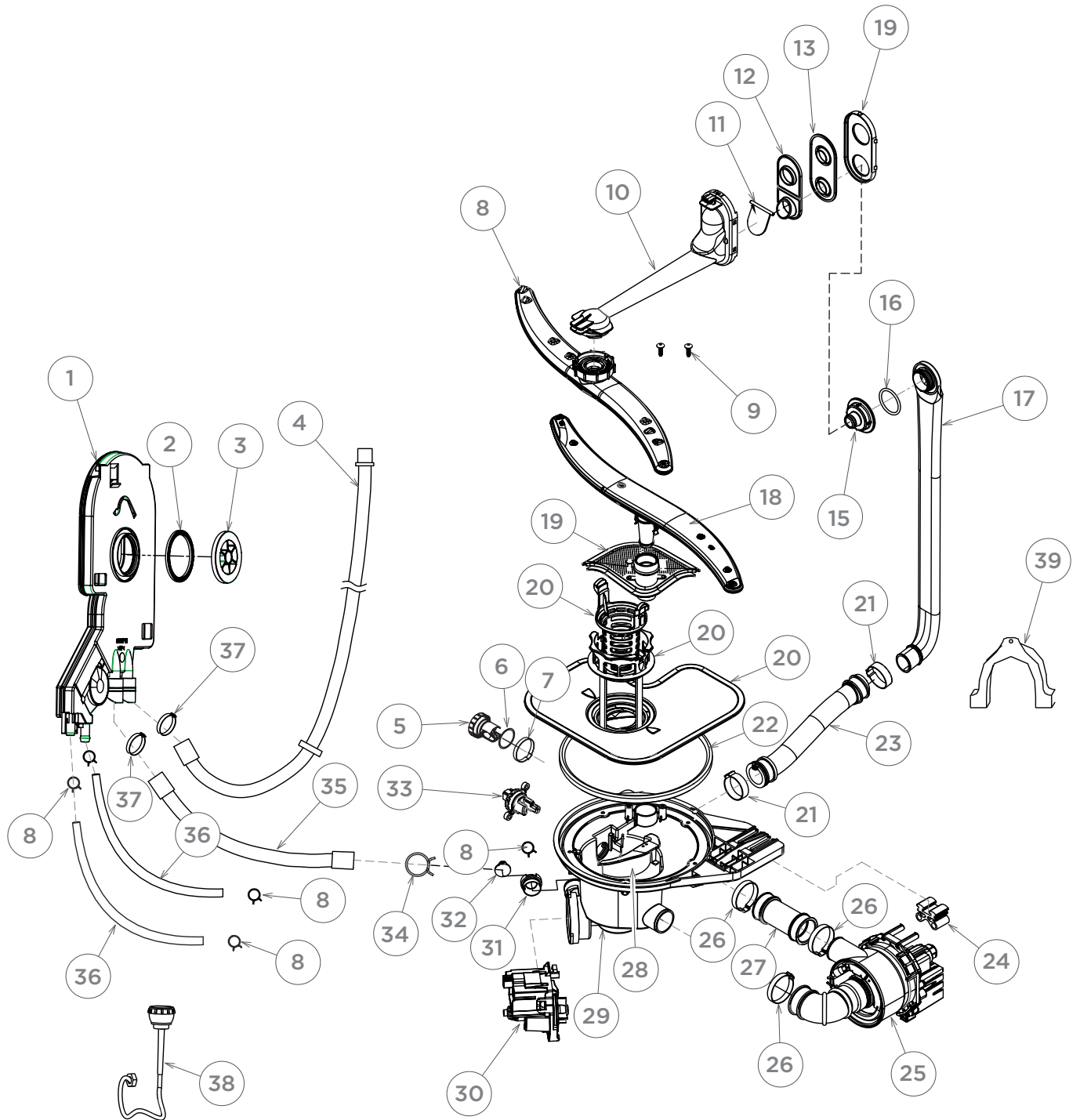
# BASKET COMPONENTS



## BASKET COMPONENTS

| REFERENCE | PART NUMBER  | PART DESCRIPTION       |
|-----------|--------------|------------------------|
| 1         | H0120200967  | ENDCAP RAIL GREY       |
| 2         | H0120100910  | RAIL BASKET            |
| 3         | H0120801989  | RAIL SUPPORT ASSY      |
| 4         | H012G8010101 | SCREW ST5 20-H-B       |
| 5         | H0120200328  | ROLLER UPPER BASKET    |
| 6         | H0120200329  | AXLE STUB UPPER BASKET |
| 7         | H0120106652E | BASKET UPPER           |
| 8         | H0120201235  | SHELF FOLD DOWN        |
| 9         | H0120202770  | GRID CUTLERY BASKET    |
| 10        | H0120801727  | BASKET CUTLERY GREY    |
| 11        | H0120106687E | BASKET LOWER           |
| 12        | H0120200377  | WHEEL LOWER BASKET     |
| 13        | H0120200324  | AXLE STUB LOWER BASKET |

## SPRAY ARM COMPONENTS

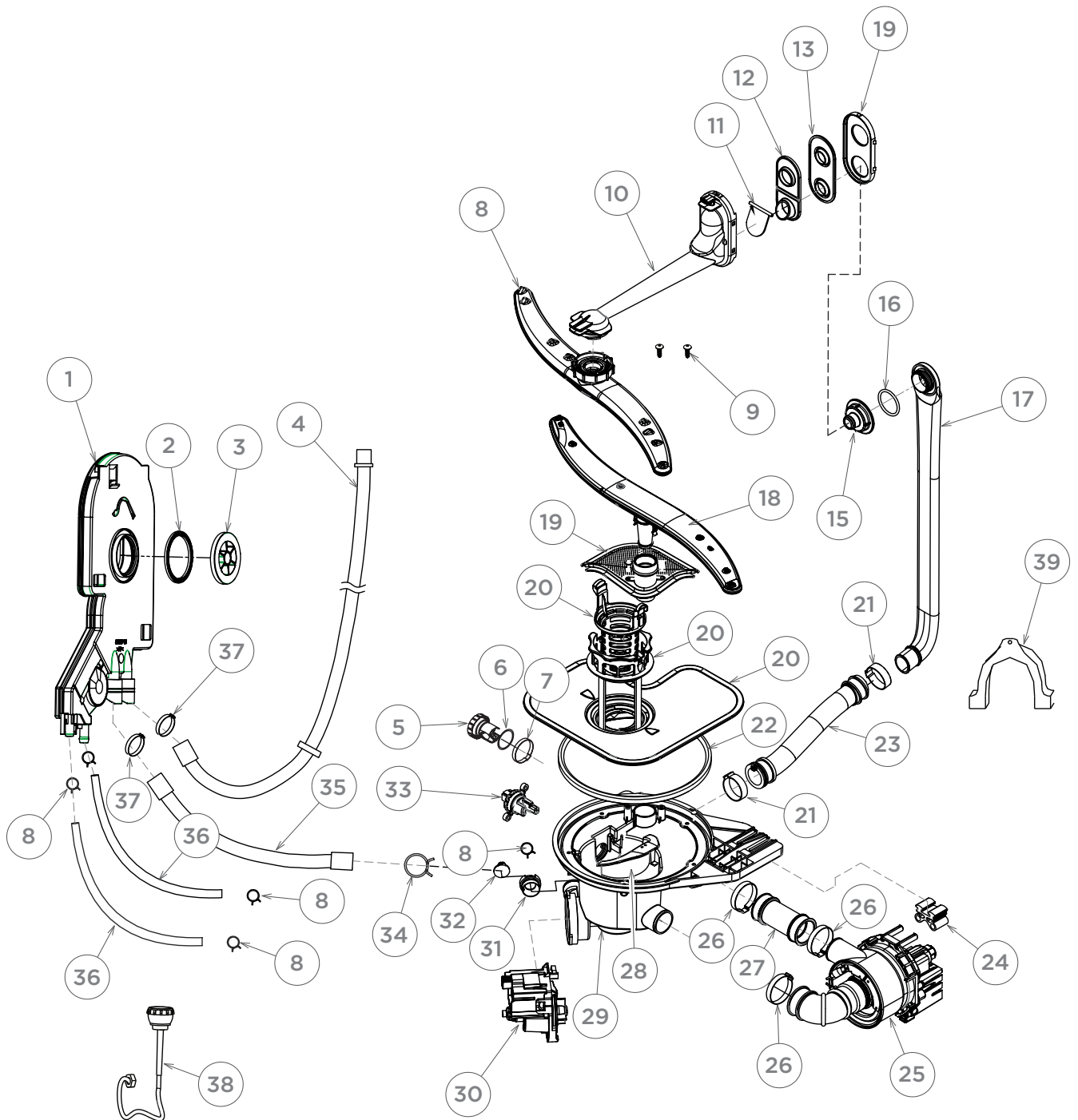


## SPRAY ARM COMPONENTS

| REFERENCE | PART NUMBER  | PART DESCRIPTION             |
|-----------|--------------|------------------------------|
| 1         | H0120801702A | WEIR INCL FLOW METER         |
| 2         | H0120200382  | O-RING GASKET WEIR           |
| 3         | H0120200401  | NUT BREATHER RING WEIR       |
| 4         | H0120200643  | HOSE DRAIN (LONG)            |
| 5         | H0120200396  | COVER FOR SUMP               |
| 6         | H0120200764  | O RING GASKET                |
| 7         | H0120600020  | CLAMP HOSE                   |
| 8         | H0120202776  | SECOND SPRAYER ASSEMBLY      |
| 9         | H0120600160  | SCREW NST4.2 X 13            |
| 10        | H0120202778B | TRANSITION TOP GREY          |
| 11        | H0120202675  | VALVE FLAP UPPER SPRAYARM    |
| 12        | H0120202780B | HOUSING FLAP VALVE           |
| 13        | H0120300947  | SEAL TUBE TOP SPRAYARM       |
| 14        | H0120202779B | COVER TOP TRANSITION GREY    |
| 15        | H0120201630  | BASE SECOND SPRAYER          |
| 16        | H0120300212  | O-RING GASKET                |
| 17        | H0120201603A | OUTER DUCT CONNECTION        |
| 18        | H0120200366  | LOWER SPRAYER                |
| 19        | H0120200367  | COVER LOWER SPRAYER          |
| 20        | H0120801704  | FILTER ASSEMBLY DW60         |
|           | Includes     | FILTER COARSE                |
|           | Includes     | FILTER MICRO STAINLESS       |
|           | Includes     | FILTER FLAT EXTRACTABLE SS   |
| 21        | 791097       | CLAMP HOSE 20-32MM           |
| 22        | H0120200357  | GASKET SUMP                  |
| 23        | H0120200376  | HOSE DIVERTER OUTER DUCT     |
| 24        | H0120200359A | MOUNT RUBBER WASH PUMP       |
| 25        | H0120400178A | WASH PUMP(1PS) & HEATER ASSY |
| 26        | 791197       | CLAMP HOSE 32-50MM           |
| 27        | H0120300779  | PIPE DIVERTER MOTOR PUMP     |
| 28        | H0120200378  | SCREEN SUMP OUTLET           |
| 29        | H0120802652  | SUMP ASSEMBLY                |
| 30        | H0120400050B | DRAIN PUMP                   |
| 31        | H0120200374  | FRAME NON RETURN VALVE       |

Continued on next page

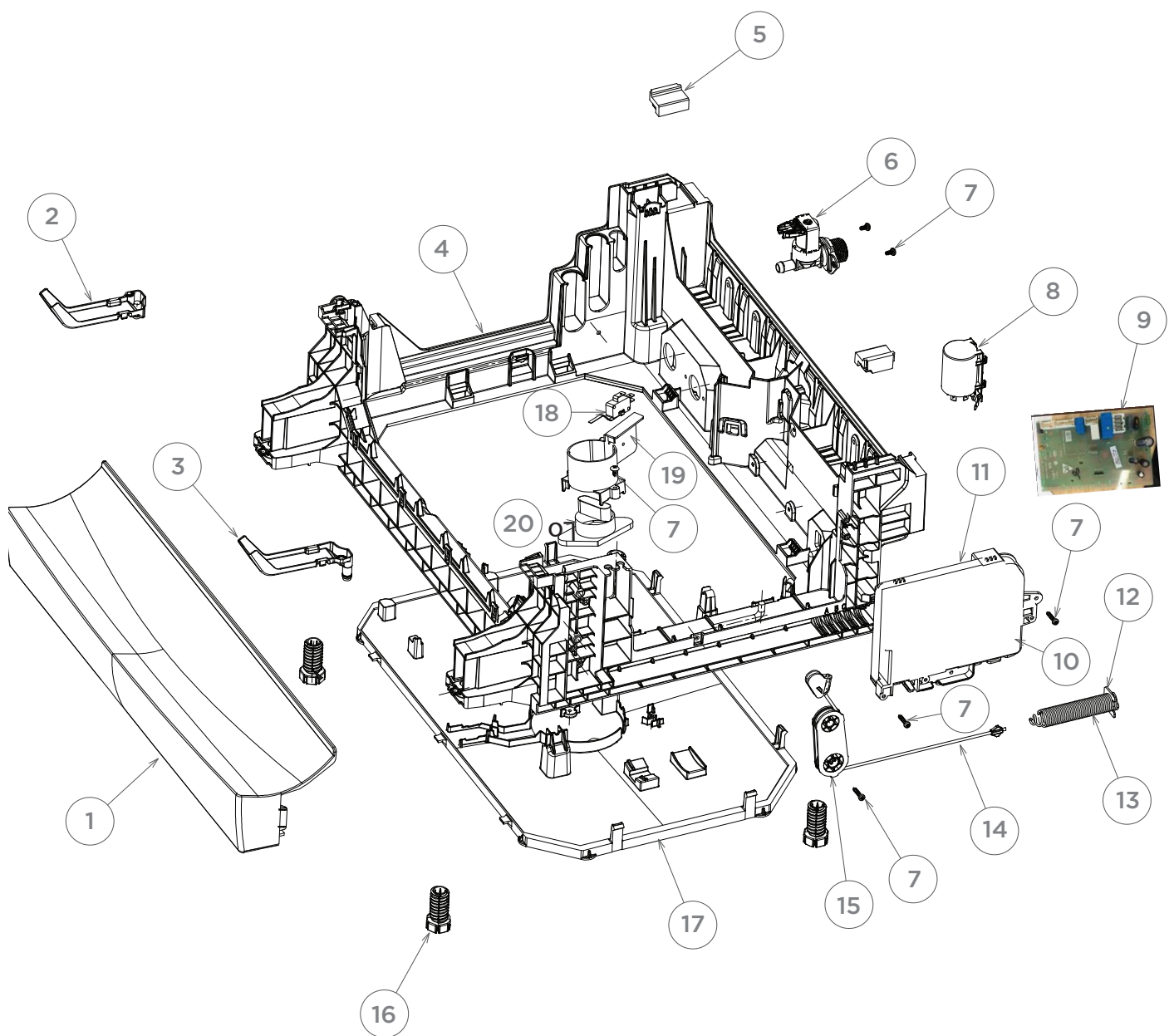
# SPRAY ARM COMPONENTS



## SPRAY ARM COMPONENTS

| REFERENCE | PART NUMBER  | PART DESCRIPTION            |
|-----------|--------------|-----------------------------|
| 32        | H0120200373  | FLAP NON RETURN VALVE       |
| 33        | H0120400076  | SENSOR TEMP/TURBIDITY (EMZ) |
| 34        | H0120600848  | CLAMP DRAIN HOSE            |
| 35        | H0120200672  | HOSE DRAIN SHORT            |
| 36        | H0120200543B | HOSE                        |
| 37        | H0120600027  | HOSE CLAMP                  |
| 38        | 529855       | HOSE INLET ASSY AA TW KR    |
|           | 422680P      | HOSE INLET LONG (2M) PKD    |
| 39        | 420667P      | U-SUPPORT FOR DRAIN HOSE    |

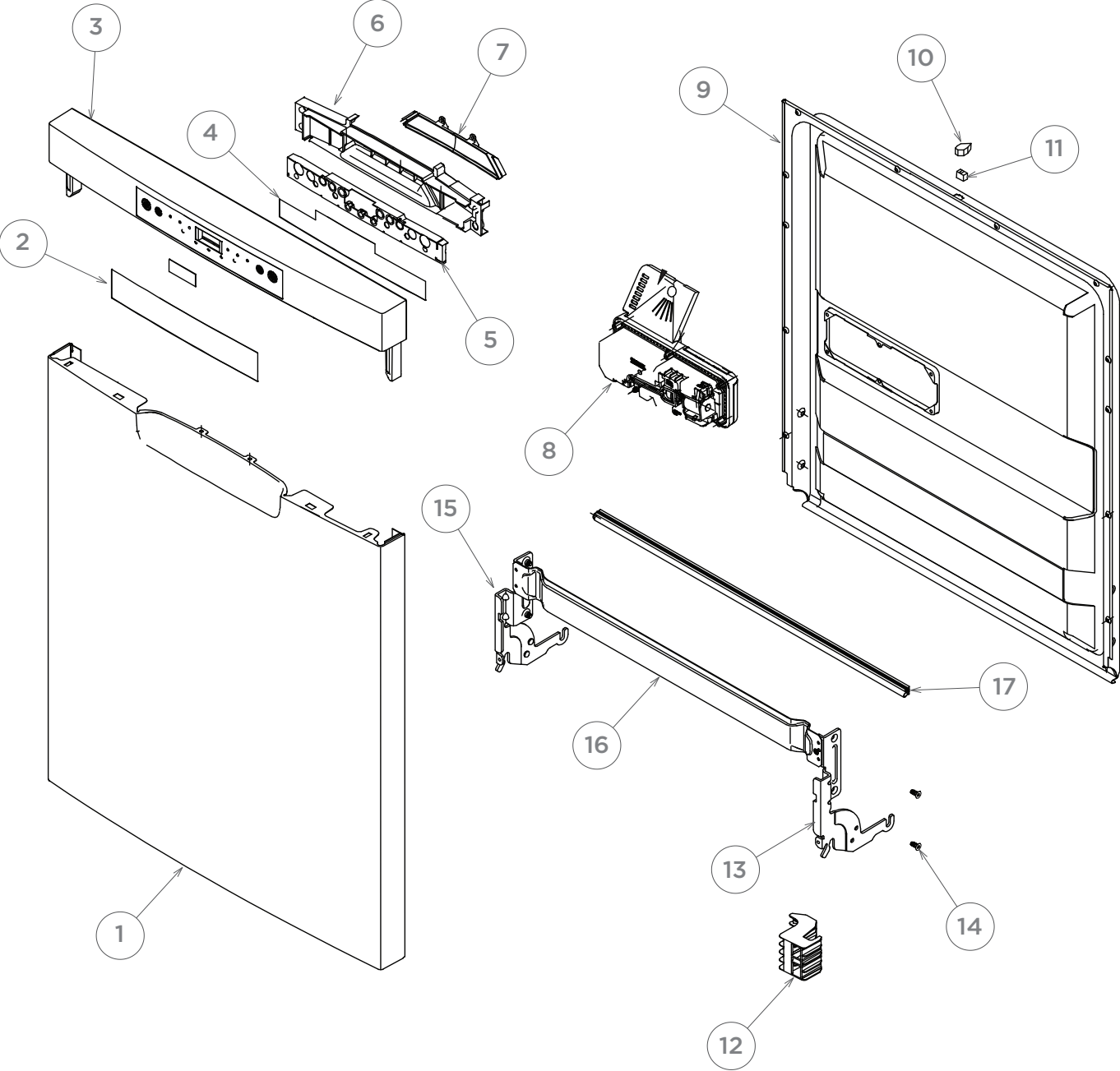
## BASE & FLOOD COMPONENTS



## BASE & FLOOD COMPONENTS

| REFERENCE | PART NUMBER   | PART DESCRIPTION             |
|-----------|---------------|------------------------------|
| 1         | H0120200520   | BASEBOARD WH                 |
| 2         | H0120202075   | PLATE PLASTIC OVERFLOW LH    |
| 3         | H0120202076   | PLATE PLASTIC OVERFLOW RH    |
| 4         | H0120202090   | FRAME BOTTOM BASE            |
| 5         | H0120300158   | PAD VIBRATION                |
| 6         | H0120400055G  | VALVE INLET SPADE TERMINAL   |
| NI        | H0120806350   | HARNESS CONTROL CABLE BTM SV |
| 7         | H012G8010123  | BOLT                         |
| 8         | H0124000821A  | FILTER                       |
| 9         | H0121800129   | PCB MAINBOARD                |
| 10        | H0120202002   | COVER COMPUTER BOARD         |
| 11        | H0120202000   | BOX COMPUTER BOARD           |
| 12        | H0120101905   | CLIP SPRING                  |
| 13        | H0120101902   | HINGE SPRING                 |
| 14        | H0120803837   | SPRING CONNECTION ROPE       |
| 15        | H0120202079   | PULLEY                       |
| 16        | H0120202078   | FOOT FREESTANDING            |
| 17        | H0120202077   | TRAY BOTTOM BASE             |
| 18        | H012G6050040A | MICRO SWITCH FLOAT SWITCH    |
| 19        | H0120202056   | BRACKET FLOAT SWITCH         |
| 20        | H0120505219   | FLOAT FLOOD SWITCH           |

# DOOR COMPONENTS



## DOOR COMPONENTS

| REFERENCE | PART NUMBER  | PART DESCRIPTION            |
|-----------|--------------|-----------------------------|
| 1         | H0120100585K | DOOR OUTER PANEL WH         |
| 2         | H0120502429  | LENS CONTROL PANEL          |
| 3         | H0120202087  | CONTROL PANEL WHITE         |
| 4         | H0121800114A | PCB MAINBOARD               |
| 5         | H0120300391  | GASKET                      |
| 6         | H0120201671A | UPPER HANDLE                |
| 7         | H0120201670A | LOWER HANDLE                |
| 8         | H0120400073  | DETERGENT DISPENSER         |
| 9         | H0120100241  | DOOR INNER                  |
| 10        | H0120201944  | DOOR STRIKE                 |
| 11        | H0120201945  | DOOR LATCH                  |
| 12        | H0120200785B | BLOCK SUPPORT               |
| 13        | H0120101900  | HINGE ASSY RIGHT            |
| 14        | H0120600023  | SCREW M5 10 SS              |
| 15        | H0120101899  | HINGE ASSY LEFT             |
| 16        | H0120100369A | PANEL HINGE LOWER DOOR      |
| 17        | H0120200356  | GASKET INNER DOOR           |
| NI        | H0120501936A | USER/INSTALL GUIDE V1 HA AA |

**FISHERPAYKEL.COM**

© Fisher & Paykel Appliances 2020. All rights reserved.

The product specifications in this document apply to the specific products and models described at the date of issue. Under our policy of continuous product improvement, these specifications may change at any time. You should therefore check with your Dealer to ensure this document correctly describes the product currently available.

**AA**

**PRODUCT CODE: 61597-B 01.20**