

Parts Manual Electric Cooktop

Model:
CE302CBX1 FP AA

Product Code:
80655-A



care

PRODUCTS

Brand Fisher & Paykel
Voltage 220-240V, 50/60Hz
Model CE302CBX1 FP AA
Product Code 80655-A

Fisher & Paykel Appliances Ltd
78 Springs Road,
East Tamaki,
PO Box 58-732, Botany,
Manukau 2163,
New Zealand
Telephone: 09 273 0600
Facsimile: 09 273 0656
E-mail: customer.care@fp.co.nz

Fisher & Paykel Australia Pty Ltd
A.C.N. 003 335 171
19 Enterprise Street
P O Box 798
Cleveland,
Queensland 4163
Telephone: 07 3826 9100
Facsimile: 07 3826 9164
E-mail: customer.care@fp.com.au

Contents

HOBTOP & BASE PAN.....	6
------------------------	---

GUIDE TO USING THIS MANUAL

The model covered by this manual is listed on the front cover.

The information detailed in this manual is subject to change without notice. The latest version is indicated by the reprint date and replaces any earlier editions.

The front cover picture shows the type of product and may not necessarily be an exact image of the model covered by the manual.

Kit Parts

Kit components are shown in *italics*. Where a part number is shown against the descriptions for these kit components, they are also available as separate items. In addition, some parts may be supplied with these kits that are not available as separate items, and are therefore either not listed, or a part number is not shown against the part description in this manual.

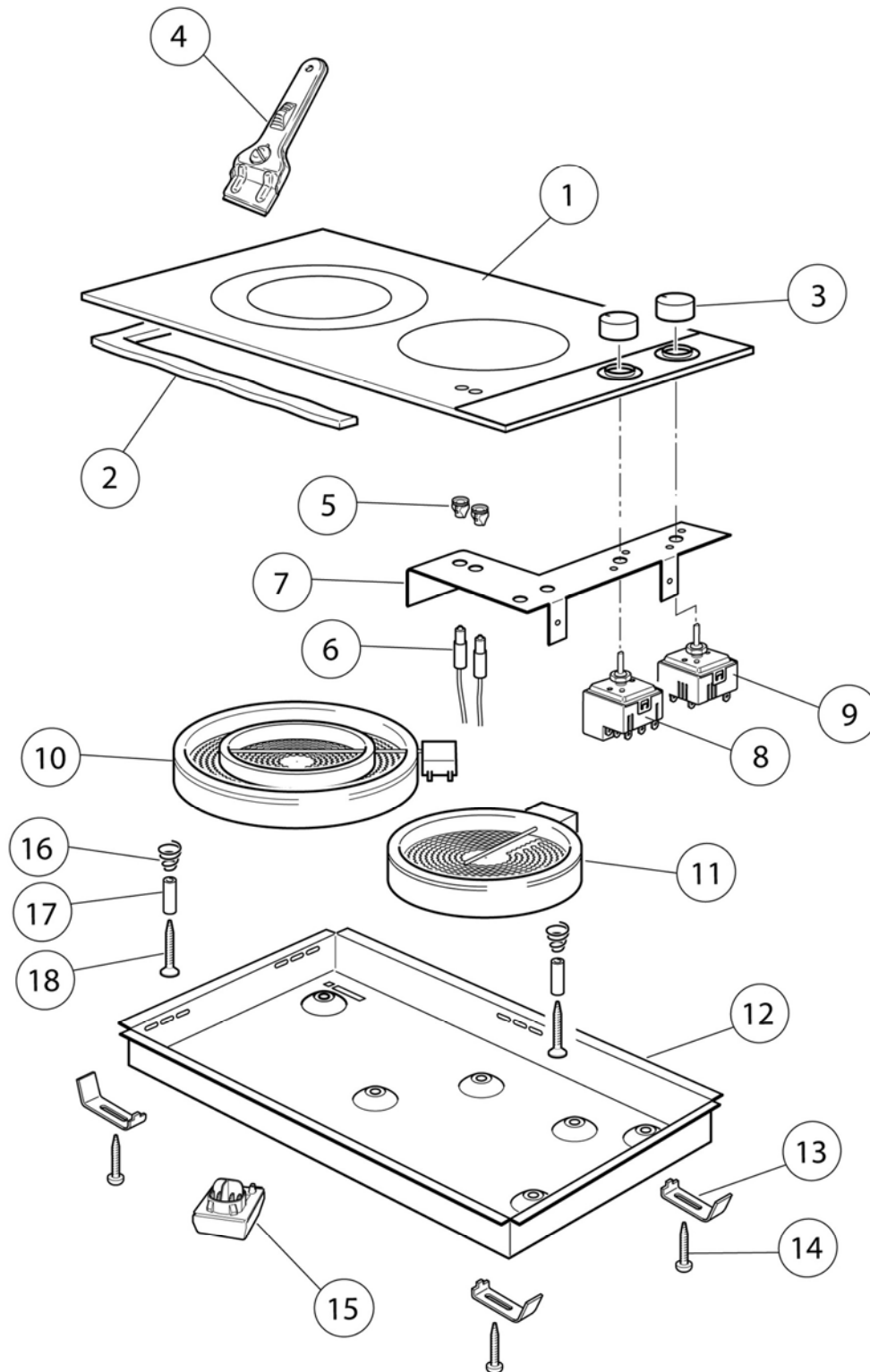
Parts List Key

<i>italics</i>	Kit components or parts included are shown in <i>italics</i> . Refer to above notes: Kit Parts
NI	As a part reference, indicates the part is not illustrated on the diagram.
NOT USED	As a part number, indicates the diagram part reference is not used in this manual.

Abbreviations

FP = Fisher & Paykel
AA = Australasia

HOBTOP & BASE PAN



HOBTOP & BASE PAN

Ref	Part	Description
1	533634P	GLASS & TRIM ASSY CE302CBX1 FP
2	533067	GASKET HOBTOP
3	533329	KNOB CYLINDER CE
4	533349	SCRAPER
5	533185	BEZEL NEON
6	533583	NEON RED
7	533635	BRACKET REGULATORS
8	532009P	ENERGY REG MDP110 DUAL
9	532008P	ENERGY REG MP101 SINGLE
10	533618P	ELEMENT DOUBLE 180/120MM
11	575420P	ELEMENT HL D=140
12	533636	BASEPAN CE302CBX1
13	533345	BRACKET INSTAL
14	533496P	SCREW BRACKET INSTAL (PKT 10)
15	533061	TERMINAL BLOCK
16	575021	SPRING ELEMENT
17	575075	SPACER ELEMENT
18	573964P	SCREW ELEMENT (PKT 10)
NI	533638	WIRING HARNESS CE302CBX1
NI	599578	BOOK USR/INSTLCE604/905C AA GB