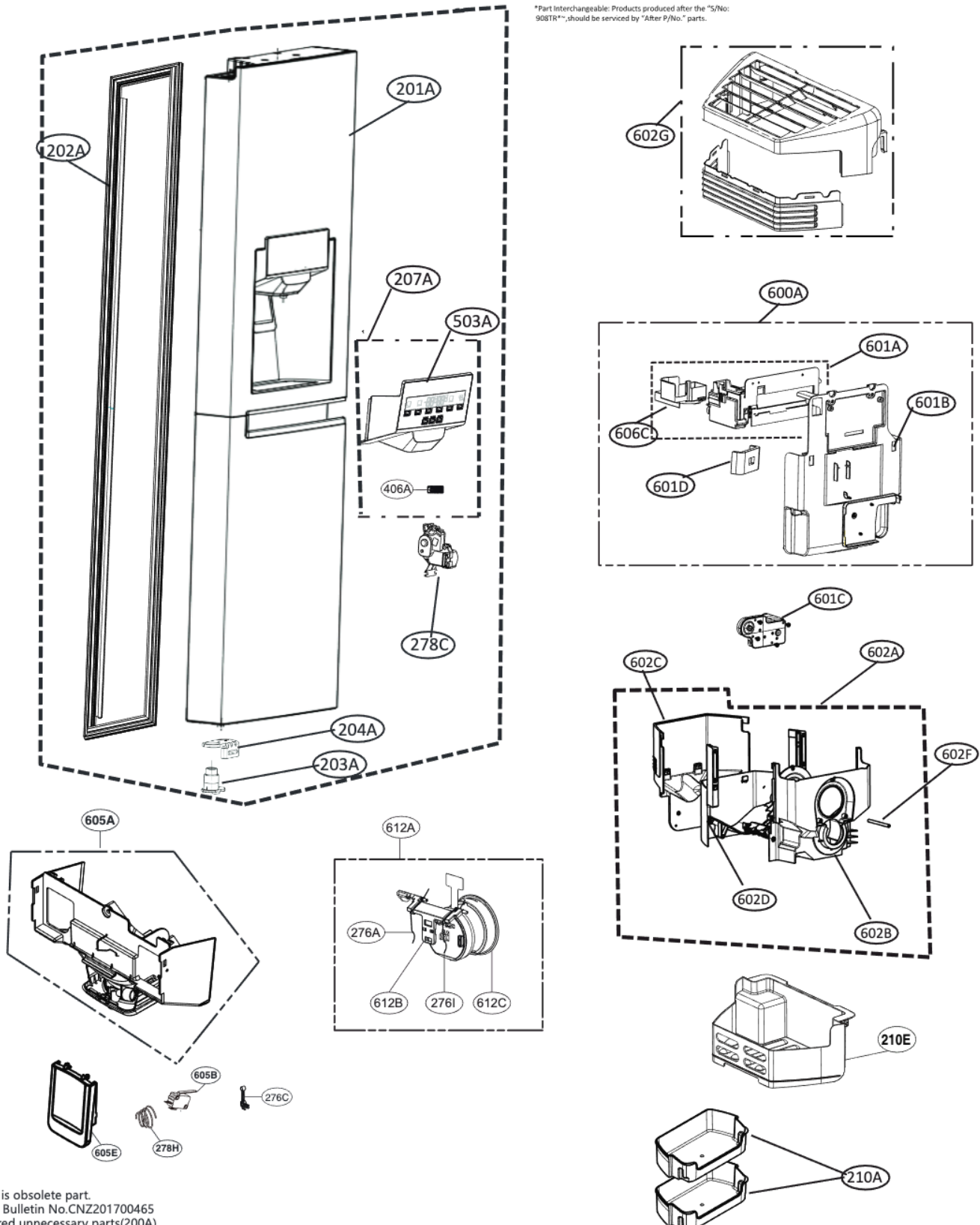


# EXPLODED VIEW

## FREEZER DOOR PART

SVC. Loc.	Description	P/No.	
		Before	After
601C	Motor, AC Indoor	EAU60784230	EAU64063301
600A	Dispenser Assembly, Ice	EAU61563111	ACZ74070603
201A	Door Foam Assembly, Freezer	ADD75176228	ADD75176270

\*Part interchangeable: Products produced after the "S/No: 908TR\*", should be serviced by "After P/No." parts.

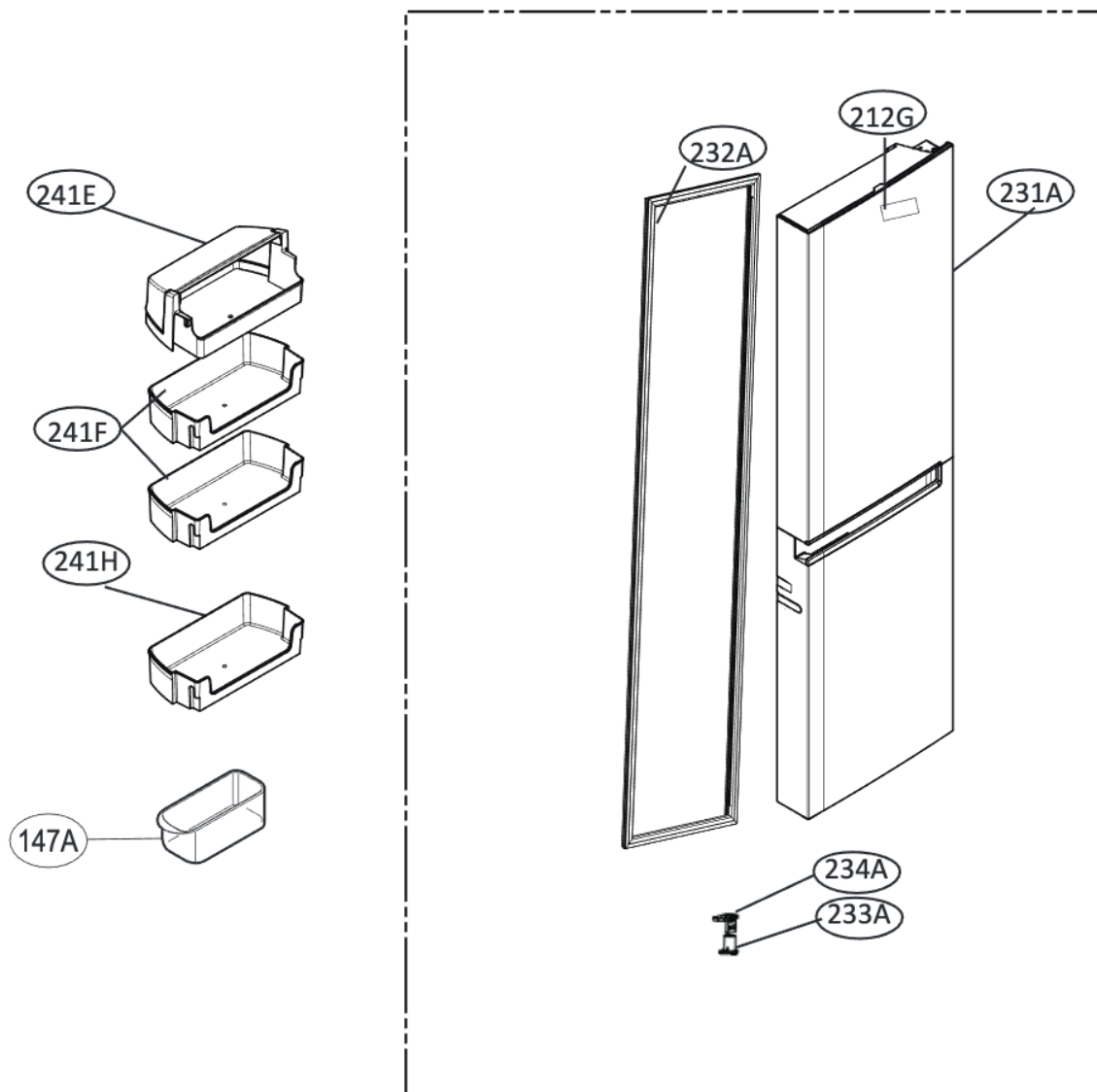


※200A is obsolete part.  
Service Bulletin No.CNZ201700465  
registered unnecessary parts.(200A)

※This model doesn't have 702A part.  
Service Bulletin No. CNZ201700295 registered  
unnecessary parts.

# EXPLODED VIEW

## REFRIGERATOR DOOR

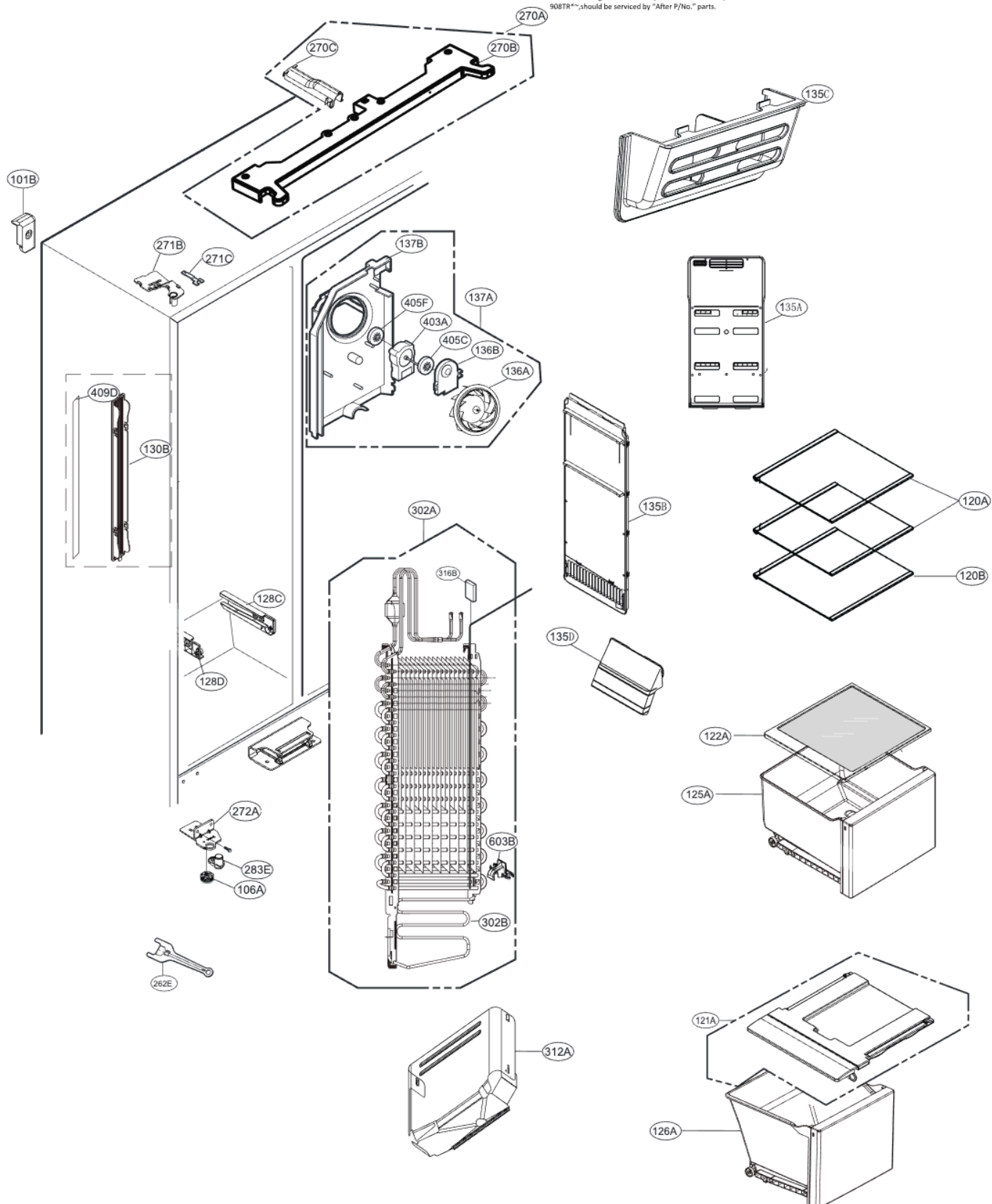


# EXPLODED VIEW

## FREEZER COMPARTMENT

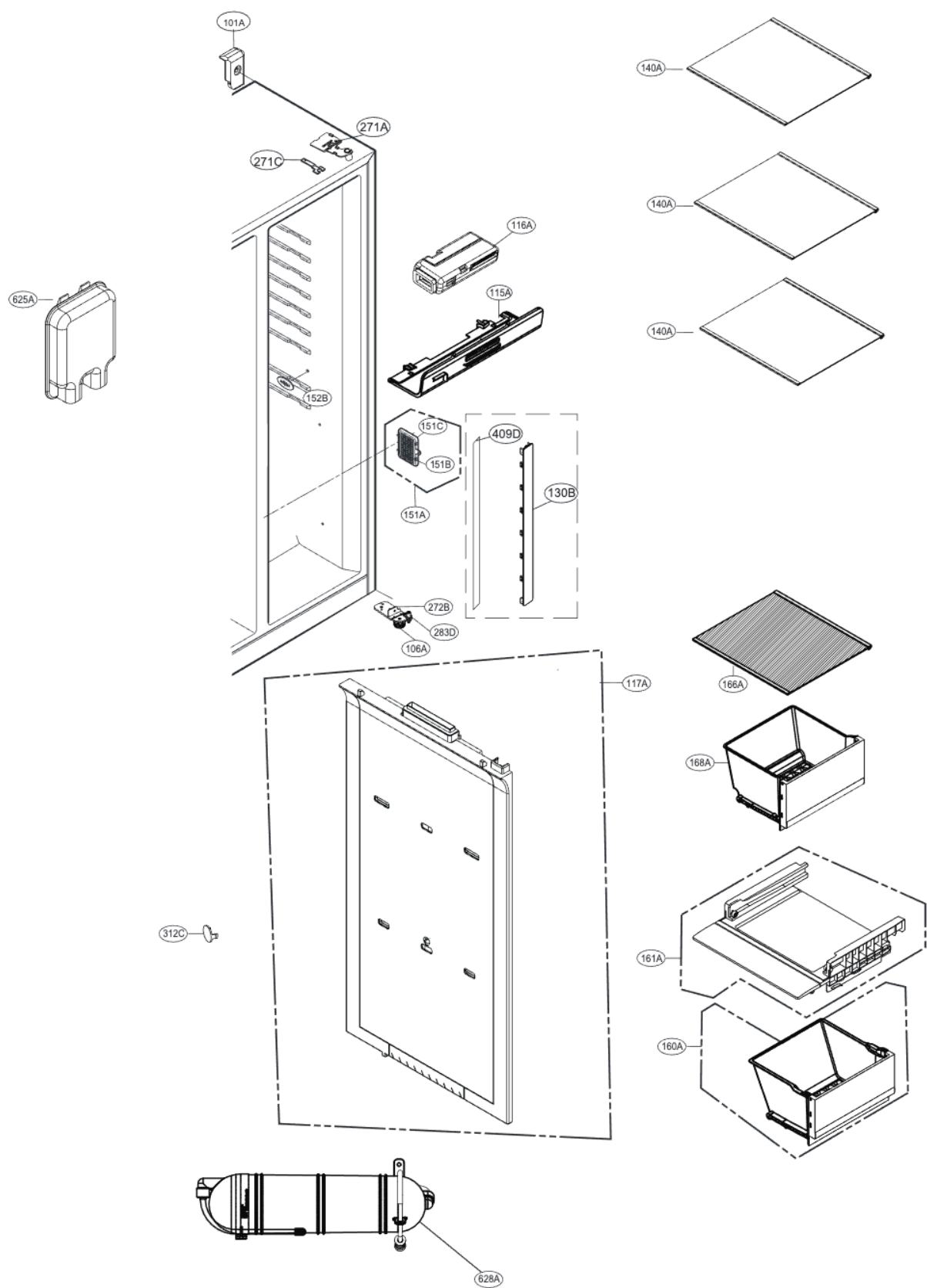
SVC Loc	Description	P/No.	
		Before	After
270A	Cover Assembly/Hinge	ACQ88631852	ACQ90870501

\*Part Interchangeable: Products produced after the "S/No: 908TR\*\*" should be serviced by "After P/No." parts.



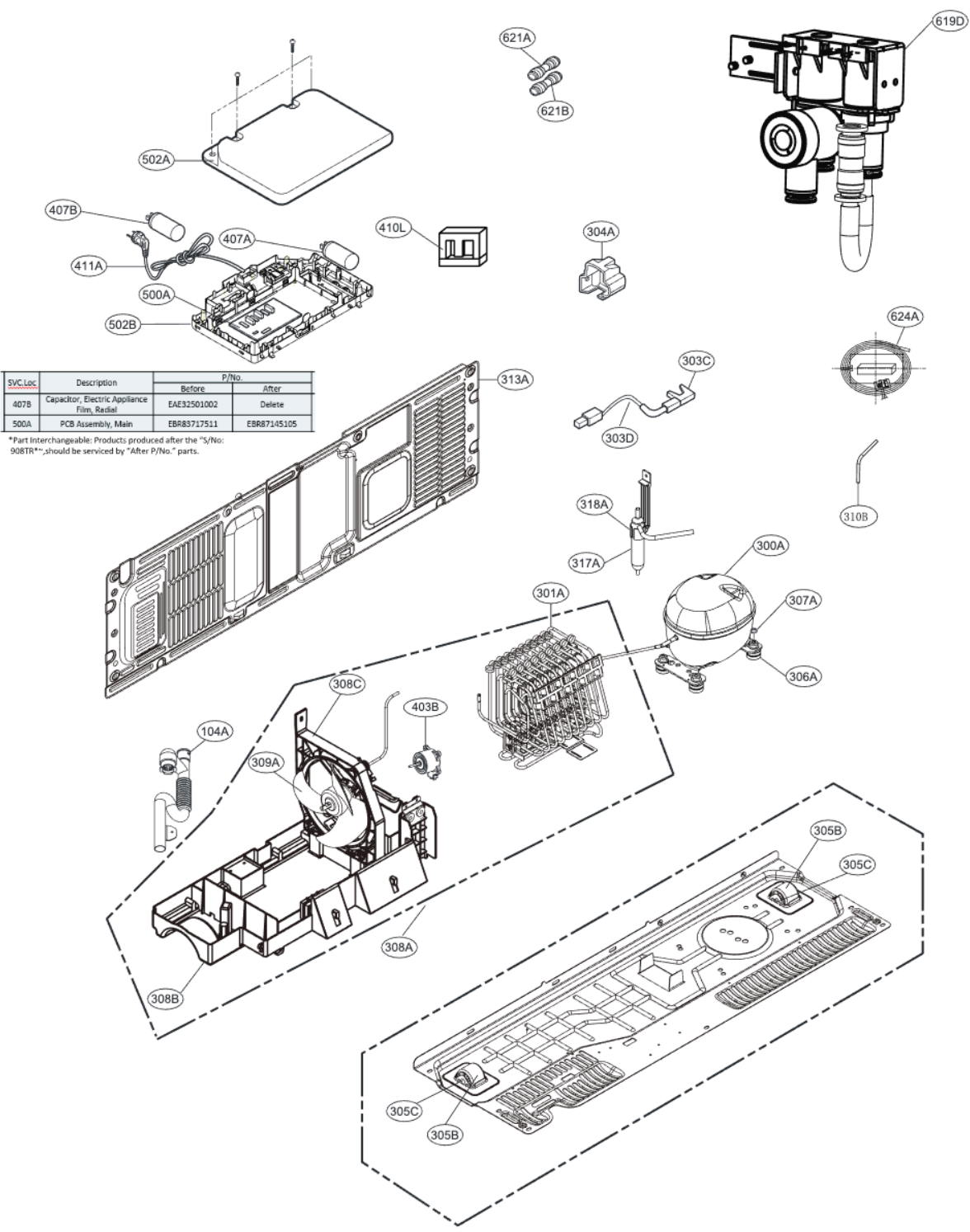
# EXPLODED VIEW

## REFRIGERATOR COMPARTMENT



# EXPLODED VIEW

## MACHINE COMPARTMENT



SVC Loc	Description	P/No.	
407B	Capacitor, Electric Appliance Film, Radial	Before	After
		EAE32501002	Delete
500A	PCB Assembly, Main	EBR83717511	EBR87145105

\*Part interchangeable: Products produced after the "S/No: 908TR" should be serviced by "After P/No." parts.