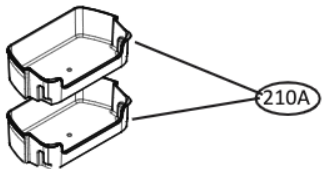
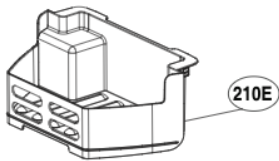
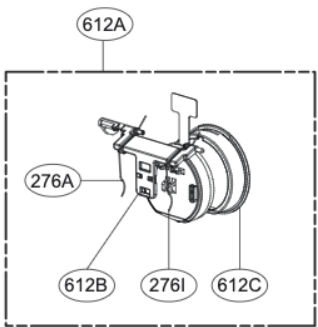
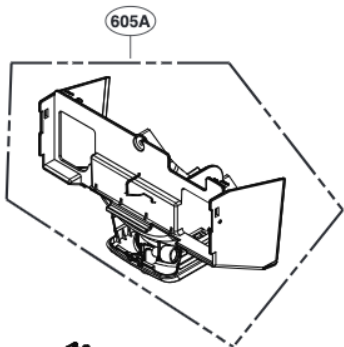
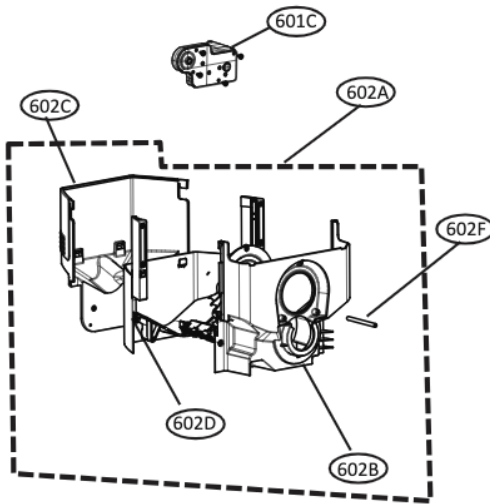
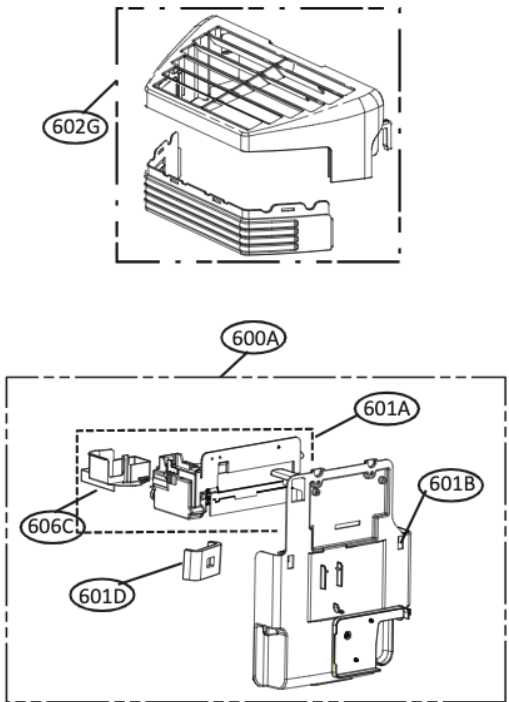
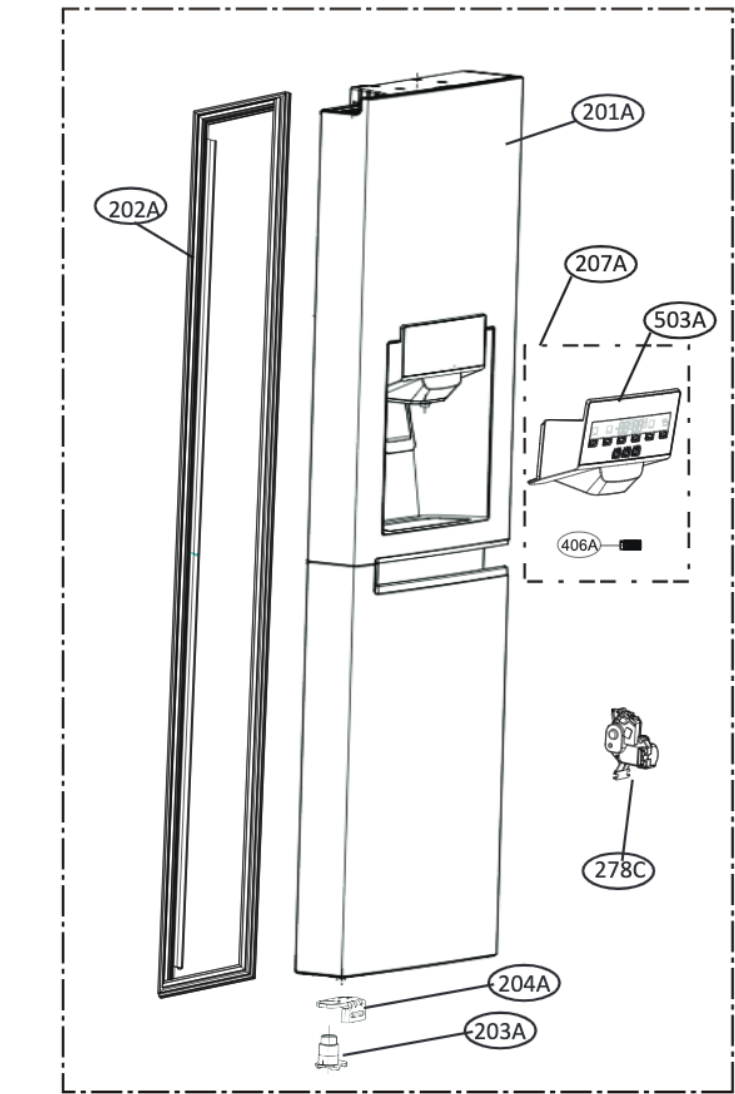


EXPLODED VIEW

FREEZER DOOR PART

SVC. Loc.	Description	P/No.	
		Before	After
601C	Motor, AC Indoor	EAU60784230	EAU64063301
600A	Dispenser Assembly, Ice	EAU61563111	AC274070603
201A	Door Foam Assembly, Freezer	AD075176228	ADD75176270

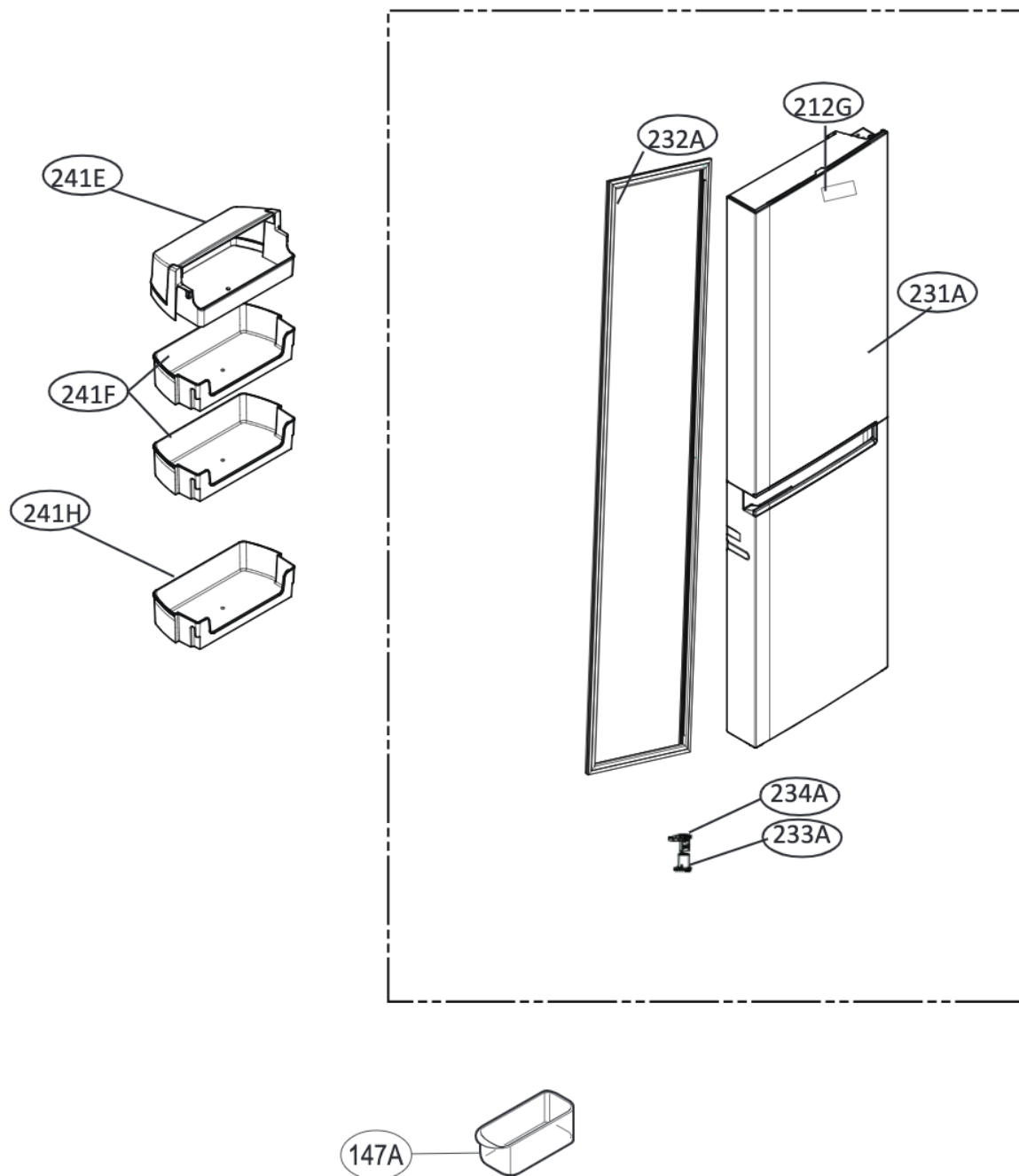
*Part Interchangeable: Products produced after the "S/No: 908TR"; should be serviced by "After P/No.1" parts.



※200A is obsolete part.
Service Bulletin No.CNZ201700467
registered unnecessary parts(200A)

EXPLODED VIEW

REFRIGERATOR DOOR

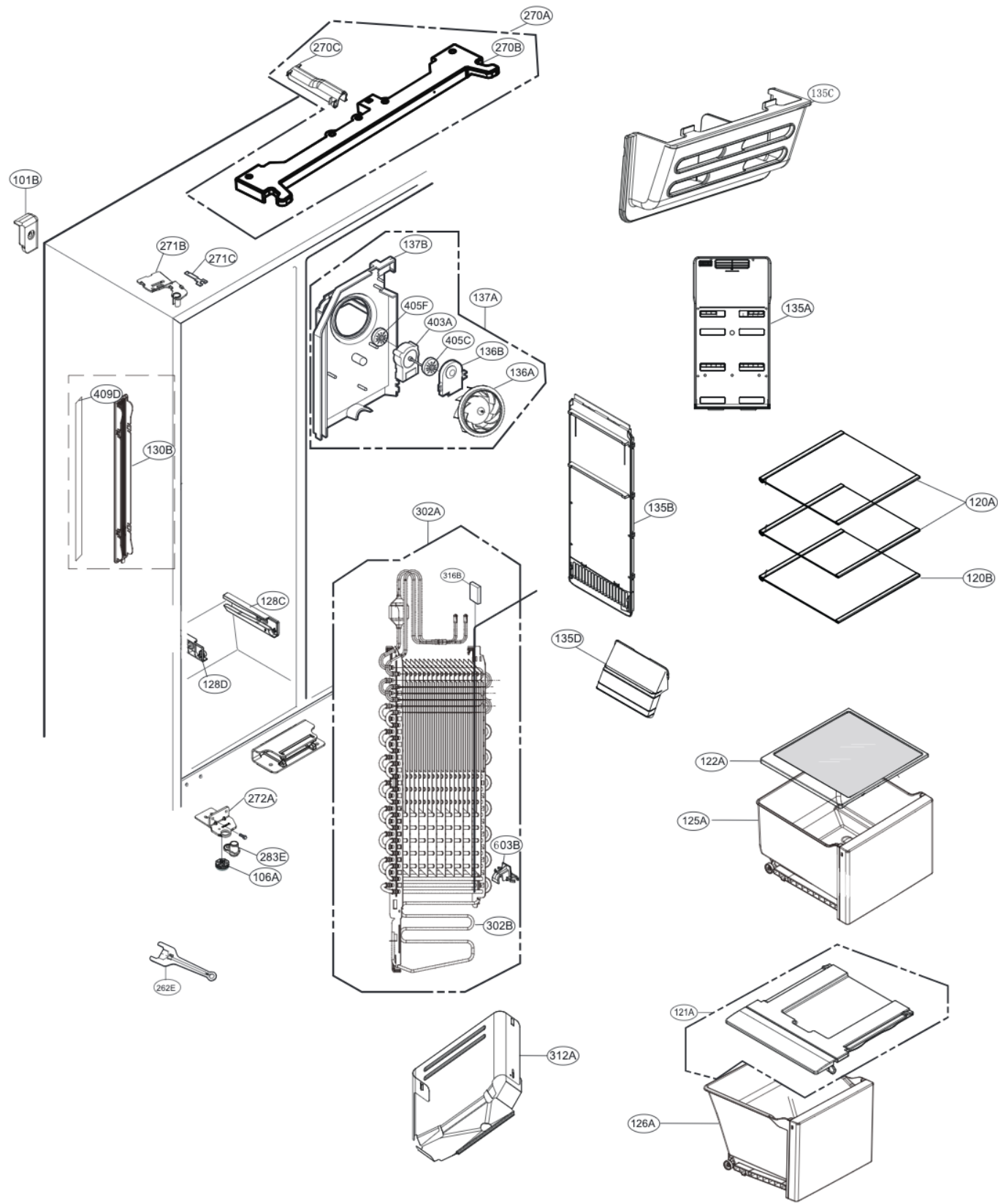


EXPLODED VIEW

FREEZER COMPARTMENT

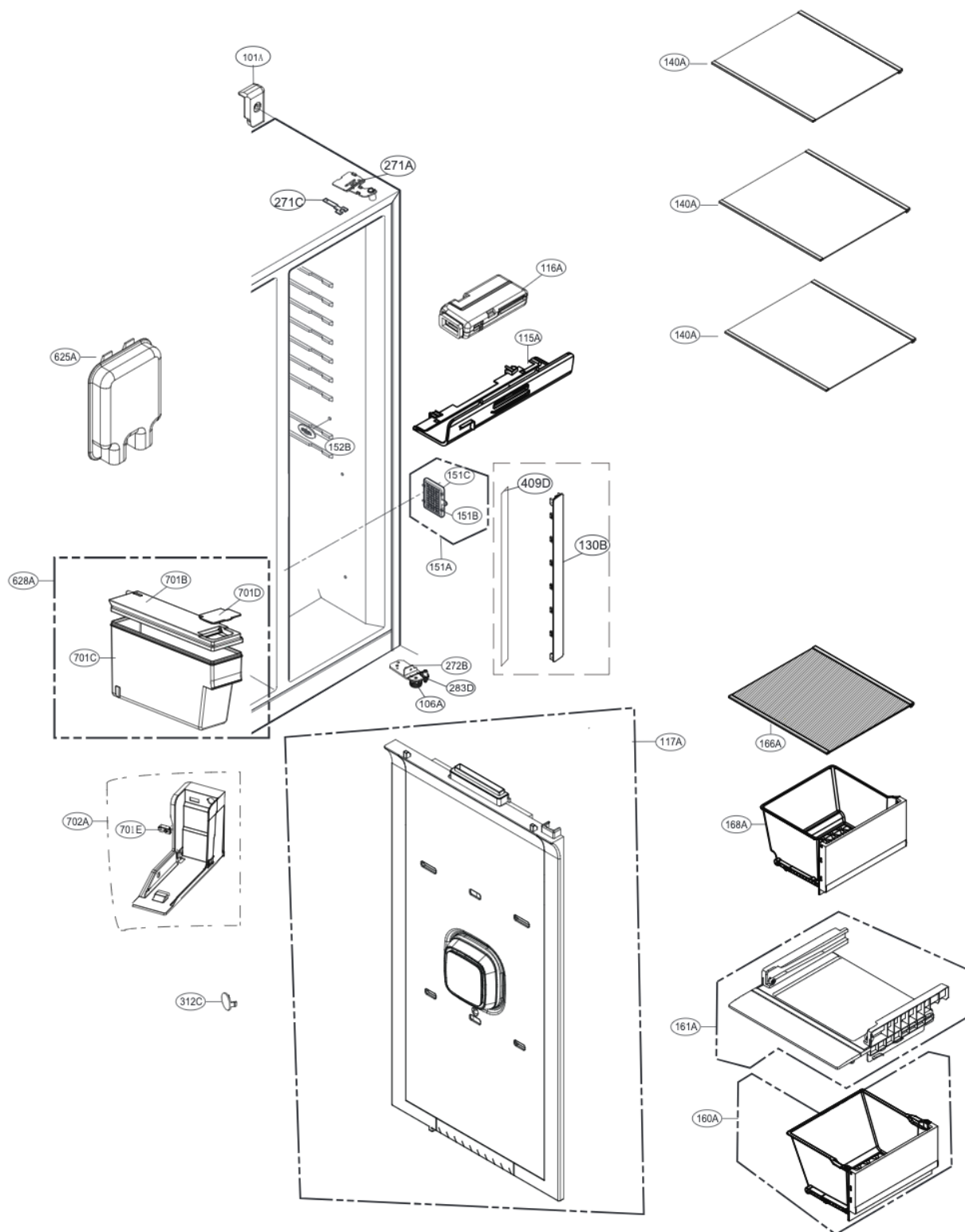
SVC. Loc.	Description	P/No.	
		Before	After
270A	Cover Assembly, Hinge	ACQ88631847	ACQ90870503

*Part interchangeable: Products produced after the "S/No: 908TR**" should be serviced by "After P/No." parts.



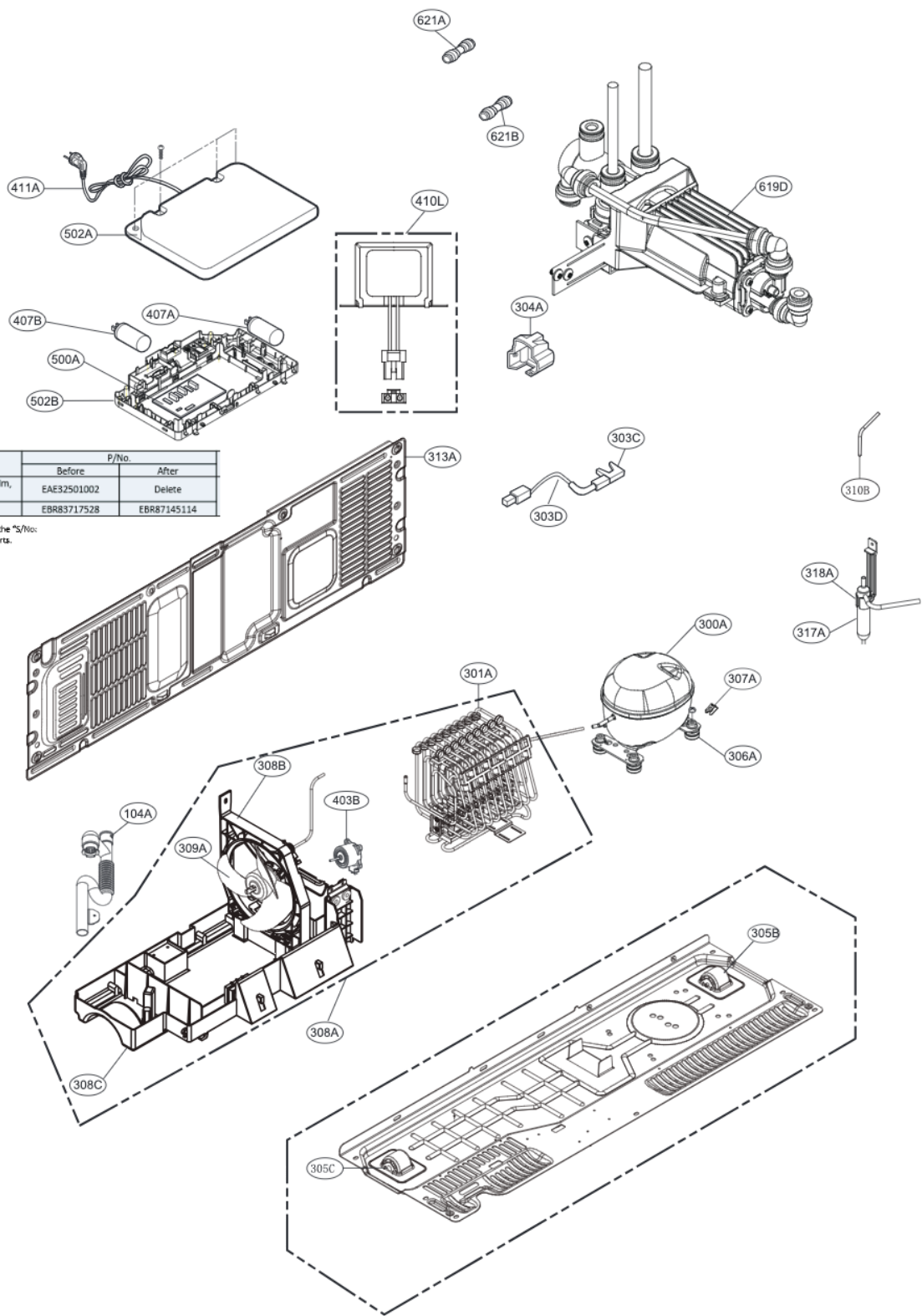
EXPLODED VIEW

REFRIGERATOR COMPARTMENT



EXPLODED VIEW

MACHINE COMPARTMENT



SVC. Loc.	Description	P./No.	
		Before	After
407B	Capacitor, Electric Appliance Film, Radial	EAE32501002	Delete
500A	PCB Assembly, Main	EBR83717528	EBR87145114

*Part interchangeable: Products produced after the "S/No: 908TR**" should be serviced by "After P/No." parts.