

# Contents

- 1. SPECIFICATIONS..... 2
- 2. STRUCTURE OF THE WASHING MACHINE..... 3
- 3. DIRECTIONS FOR INSTALLATION AND USE..... 4
  - INSTALLATION OF THE UNDER BASE COVER ..... 4
  - HOW TO INSTALL ON AN INCLINED PLACE ..... 4
  - HOW TO CONNECT THE INLET HOSE ..... 5
  - HOW TO CLEAN ..... 6
- 4. FEATURE AND TECHNICAL EXPLANATION..... 7
  - FEATURE OF THE WASHING MACHINE..... 7
  - WATER CURRENT TO ADJUST THE UNBALANCED LOAD ..... 7
  - FUNCTION FOR SOAK WASH ..... 7
  - AUTOMATIC WATER SUPPLY SYSTEM FOR WASH..... 7
  - AUTOMATIC DRAINING TIME ADJUSTMENT ..... 8
  - CIRCULATING-WATER COURSE AND LINT FILTER ..... 8
  - RESIDUAL TIME DISPLAY ..... 8
- 5. DIRECTIONS FOR DISASSEMBLY AND ADJUSTMENT..... 9
  - KEY POINTS IN DISSASSEMBLY ..... 9
  - METHOD OF DISASSEMBLING THE CONTROL PANEL..... 9
  - GEAR MECHANISM ASS'Y REPLACEMENT ..... 10
  - DRAIN MOTOR AND VALVE REPLACEMENT ..... 11
- 6. TROUBLE SHOOTING GUIDE..... 12
  - TEST PROGRAM (TEST WITHOUT WATER)..... 12
  - CONCERNING NO ACTION (THE INDICATOR IS OFF)..... 12
  - CONCERNING NO ROTATION IN WASHING..... 13
  - CONCERNING NO SPINNING..... 13
  - CONCERNING NO WATER FILLING..... 13
  - CONCERNING NO DRAINING..... 14
  - CONCERNING KEEP FILLING WATER..... 14
  - CONCERNING TOO MUCH NOISE IN WASHING..... 15
  - CONCERNING TOO MUCH NOISE IN SPINNING..... 15
  - CONCERNING TIME-OUT IN BRAKE..... 16
  - TROUBLE-SHOOTING TABLE..... 17
- 7. USAGE OF THE OPERATION BUTTONS..... 18
- 8. CIRCUIT DIAGRAM..... 20
- 9. PARTS DIAGRAM..... 22

# 1. SPECIFICATIONS

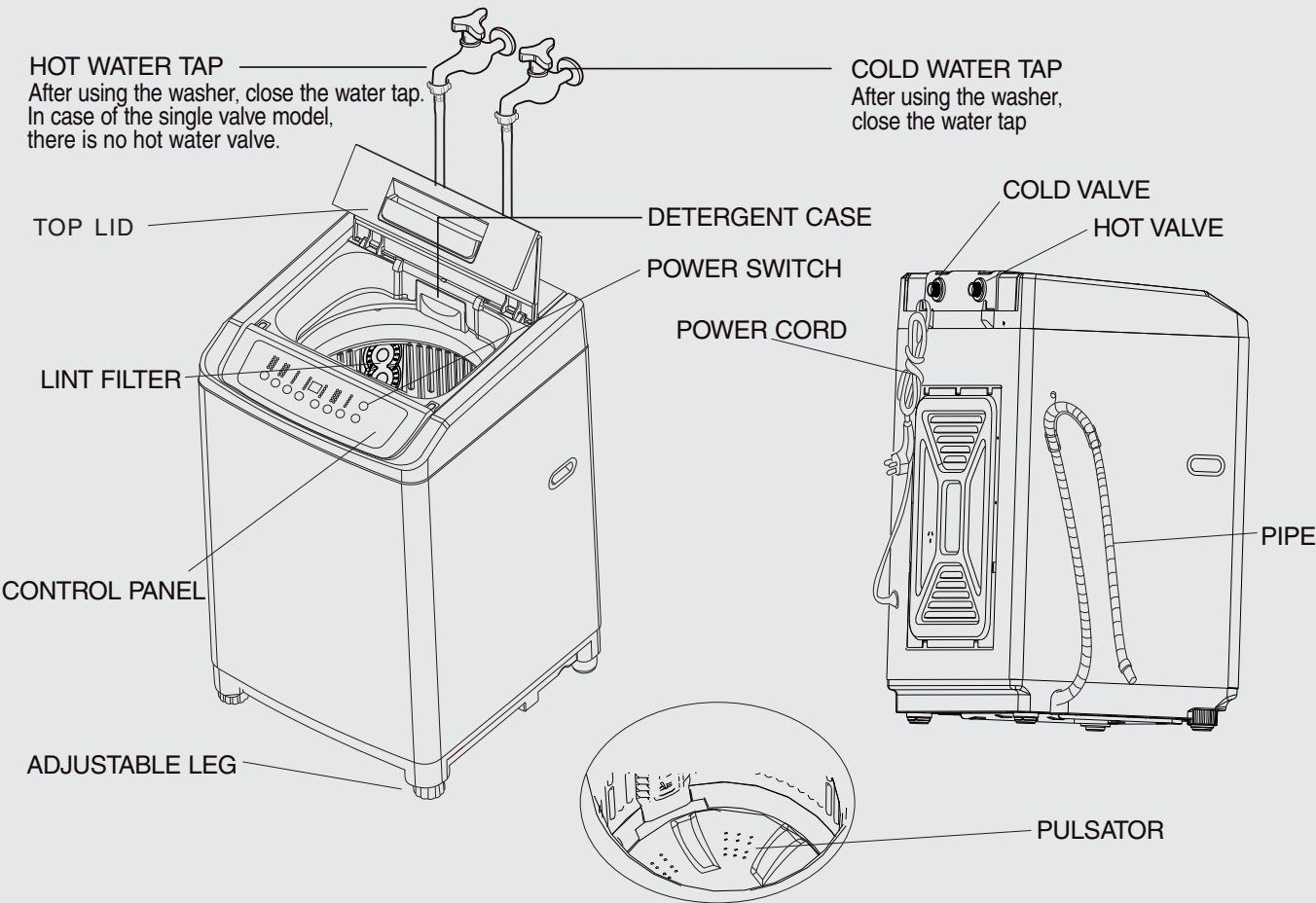
NO.	ITEM		XQB50-5238	
1	POWER SOURCE		AVAILABLE IN ALL LOCAL AC VOLTAGE AND CYCLE	
2	POWER CONSUMPTION		50Hz	325W
			60Hz	325W
3	MACHINE WEIGHT		NON-PUMP	31.5Kg
			PUMP	32.5Kg
4	DIMENSION (WXHXD)		540 X 900 X 545	
5	WASHING COURSE		FULL AUTOMATIC 5 COURSE (NORMAL,HEAVY,JEANS,GENTLE,SPEEDY )	
6	WATER CONSUMPTION		95 L	
7	WATER LEVEL SELECTOR		10	50 L
			9	47 L
			8	44 L
			7	40 L
			6	36 L
			5	32 L
			4	28 L
			3	25 L
			2	22L
			1	18 L
8	OPERATING WATER PRESSURE		0.03~0.78MPa	
9	REVOLUTION PER MINUTE	50Hz	WASH : 125 - 140 RPM, SPIN : 700 - 720 RPM	
		60Hz	WASH : 120 - 130 RPM, SPIN : 630 -660 RPM	
10	PULSATOR(mm)		6WINGS(Ø345mm)	
11	WATER LEVEL CONTROL		ELECTRONICAL SENSOR	
12	GEAR MECHANISM ASS`S		PLANET GEAR	
13	LINT FILTER		YES	
14	FUNCTION OF SOAK WASH		YES	
15	ALARM SIGNAL		YES	
16	RESIDUAL TIME DISPLAY		YES	
17	AUTO. WATER SUPPLY		YES	
18	AUTO RE-FEED WATER		YES	
19	AUTO POWER OFF		YES	

## 2. STRUCTURE OF THE WASHING MACHINE

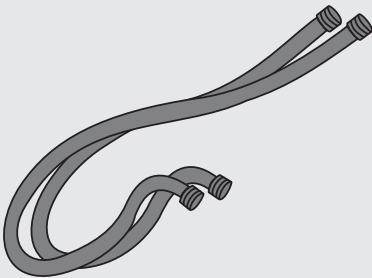
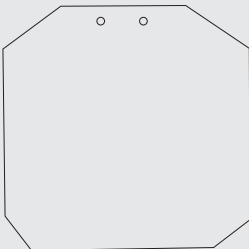

The parts and features of your washer are illustrated on this page.  
Become familiar with all parts and features before using your washer.

**NOTE**

♥The drawing in this book may vary from your washer model. They are designed to show the different features of all models covered by this book. Your model may not include all features.



### Accessories

	water inlet hose (2pcs)	Under cover(1pcs)	tapping screws(2pcs)
			

### 3. DIRECTIONS FOR INSTALLATION AND USE

#### INSTALLING PLACE

Install the washer on a horizontal solid floor. If the washer is installed on an unsuitable floor, it could make considerable noise and vibration.

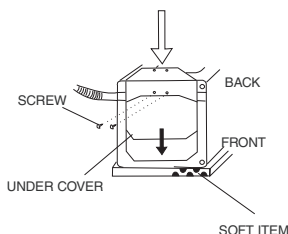


#### Never install in these places

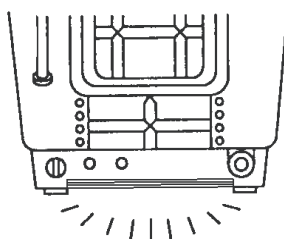
- The place where it would be exposed to direct sunlight.
- The place nearby a heater or heat appliance.
- The place where it would be supposed to be frozen in winter.
- The kitchen with coal gas and a damp place like a bathroom.

#### Installation Of the COVER UNDER (Noise Insulation Plate)

- 1** The packing box opened, there is a noise insulation plate at the bottom of the back



- 2** Push the noise insulation plate into the end, which decrease the noise made by this washer.

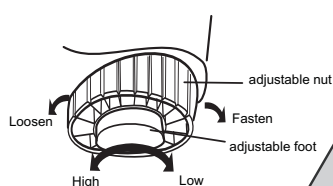


\* The drawing of the COVER UNDER is variant from your model

#### How To Install On An Inclined Place

##### 1 Horizon Setting

After controlling the height by turning the adjustable leg, let the washer put down to the ground.



##### 2 Check the Horizon Status

Check the position of tub above the center of the washer.



#### NOTES

The openings must not be obstructed by carpeting when the washing machine is installed on a carpeted floor.

## ■ HOW TO CONNECT THE INLET HOSE

1. Unscrewing the part “a” from the water faucet. ( As figure 1)

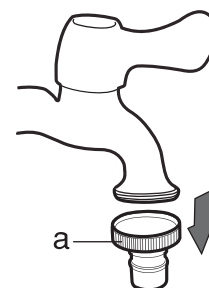


Figure 1

2. Respectively attach the water inlet hoses to the hot water faucet and the cold water faucet. ( As figure 2)

**NOTE:** Do not overtighten. Damage to the valves can result.

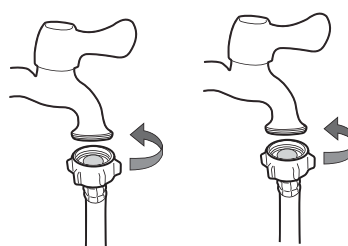


Figure 2

3. Run water through both faucets and inlet hoses, into a bucket or laundry tub, to get rid of particles in the water lines that might clog the inlet valves screens.
4. Attach the hose connected with hot water faucet to the HOT water inlet valve. Attach the hose connected with cold water faucet to the COLD water valve. ( As figure 3)

**NOTE:** Do not overtighten. Damage to the valves can result.

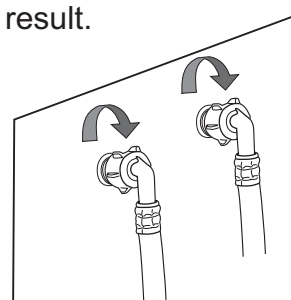


Figure 3

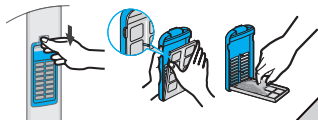
5. Check for leaks

- (1). Swing the water inlet hose gently to confirm if it's suitable.
- (2). Turn on the water faucets and check for leaks. A small amount of water might enter the washers. You will drain this later.

## HOW TO CLEAN

### • • • CLEANING THE LINT FILTER

- 1 Pull the Filter frame downward then open the lint filter.



- 2 Wash the lint off with water.



- 3 Return the filter as it was, and insert the filter frame into the slot.

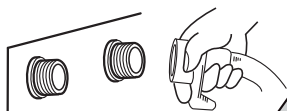


### • • • CLEANING THE WATER INLET FILTER

- Clean the filter when water leaks from the water inlet.

- 1 Pull the power plug out before cleaning it.

- 2 Turn off the water supply to the washer and separate the inlet hose.



- 3 Remove the dirt from the inlet filter with a brush.



### • • • CLEANING THE DETERGENT BOX

- 1 pull the detergent box up slantingly and gently.

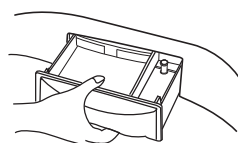


Dismantle



- 2 Clean the detergent box with water after dismantling it

- 3 put the detergent box down slantingly and then push in.



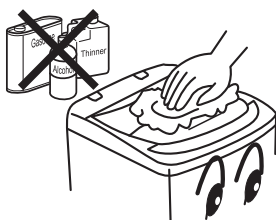
Install



### • • • CLEANING THE CABINET

If the cabinet is dirty, wipe it with wet cloth

- Do not flush it directly with water.
- Wipe it with neutral detergent.
- Do not wipe it with thinner, petrol, alcohol etc.



## 4. FEATURE AND TECHNICAL EXPLANATION

### FEATURE OF THE WASHING MACHINE

- The first applying Radical Technology in the world....go beyond washing, sterilize your clothes and deodorize a bad smell.
- Quiet washing through the innovational low-noise design.
- The adoption of the water currents to adjust the unbalanced load.
- Transparency display window.
- Magic filter.

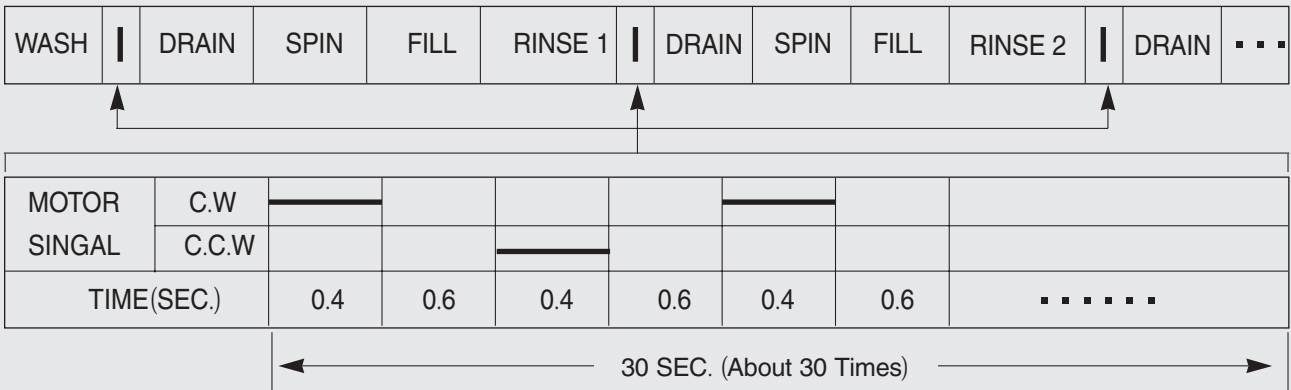
### WATER CURRENT TO ADJUST THE UNBALANCED LOAD

It is a function to prevent eccentricity of the clothes after wash by rotating pulsator C.W and C.C.W for 30 seconds.(except for the course "soft".)

#### EFFECT

It reduces vibration and noise effectively while spinning.

#### WATER FLOW

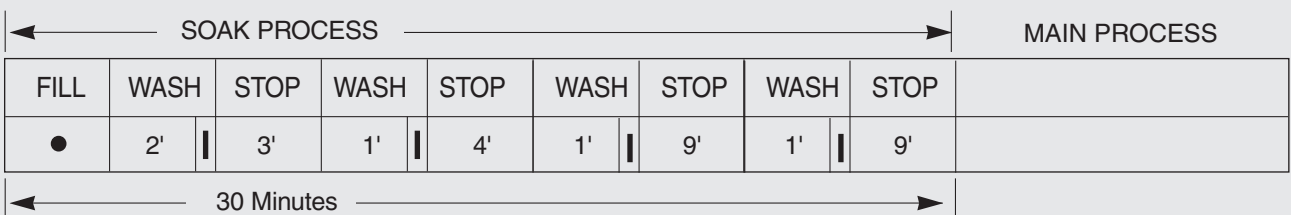


### FUNCTION FOR SOAK WASH

#### DISPLAY THE RESIDUAL TIME

When the SOAK WASH is selected, the total wash time increases because 20 minutes( "normal" course) or 30 minutes("jeans" and "heavy" course) for soak process are added to the time of main process.

#### PROGRESS



#### NOTES

"|" mark indicates the operation of the water currents to adjust the unbalanced load.

### AUTOMATIC WATER SUPPLY SYSTEM FOR WASH

The water level would be lowered because the washings absorbs water at the beginning of washing. Therefore, after some secs, the operation is interrupted to check the water level, and then the water is supplied again until the selected water level is reached.

## AUTOMATIC DRAINING TIME ADJUSTMENT

This system adjusts the draining time automatically according to the draining condition.

Draining condition	Good draining	The washer begins spin process after drainage.
	Bad draining	Draininig time is prolonged.
	No draining	Program is stopped and gives the alarm.

### FUNCTIONAL PRINCIPLE

The micom can remember the time from the begining of drain to reset point when the pressure switch reaches to "OFF" point

Drain Time	Movement of the Program
Less than 4 minutes	Continue draining
More than 4 minutes	Program stops and gives the alarm with <b>E1</b> blinked on display lamp.

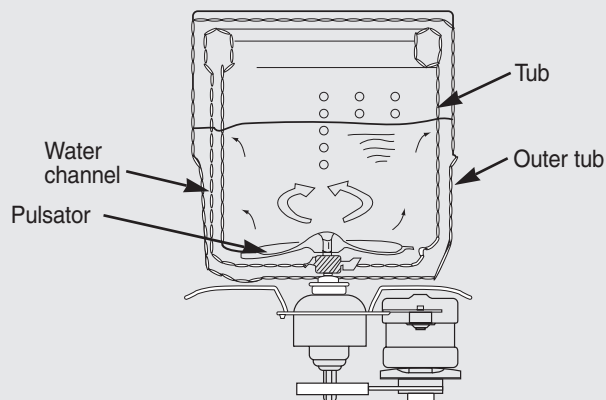
## CIRCULATING-WATER COURSE AND LINT FILTER

### CIRCULATING-WATER

The washing and rinsing effects have been improved by adopting the water system in which water in the tub is circulated in a designed pattern.

When the pulsator rotates during the washing or rinsing process, the water below the pulsator fans creates a water currents as shown in figure.

The water is then discharged from the upper part of the tub through the water channel. About 40 L/min. water is circulated at the "8" water level, standard wash load and standard water currents.



## RESIDUAL TIME DISPLAY

When the START/PAUSE button is pressed, the residual time (min.) is displayed on the time indicator, and it will be counted down according to process.

When operation is finished, the TIME INDICATOR will light up **E1**.



## 5. DIRECTIONS FOR DISASSEMBLY AND ADJUSTMENT

### Warning

BEFORE ATTEMPTING TO SERVICE OR ADJUST ANY PART OF THE WASHING MACHINE, DISCONNECT THE POWER CORD FROM THE ELECTRIC OUTLET.

### KEY POINTS IN DISASSEMBLY

#### 1) GENERAL ATTENTION

- Be sure to pull off the power plug in disassembly or maintenance.
- Use stipulated crimp terminals in connecting the wires between the conducting wires as far as possible, and fix with suitable tools, and insulate with insulation tape completely.
- In inserting the conducting wires, be sure to plug the pins to the root and make it hard to be pulled out.
- If welding is needed, be careful not to touch the plastic or other insulation parts with the iron.
- When connecting the wires, be sure not to make the wire touch the mobile parts like the belt, radiating pulley and jib etc., and the sharp protruding parts and the parts with high temperature (motor). Connect and fix the wires as per their original mode.
- If there's metal object at the wire fixing point, be sure to insulate with insulation materials. Take care of the screws in order to use them in installation.

#### 2) POINTS OF ATTENTION IN USAGE OF ELECTRIC COMPONENTS

- In case that the power is on, the earthing circuit of the computer sequencer can have a high voltage to earth. Take care not to get electric shock.
- Store the computer sequencer at shading and dry places. Avoid direct sunlight.

### METHOD OF DISASSEMBLING THE CONTROL PANEL

1. Open the back cover. Loosen the inner wiring.



2. Loosen the screws used to install the control panel seat (rear and side). Lift the rear upwards. Loosen the control panel seat from the inlay of the cabinet. Then move it forwards several times.



3. Turn the control panel seat backwards to open it gently. Do not open by force.



#### ATTENTION:

- Do not lift the control panel seat by force, otherwise the safety switch control rod may get transformed, and the jointer part of the connecting pipe of the water level sensor may be loosened, therefore influence the normal operation of the microswitch and water level sensor.
- After opening the control panel seat, hold it with one hand or lean it on supporter like the wall. Do not put it down.

#### POINTS OF ATTENTION IN ASSEMBLY

- Fix the wiring in the control panel seat to its original position. Do not make it touch sharp corner and mobile position. The space surrounding the computer sequencer is rather narrow. Please dispose it carefully and do not make the transformer press the wires.
- Confirm that the control panel seat is installed to proper position of the Cabinet.

## GEAR MECHANISM ASS'Y REPLACEMENT

- 1 Raise the control panel seat on the outer cabinet.
- 2 Loosen four screws mounting outer tub cover and remove outer tub cover from the tub ass's.



- 3 Loosen the pulsator mounting screw and remove the pulsator.



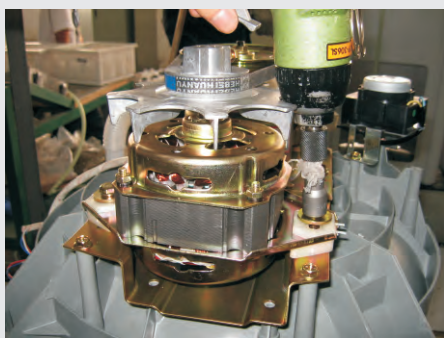
- 4 Remove the four screws by screw drive.



- 5 Remove the tub ass'y.



- 6 Lay the front of the washing machine on the floor.
- 7 Remove four screws then remove gear protect.
- 8 Remove the V-belt.
- 9 Remove 2 special bolts of motor, then remove motor.



- 10 Remove several special bolts of gear mechanism ass'y by using a box wrench.



- 11 Pull out the gear mechanism ass'y.





## DRAIN MOTOR AND VALVE REPLACEMENT

(NON PUMP MODEL)

- 1 Lay the front of the washer on the floor.
- 2 Loosen two special screw of drain motor.



- 3 Take out the wire of drain motor from the bracket.
- 4 Separate the drain motor from the base.



- 5 Turn the valve by using screw driver as shown in picture.



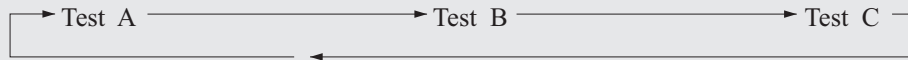
- 6 Remove the valve lid from the valve drain ass'y.



## 6. TROUBLE SHOOTING GUIDE

### TEST PROGRAM (TEST WITHOUT WATER)

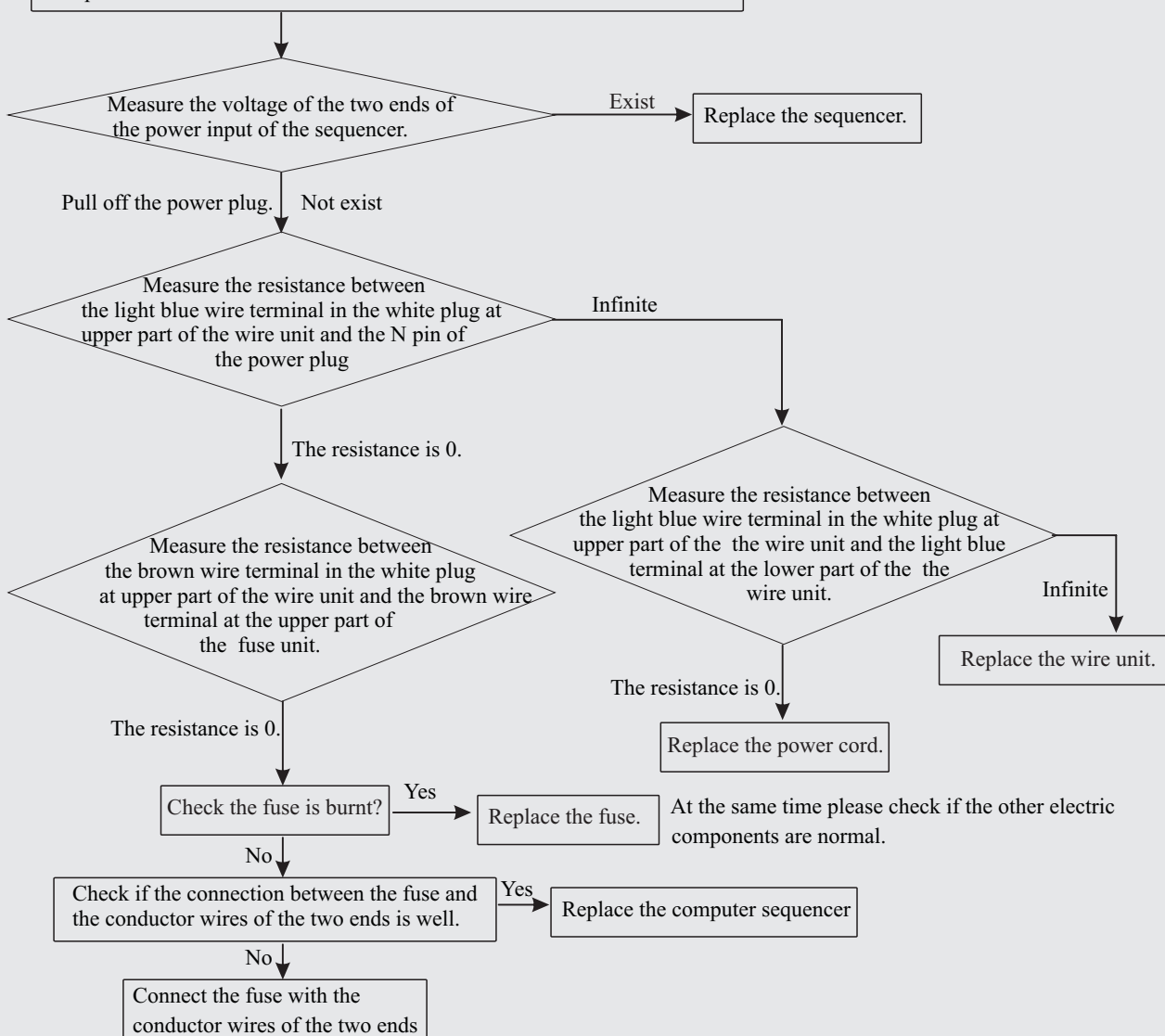
Push and hold the "program" and "process" buttons, then push down the "power" button to enter test program. Push the "wash", The program will switch as follow:



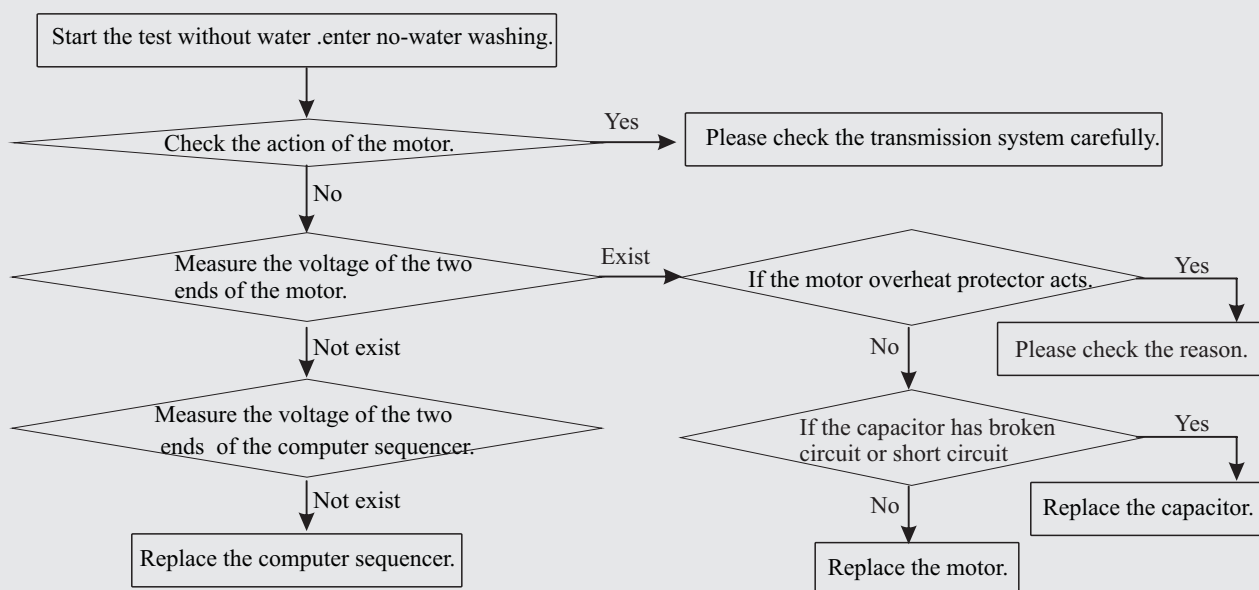
Test name	Test content
Test A	The numeral tube shows "C1", all of the indicators are on. After 3 seconds the numeral tube shows "88" and the indicators flash 3 times as 1Hz. At the same time the buzzer rings 3 times (once per second). The power is switched off automatically after finishing.
Test B	The numeral tube shows "C2", the indicators of the water level "5", "wash" and "normal" are on. After 3 seconds the numeral tube shows "20", and the indicator "wash" flashes. The washer perform the corresponding current for 20 minutes. The power is switched off automatically after finishing. (during running, you can change the current selection)
Test C	The numeral tube shows "C3", the indicators of "spin" and "normal" are on. After 3 seconds the numeral tube shows "5", and the indicator "spin" flashes. The washer spins 5 minutes. Then the power is switched off automatically after finishing.

### CONCERNING NO ACTION (THE INDICATOR IS OFF)

Confirm that there's no power failure, and the power plug is inserted reliably. The power switch is at "On" mode.

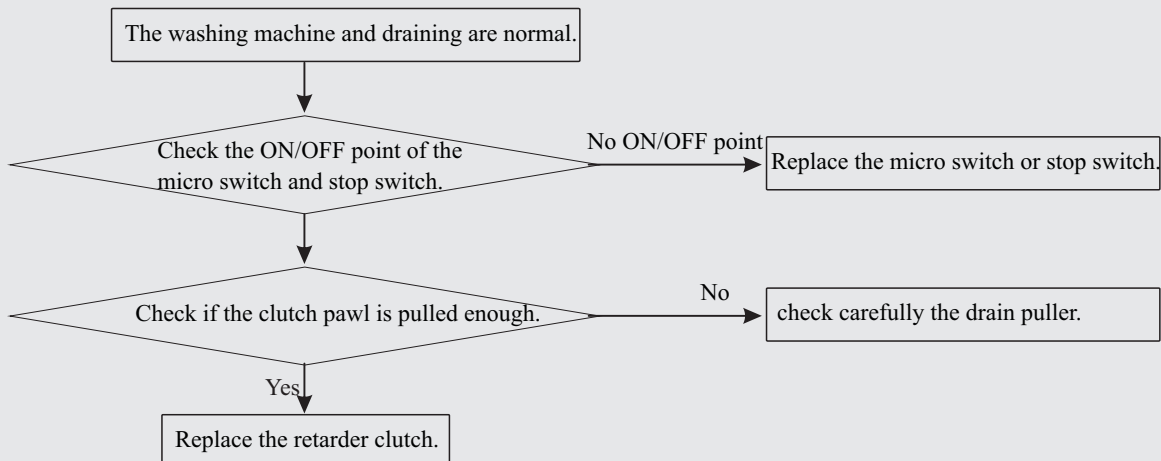


## CONCERNING NO ROTATION IN WASHING

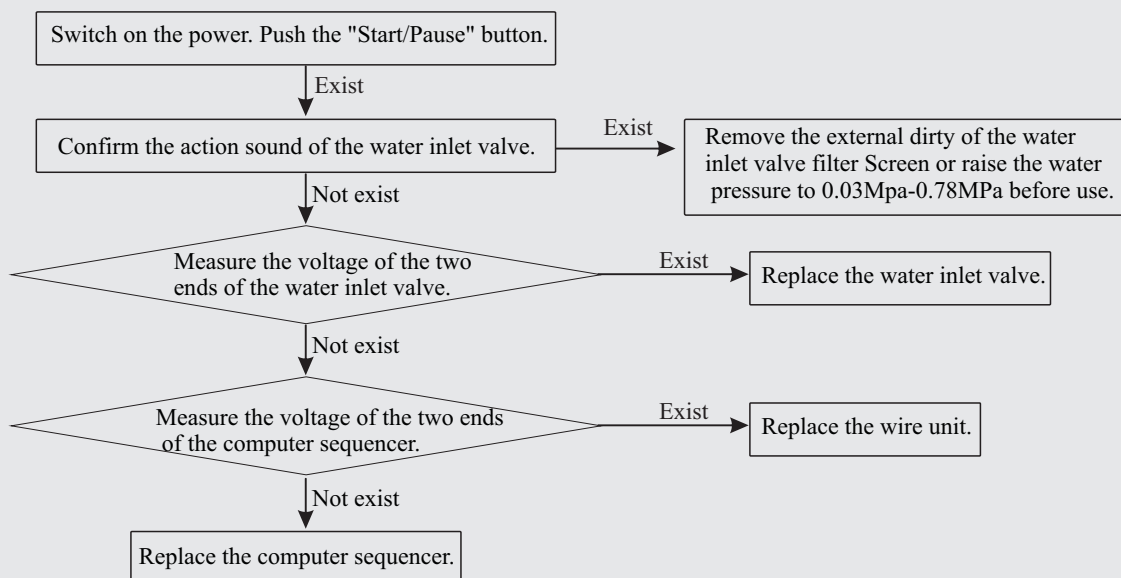


At this time please check if the water inlet valve works normally.

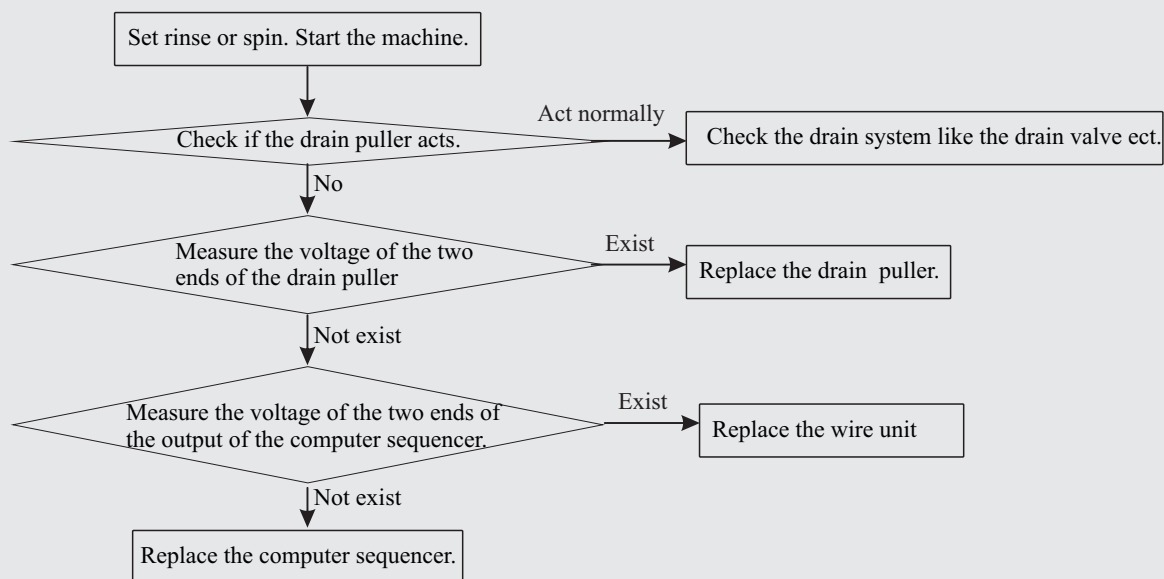
## CONCERNING NO SPINNING



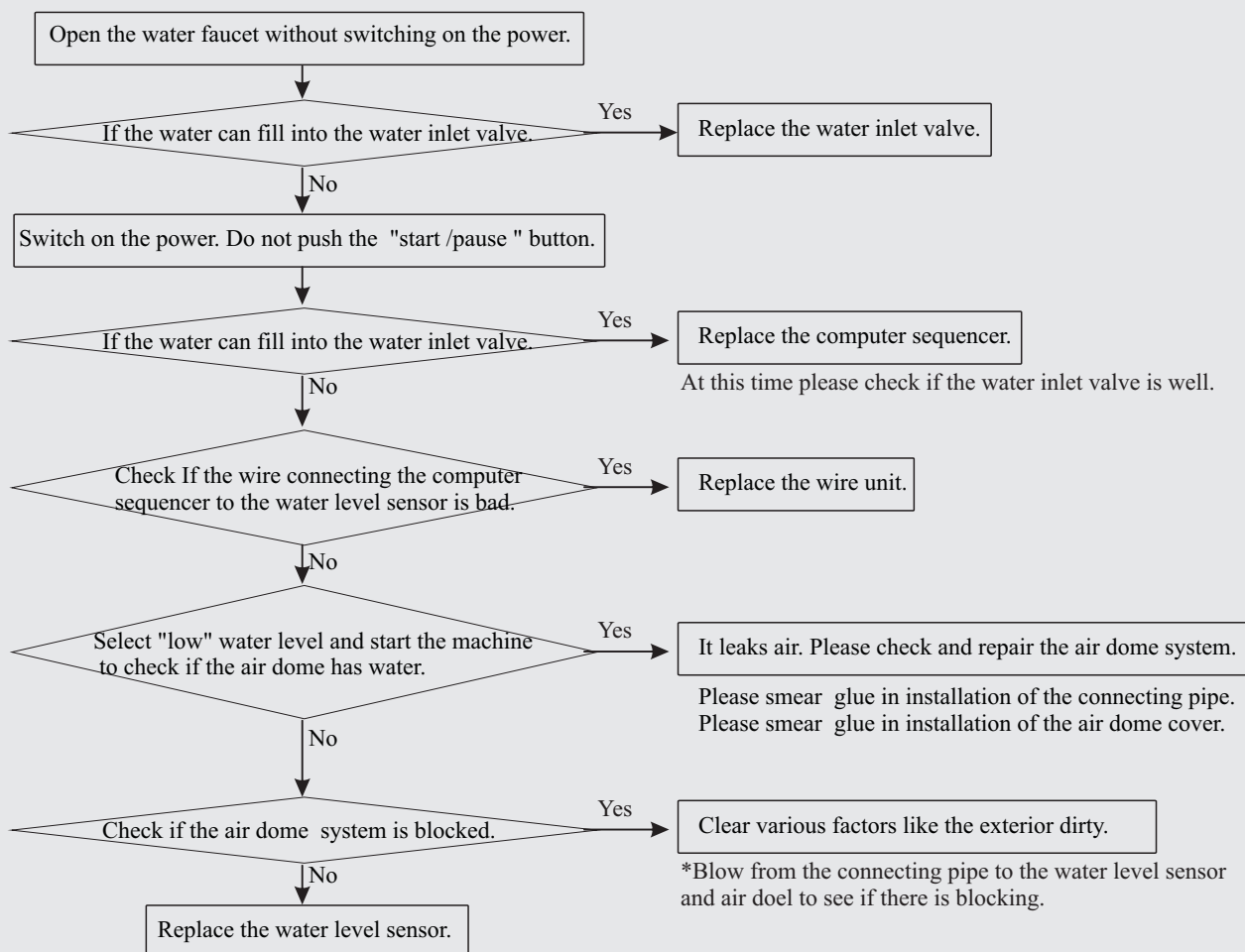
## CONCERNING NO WATER FILLING



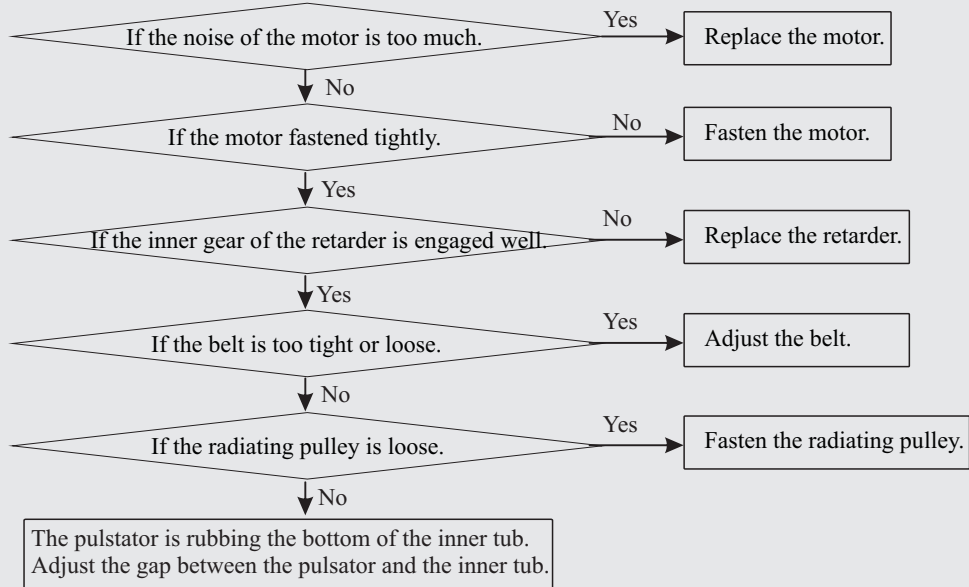
## CONCERNING NO DRAINING



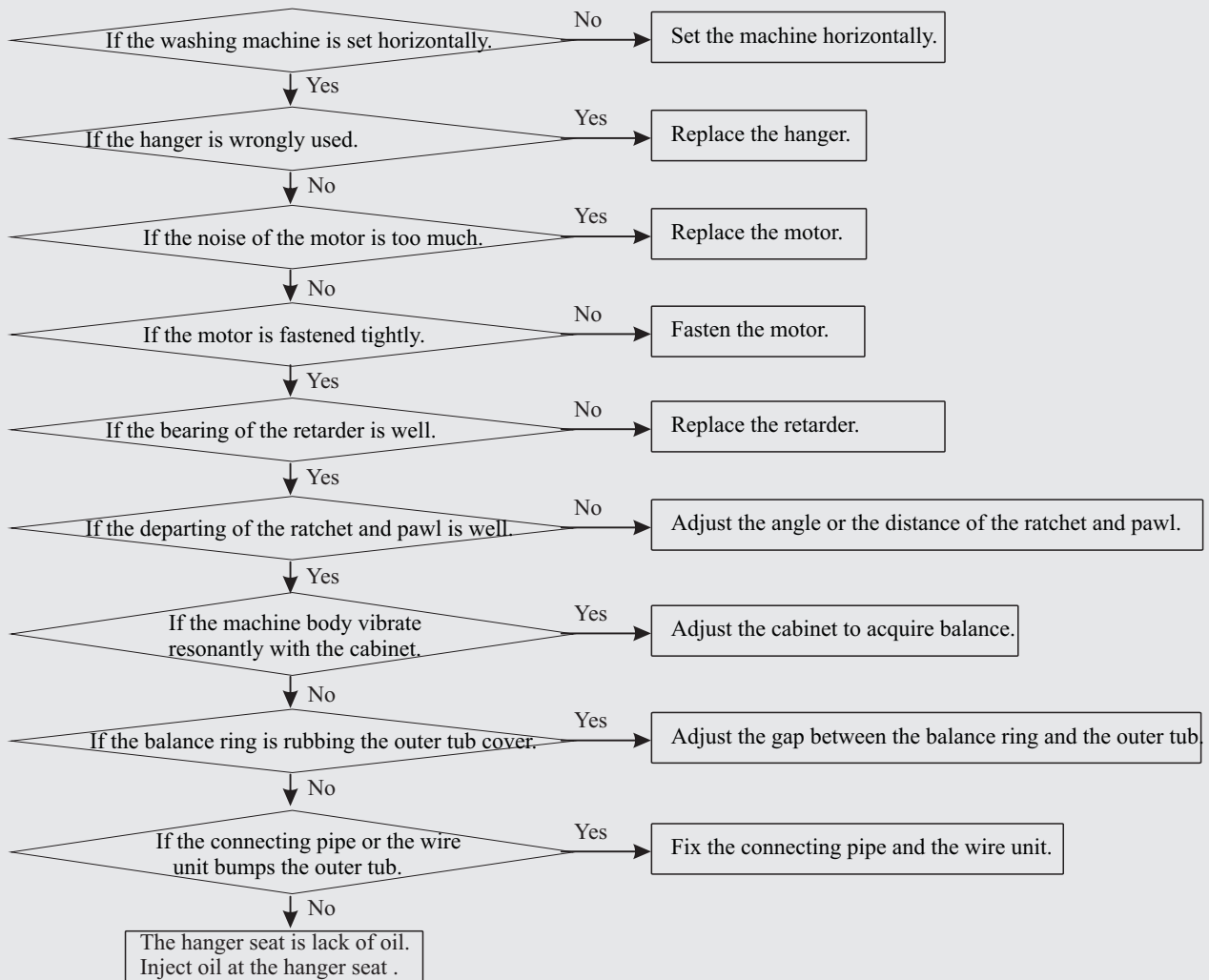
## CONCERNING KEEP FILLING WATER



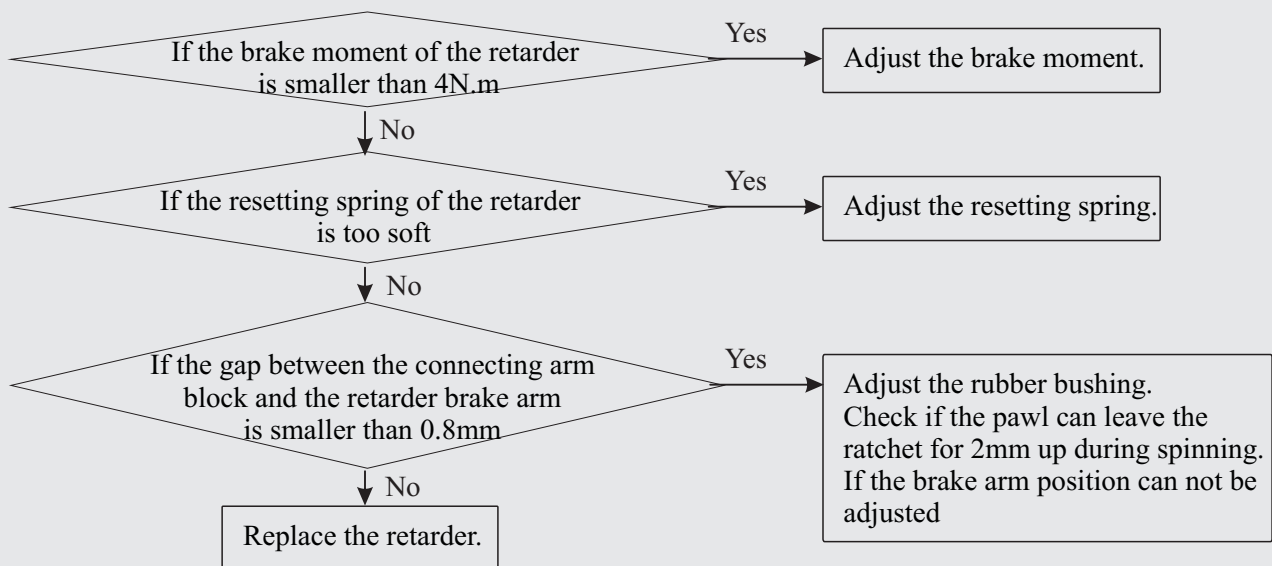
## CONCERNING TOO MUCH NOISE IN WASHING



## CONCERNING TOO MUCH NOISE IN SPINNING



## CONCERNING TIME-OUT IN BRAKE





## TROUBLE-SHOOTING TABLE

Phenomenan	The reason	How to settle
The draining does not work, or the speed of draining is too slow ,The numeral tube shows “E1”	<ul style="list-style-type: none"> <li>● Is the drain hose put down?</li> <li>● Is the drain hose blocked by foreign material?</li> </ul>	<ul style="list-style-type: none"> <li>● Put down the drain hose.</li> <li>● Open and close the top lid once.</li> </ul>
The machine stops running In spinning. The numeral tube shows “E2”	The top lid is not closed.	Close the top lid.
The safety switch acts. The spinning can not work (after amending twice automatically) The numeral tube shows “E3”	<ul style="list-style-type: none"> <li>● Are the laundries put slantingly?</li> <li>● Is the machine slanting?</li> </ul>	<ul style="list-style-type: none"> <li>● Re-order the laundries. Close the top lid.</li> <li>● Level the machine in right position. Open and close the top lid once.</li> </ul>
Not supplying water or the speed is too slow (the suitable water level doesn't research about 16 minutes. The numeral tube shows “E4”	<ul style="list-style-type: none"> <li>● The water faucet is not open or supplying water is stoped.</li> <li>● The water inlet valve is blocked.</li> </ul>	<ul style="list-style-type: none"> <li>● Open the water faucet. Push the "Start/Pause" button.</li> <li>● Clean the water inlet valve . Push the "Start/Pause" button.</li> </ul>
In pre-wash , the washer stops running, the numeral tube shows “E5”	The top lid is not closed.	Close the top lid.
The numeral tube shows “E6”	Does the water level sensor contact badly?	Please contact with after-service center
The washer keeps filling water or drains automatically.the numeral tube shows “E7”	Does the water level sensor, inlet valve or computer sequencer bad?	Please contact with after-service center
The numeral tube shows “E8”	Does the temperature sensor bad?	Please contact with after-service center
The machine does not act. (Indicators are off.)	<ul style="list-style-type: none"> <li>● Is the power off?</li> <li>● Does the power cord loose?</li> </ul>	<ul style="list-style-type: none"> <li>● Use it when the power is on.</li> <li>● Insert the power plug tightly.</li> </ul>
There's abnormal sound inside the machine.	<ul style="list-style-type: none"> <li>● Is the machine slanting?</li> <li>● Is some metal inside the washer?</li> <li>● Are the laundries slanting in spinning?</li> </ul>	<ul style="list-style-type: none"> <li>● Level the machine properly.</li> <li>● Fasten the fastener or zip up the zip.</li> <li>● Re-order the laundries.</li> </ul>
The water faucet leaks.	Is the jointer screw of the water inlet hose loose or twisted awry?	Fasten the jointer screw properly.

## 7.USAGE OF THE OPERATION BUTTONS

### Indicator mode and meaning

- The indicator is off, indicating that the program or mode is not selected
- :○: The indicator is flashing, indicating the running program
- The indicator is on, indicating the program or mode selected and about to run

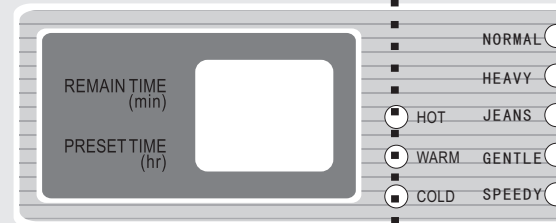
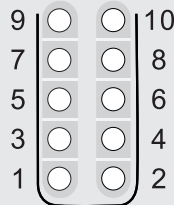
### Digital tube

- During operating of program, it displays the remained time (minute)
- During the preset program, it displays the remained reserve time (hour)
- In abnormal cases, it displays the symbol of the abnormal phenomenon

### "Water temp" button

- Push the button once you can select "cold water", "warm water" or "hot water" mode.
- The "warm water" temperature is presetted about 35 degree and the "hot water" temperature is presetted about 45 degree.

7.0Kg



### "Water level" button

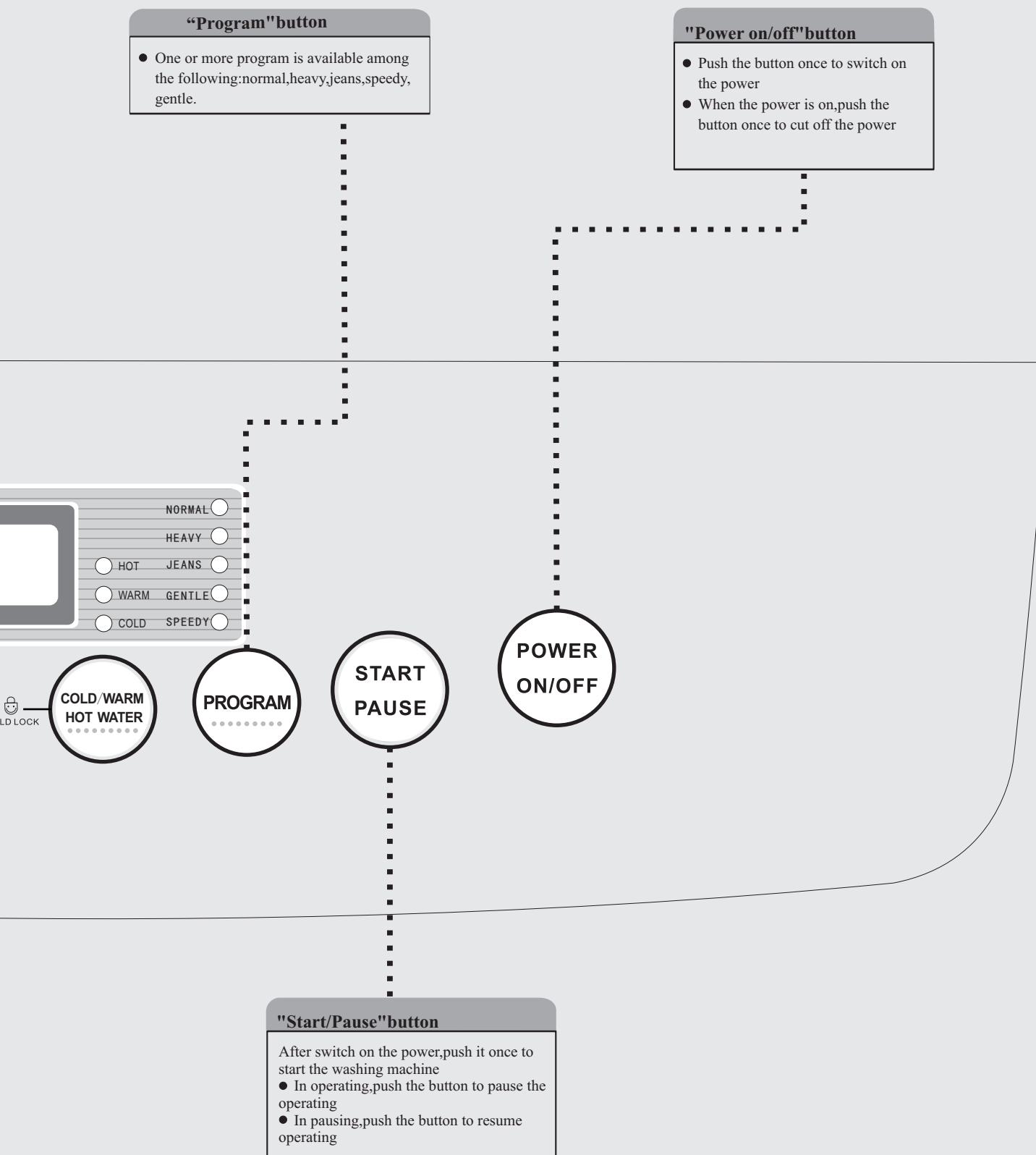
- Select suitable water level according to the quantity of the laundries
- When select "speedy", water level can't be selected.
- A long press on this button will re-supply the water till let hand go or the water level reaches the warning level.

### "Process" button

- Press this button can select one of the process "soak", "wash", "rinse" or "spin".
- When select "speedy", Washer sets its own program "wash", "rinse" or "spin". Customer can't select.

### "Preset" button

- Push the button to select the finish time in the range between 2~24 hours
- After the preset function is enabled, the "preset" and "remained time" indicators are on, the decimal point flashes, the other indicators are off
- After the preset function is enabled, push the "preset" button, the "preset" state can be shown.



## Description:

- 1.Push the power on/off button to switch on the power.If the washing machine is idle for 5 minutes,it will switch off the power automatically.
- 2.In using, first push the power on/off button, then select program. After selection, push the start/pause button to start washing.