

SERVICE MANUAL

FOR ELECTRIC OVENS



OBES61



OBES62



OBES63

MODELS:

OBES61
OBES62
OBES63

 everdure
DESIGNED TO PERFECTION

EVERDURE BUILT IN ELECTRIC OVENS			
CATEGORY	SEE	SECTION/COMPONENT	PROBLEM(S)
Electrical	1	Fan	Fan not working/noisy/ hitting its cover
Electrical	2	Signal Lamp	Signal lamp not working / blinking
Electrical	3	Timer	Digital Timer not working/Timer buttons sticking
Electrical	3	Timer	Timer circuit stays open / closed
Electrical	4	Oven Light	Oven light not turning on/off
Electrical	4	Oven Light	Oven light button not working
Mechanical	5	Hinge	Oven/Hob Hinge noisy
Mechanical	5	Knobs	Knob stays locked/broken/loose/knob gasket loose
Electrical	6	Cooking	Unhomogenous cooking/ Long cooking period
Electrical	6	Cooking	Appliance doesnt work at all
Electrical	7	Oven Electrical Heating	Top/Bottom/Grill Heating Element not working
Electrical	7	Oven Ele. Heating Elements	Ring (Circular) Heating Element not working
Mechanical	SEE:	Handle	Oven door handle loose/broken
Transport	SEE:	Side panels (built-in cooker)	Damaged (how to change)
Mechanical	SEE:	Wire& Catalytic Shelves	Damaged (how to change)
Transport	SEE:	Oven door	Damaged (how to change)
Transport	SEE:	Front Panel	Damaged (how to change)
Transport	SEE:	Rear panel	Damaged (how to change)

OBES63 FAULT CODES

ERROR CODE	ERROR DESCRIPTION	POSSIBLE CAUSE	POSSIBLE SOLUTION
Err1 (failure 1)	Open circuit on the oven temperature sensor (thermostat)	Thermostat cable maybe loose	If cables are loose, check & correct wiring
		Thermostat may be damaged	Change the thermostat cable if it is damaged
		Thermostat contacts may be damaged	Change the thermostat
Err2 (failure 2)	Open circuit on the oven temperature sensor (thermostat)	Thermostat cable may be loose/ damaged	If cables are loose, check & correct wiring
		Thermostat cable may be loose/ damaged	Change the thermostat cable if it is damaged
		Thermostat contacts may be damaged	Change the thermostat
Err3 (failure 3)	Mode selector short/open circuit	Mode selector cable may be loose / damaged	If cables are loose, check & correct wiring
			Replace the mode selector cable if it is damaged
			Change the mode selector if the above solutions did not

TEST MODE

To enter test mode follow the below steps;

Turn oven off at the electrical outlet

Press temperature buttons "PLUS" (+) & "MINUS" (-) together

Turn on oven at the electrical outlet while keeping the temperature + & - buttons depressed

The oven is in test mode when "**tEst**" is displayed in the temperature display & "**Edxx**" is displayed in the clock display

Each button has another function, from left to right;

1. RING heater & COOLING FAN is switched on & measured cavity temperature is displayed
2. Oven LIGHT is switched on
3. No functions set
4. FAN is switched on & all SYMBOLS are on
5. All 7 SEGMENT DIGITS are on
6. BUZZER is switched on
7. Leave test mode

CHANGING THE BUZZER SIGNAL

There are 3 different signals to choose from

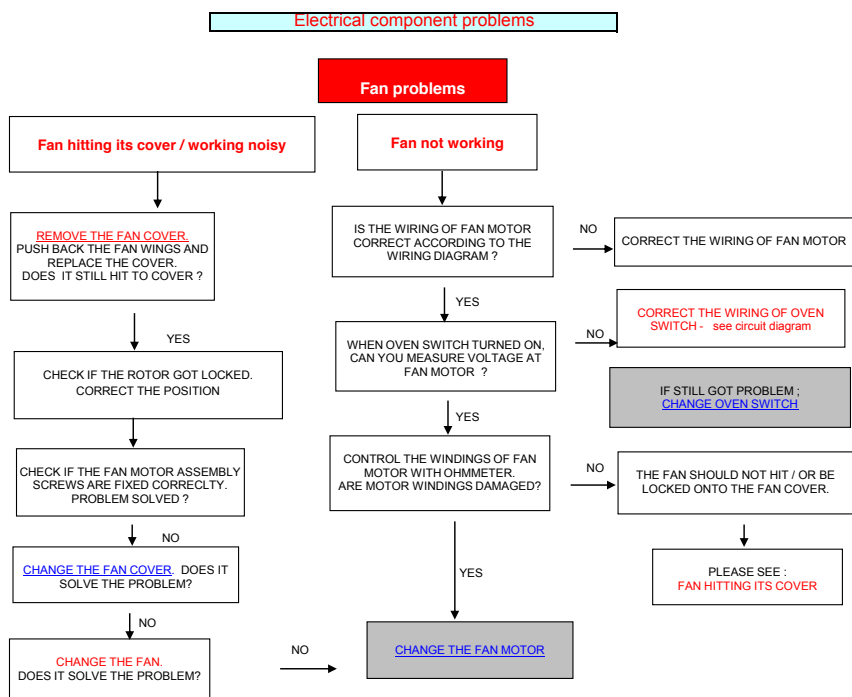
Keep pressed (-) MINUS for a second & you will hear a signal

When pressed repeatedly, the signal frequency will change

DISPLAYING MAINS FREQUENCY

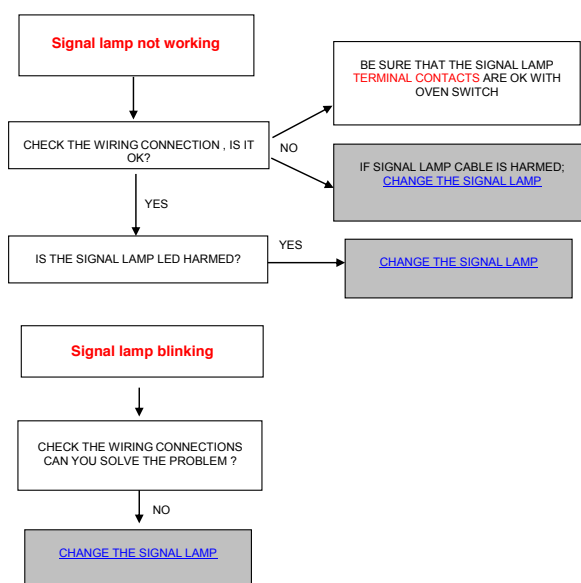
Press (+) PLUS button & the mains frequency is displayed in the clock display

TROUBLE SHOOTING



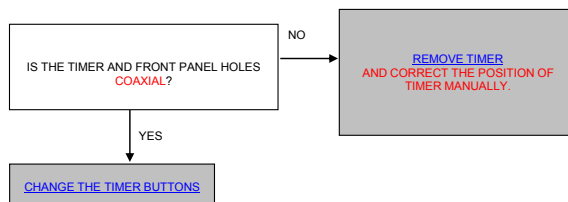
Electrical component problems

Signal lamp problems :

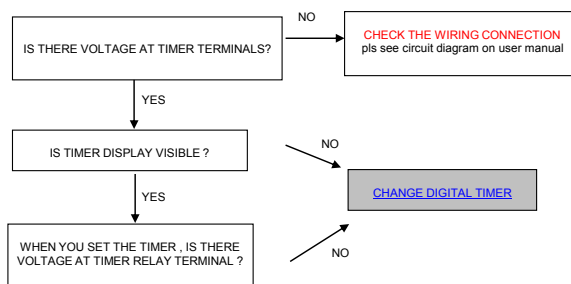


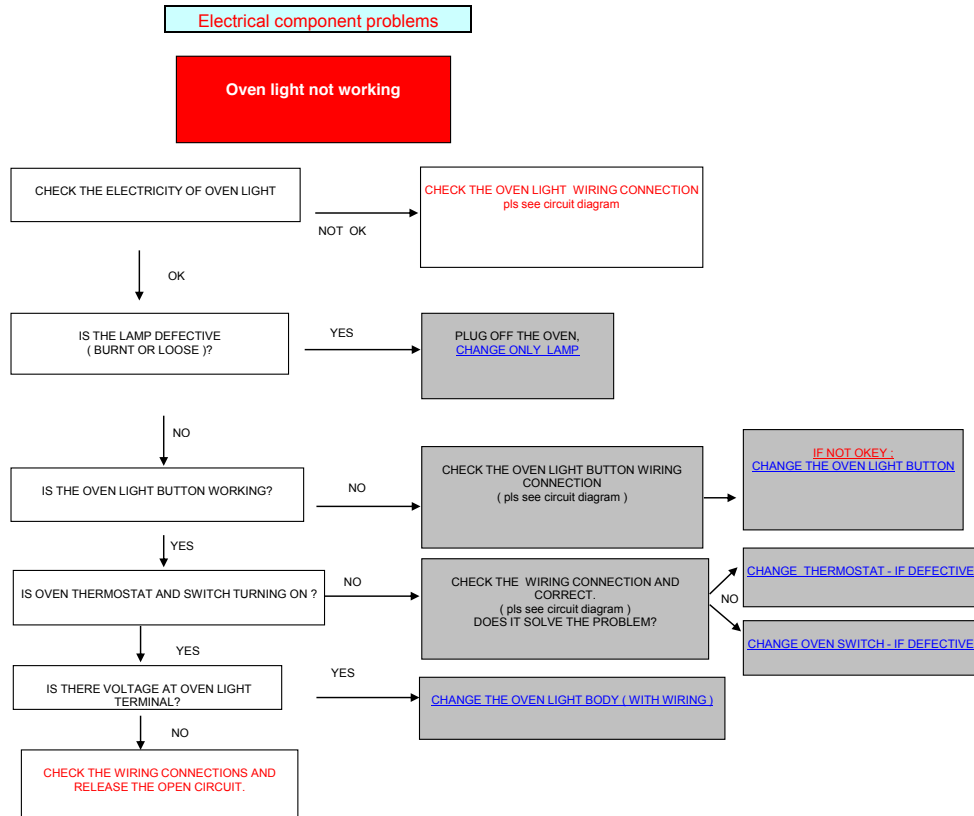
Electrical component problems

Digital timer buttons sticking



Digital timer not working





Mechanical component problems : Hinges & Knobs

HINGE PROBLEMS

Glass lid angle less than 90° / more than 100°



IS THE LID HINGE COUNTERPART FIXED ?



NO

FIX THE HINGE COUNTERPART.
IS IT STILL LESS 90° / MORE THAN 100° ?



Oven door hinge noisy



CHANGE OVEN DOOR HINGE

KNOB PROBLEMS

KNOB LOOSE



IF THE SPIRAL KNOB SPRING IS REMOVED,
ASSEMBLE A NEW KNOB RING.



IF KNOB SPRING IS AVAILABLE,
CHANGE THE KNOB.

KNOB GASKET GETTING OUT OF ITS
PLACE

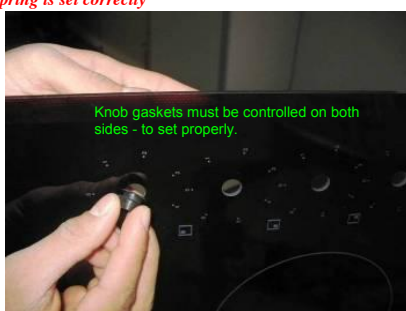


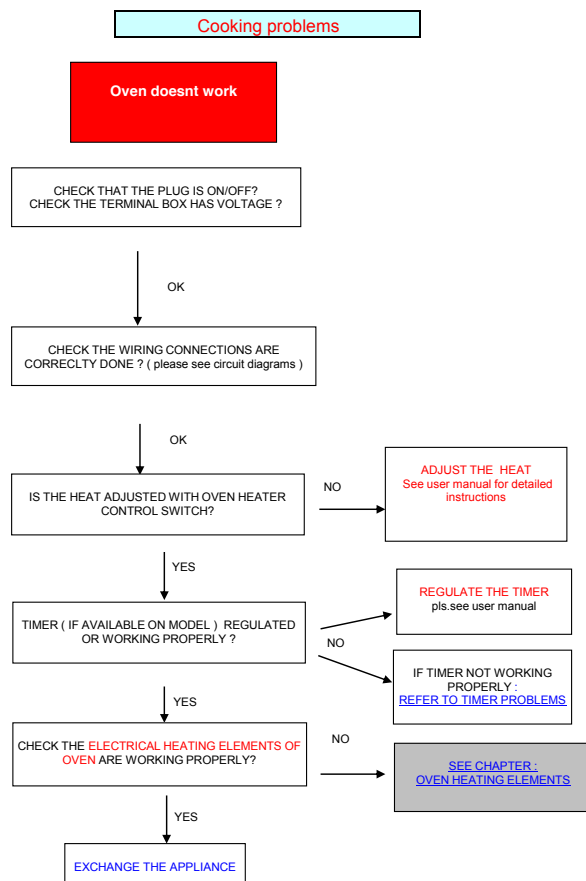
REPLACE GASKET.
(KNOB GASKETS MUST BE SET PROPERLY ON
BOTH SIDES)

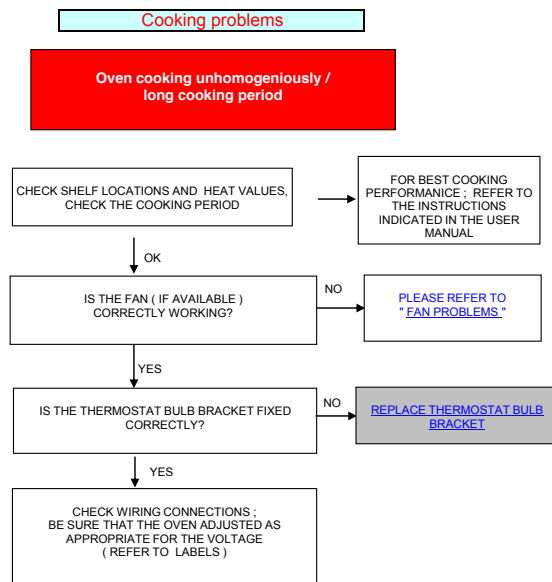


IF NOT OKEY ;
CHANGE THE KNOB GASKET

Before putting on the knob ; be sure the knob segment and knob spring is set correctly

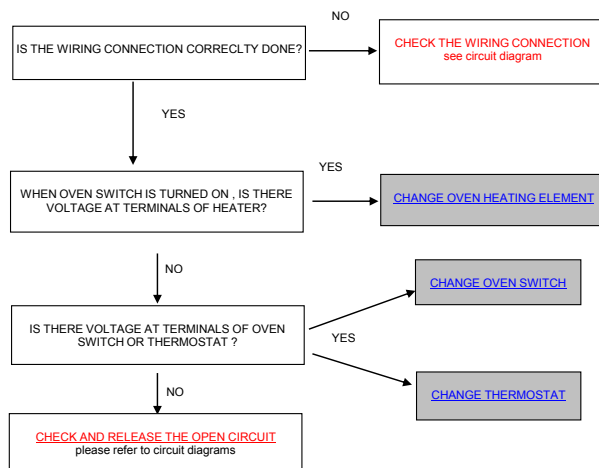






Electrical component problems

**Oven Electrical Heating Element(s) not working ;
(Top / Bottom / Ring / Grill Heaters)**



OBES63 FAULT CODES

ERROR CODE	ERROR DESCRIPTION	POSSIBLE CAUSE	POSSIBLE SOLUTION
Err1 (failure 1)	Open circuit on the oven temperature sensor (thermostat)	Thermostat cable maybe loose	If cables are loose, check & correct wiring
		Thermostat may be damaged	Change the thermostat cable if it is damaged
		Thermostat contacts may be damaged	Change the thermostat
Err2 (failure 2)	Open circuit on the oven temperature sensor (thermostat)	Thermostat cable may be loose/ damaged	If cables are loose, check & correct wiring
		Thermostat cable may be loose/ damaged	Change the thermostat cable if it is damaged
		Thermostat contacts may be damaged	Change the thermostat
Err3 (failure 3)	Mode selector short/open circuit	Mode selector cable may be loose / damaged	If cables are loose, check & correct wiring
			Replace the mode selector cable if it is damaged
			Change the mode selector if the above solutions did not help

TEST MODE

To enter test mode follow the below steps

Turn oven off at the electrical outlet

Press temperature buttons "PLUS" (+) & "MINUS" (-) together

Turn on oven at the electrical outlet while keeping the temperature + & - buttons depressed

The oven is in test mode when "tEST" is displayed in the temperature display & "Edxx" is displayed in the clock display

Each button has another function, from left to right;

1. RING heater & COOLING FAN is switched on & measured cavity temperature is displayed
2. Oven LIGHT is switched on
3. No functions set
4. FAN is switched on & all SYMBOLS are on
5. All 7 SEGMENT DIGITS are on
6. BUZZER is switched on
7. Leave test mode

CHANGING THE BUZZER SIGNAL

There are 3 different signals to choose from

Keep pressed (-) MINUS for a second & you will hear a signal

When pressed repeatedly, the signal frequency will change

DISPLAYING MAINS FREQUENCY

Press (+) PLUS button & the mains frequency is displayed in the clock display

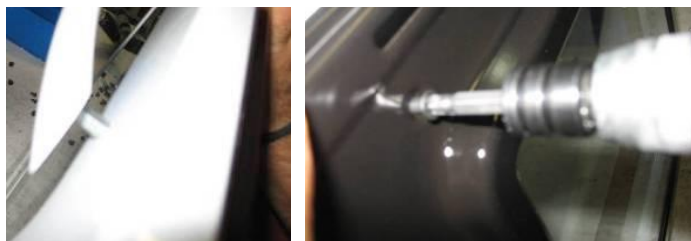
Handle Problems :

If handle is loose ; replace and tighten it. If not solving ; change with a new one



MODELS:

OBES61
OBES62
OBES63

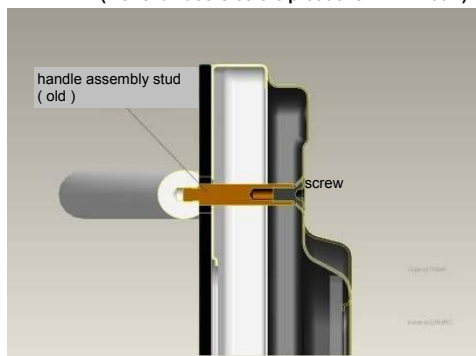


HANDLE ASSEMBLY TYPES :

3D SOLID TYPE OVEN DOOR HANDLE ASSEMBLY

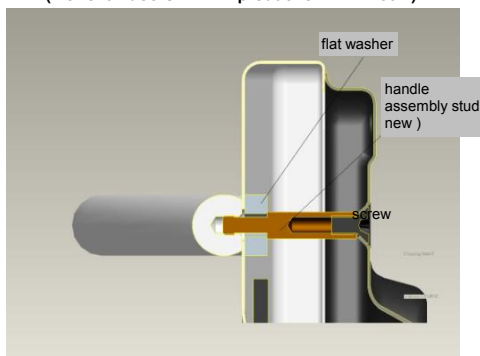
OLD VERSION

(For oven doors before production FEB. 2007)



LAST VERSION

(For oven doors AFTER production FEB. 2007)



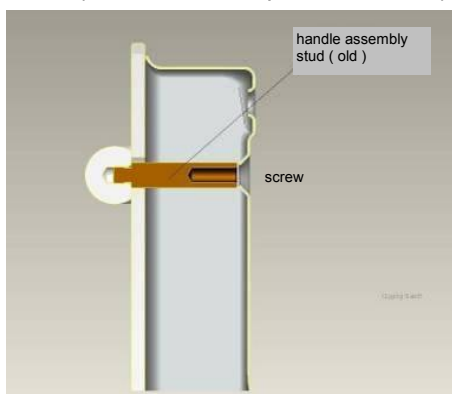
For old version handles ; Handle assembly Group = (Old Handle assembly stud + screw)

For new version handles ; Handle assembly Group = (New Handle assembly stud + flat washer + screw)

SOLID TYPE OVEN DOOR HANDLE ASSEMBLY

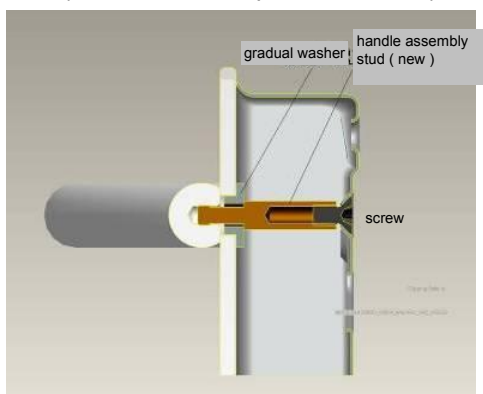
OLD VERSION

(For oven doors before production FEB. 2007)



LAST VERSION

(For oven doors AFTER production FEB. 2007)



For old version handles ; Handle assembly Group = (Old Handle assembly stud + screw)

For new version handles ; Handle assembly Group = (New Handle assembly stud + gradual washer + screw)

MODELS:

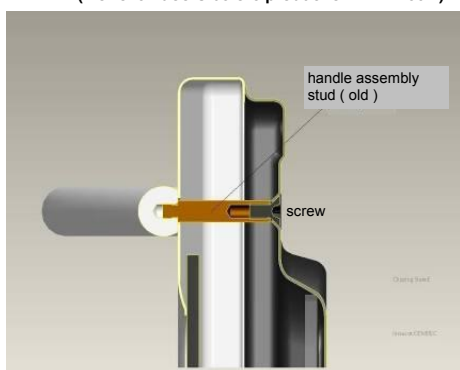
OBES61
OBES62
OBES63



INNER COVER OVEN DOOR HANDLE ASSEMBLY

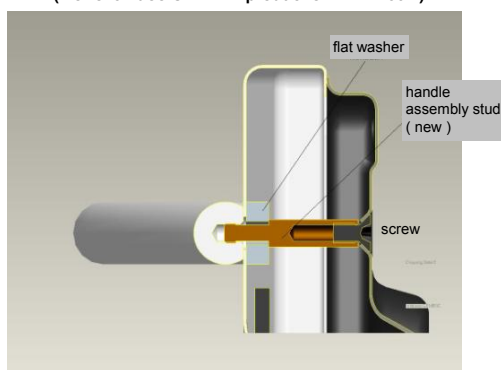
OLD VERSION

(For oven doors before production FEB. 2007)



LAST VERSION

(For oven doors AFTER production FEB. 2007)



MODELS:

OBES61
OBES62
OBES63

Changing oven door :

Unlock the oven door hinges first.

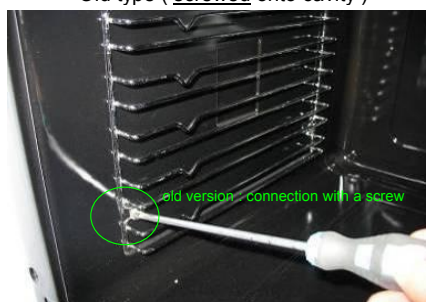


Then manually take off the oven door.

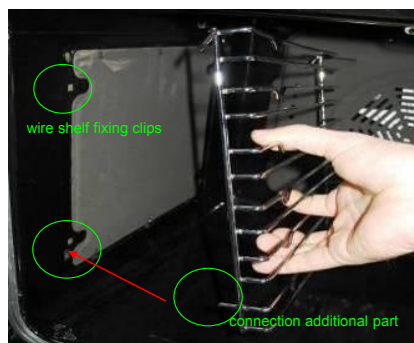


Wire shelves

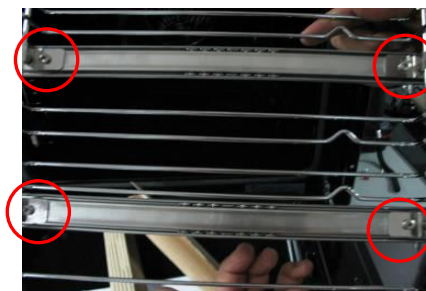
Old type (screwed onto cavity)



New type(Revision: March 2007) (set wire shelf into clips - manually)



To change telescopic rails , unscrew the connections on wire shelf.



MODELS:

OBES61
OBES62
OBES63

Changing side panels (Built-in oven)



Remove the screws between side panel and top panel. Then slightly hold up and remove the top panel



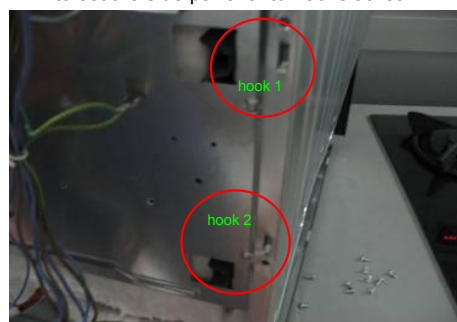
Remove back screws of side panel.



Remove all screws on the side panel and then pull off side panel



When reassembling the side panel, repeat this procedure backwards. And please pay attention to set the side panel onto hooks at rear.



MODELS:

OBES61
OBES62
OBES63

Removing rear panel

Detach all screws on rear panel to remove



If available, power cord terminals must be taken off from the rear panel

Removing front panel (built-in cookers)

Remove knobs manually



Remove the bottom screws of front panel



Hold up slightly and remove panel.



If available on your oven ;
Pull off the wiring connections of ignitor/oven light button.



MODELS:

OBES61
OBES62
OBES63

Changing the signal lamp body :

Pull off the signal lamp manually - to leave free from the panel



Remove the signal lamp body manually.

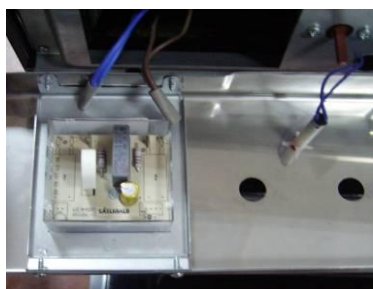


MODELS:

OBES61
OBES62
OBES63

Changing Digital Timer

Pull off the cable contacts from Digital timer



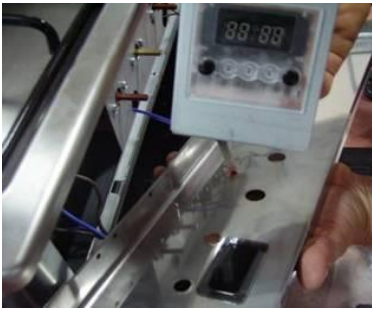
Unscrew the Digital timer – from the front panel



Correct the position of timer and check if problem solved.



If still not solved ; change the timer buttons.



If problem can not be solved; change digital timer.

MODELS:

OBES61
OBES62
OBES63

Changing Mechanical Timer

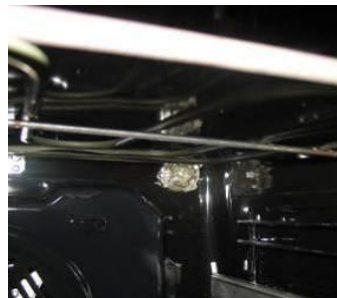
Unscrew the mechanical timer from the inner panel.



Changing oven light :

Before replacing the lamp, disconnect the appliance from the electricity supplies. Remove the glass protection cover by turning. Then pull back the lamp. If the oven lamp has to be changed the new lamp must have the following rating:

25W - 230Vac - 50 Hz - E14 - resistant to high temperatures (300°C)



Pull of the electrical connections of oven light

MODELS:

OBES61
OBES62
OBES63

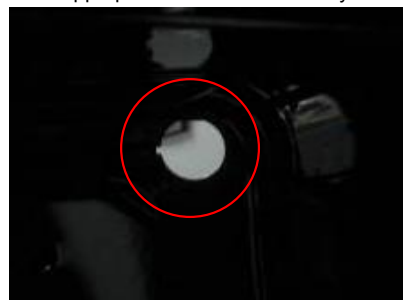
If harmed/defective, change the wiring harness



Press the hooks on the oven light (by a screwdriver) and then push into the cavity.



Pay attention that : the oven light is replaced appropriate to its hole on cavity



MODELS:

OBES61
OBES62
OBES63

Changing fan motor

Remove fan cover first.



Then pull back and remove fan :



Unscrew the fan motor from the rear inner panel



Remove the wiring harness of fan motor manually, then the fan motor will be free.

Changing Oven Electrical Heating Elements

1. Ring (circular) Heating Element :

Unscrew the ring heating element from the rear of cavity.



Pull out the wiring connections manually. The ring heater will be free then.

2. Top& Grill Heating Element :

Remove **Top heating element bulb bracket** manually (at middle)



Unscrew the top&grill heating element from the rear of cavity.



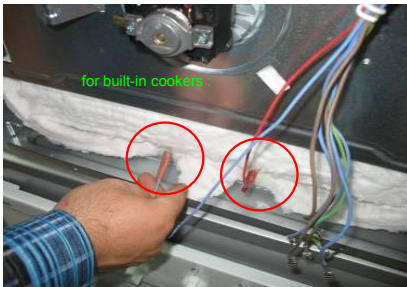
Pull out the wiring connections manually. The ring heater will be free then.

MODELS:

OBES61
OBES62
OBES63

3. Bottom Heating Element :

Pull off the terminals of bottom heating element.



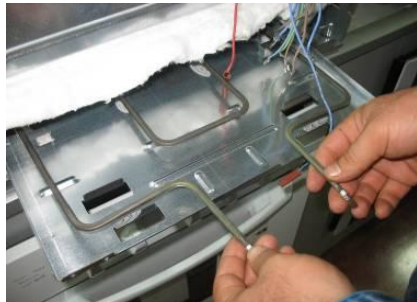
Take up the wrapping insulation (rockwool) slightly, then unscrew the right and left connections of bottom heating element.



Press down the bottom heating element cover, then pull slightly backwards.



Hold up the heating element slightly and take out.



Repeat this procedure backwards ; to replace the component.

MODELS:

OBES61
OBES62
OBES63