



<b>Document N.</b>	ALL-DF2004-02-02-Reading_Serial_Numbers_GB		
<b>Brand</b>	All		
<b>Models concerned</b>	All		
<b>Document description</b>	This document indicates where to find the various Smeg products data plates and how to interpret the serial number to determine the production date.		
<b>VERSIONE</b>	00	01/2004	First version: ALL-DF2004-02-00-Reading_Serial_Numbers_GB
	01	11/2013	Second version : ALL-DF2004-02-01-Reading_Serial_Numbers_GB
	02	05/2014	Third version : ALL-DF2004-02-02-Reading_Serial_Numbers_GB To improve some management procedures, it became necessary to introduce the Full Serial Number (20 characters), called FULL S/N on the identification label. Introduction Chapter 7 Full Serial Number.



## CONTENTS

1 POSITIONING .....	3
2 Reading the serial number of appliances produced by Smeg.....	5
2.1 Reading the OLD serial number of SMEG COOKING PRODUCTS AND CLADDED.....	5
2.2 Reading the OLD serial number of SMEG DISHWASHERS AND WASHING MACHINES .....	5
2.3 Reading the serial number for DISHWASHERS AND WASHING MACHINES PRODUCED BY SMEG, BRANDED APELL (e.g. APA6148N) .....	7
2.4 Reading the NEW unified serial number on Smeg cooking/washing products and cladded refrigerators. ....	7
3. READING THE BAR CODE ON THE PACKAGE STRIP .....	9
4. READING THE SERIAL NUMBER ON THE MARKETED APPLIANCES.....	10
4.1 COLD.....	10
4.1.1 Reading the serial number of refrigerators models e.g.: FC40 and related, CL140... ..	10
4.1.2 Reading the serial number of refrigerators produced by INDESIT COMPANY-MERLONI ELETTRDOMESTICI (e.g.: CR330, FR231A) .....	10
4.1.3 Reading the serial number of refrigerators models e.g: CR305-Smeg branded , FR230WA-W. Westinghouse branded) .....	11
4.1.4 Reading the serial number of refrigerators models e.g.:FC325...,FC375...FC395...,CV235...,CR320... ..	12
4.1.5 Reading the serial number of refrigerators models e.g.: CV100A, FC360A,WD430A, FD238B. ....	13
4.1.6 Reading the serial number of refrigerators models e.g.: FA390X, FA410X. ....	14
4.1.7 Reading the serial number of refrigerators models e.g.: FA561X, FA421X... ..	15
4.1.8 Reading the serial number of American refrigerators marketed-only – e.g.: SRA20X, SRA20X1 and SRA20NE and panelled/bodyworked – e.g.: FA720X, FA550X): .....	16
4.1.9 Reading the serial number of refrigerators ARCELIK or ARTIC models e.g: CV102A CV260NF,CV270A,FA120A,FC320BNF,FC420BNF,FD250A ... ..	16
4.1.10 Reading serial number refrigerators models e.g: SRA25X/2 .....	17
4.1.12 Reading the serial number of refrigerators models e.g.: FD240AP.....	18
4.1.13 Reading the serial number of wine cellar Series CVI38... ..	18
4.1.14 Reading the serial number of refrigerators models e.g.:FA660,FA661,FA662,SS660,SS661,SS662 .....	19
4.2 WASHING .....	19
4.2.1 Reading the serial number of washing machines e.g.: K600TL1, S600TL1, STL60,STL80,STL120, TLS6,TLS8,TLS12... ..	19

4.2.2 Reading the serial number of washing machines produced by BOSCH (e.g.: WML128, WML148, WML168).....	20
4.2.3 Reading the serial number of drying machines produced by BOSCH (e.g.: CDL83) The label is positioned on the rear casing near the upper right angle. ....	20
4.2.4 Reading the serial number of washing machines models e.g: SWM40T, SWM60E, SWM65,SWM85,SWM834... ..	21
4.2.5 Reading the serial number of washing machines models e.g.: LB601, LB401... ..	22
4.2.8 Reading the serial number of washing machines models e.g: LBS86, LBS105,LBS106,LBS107,LBS126,LBS127, AS61...,AS62...,AS63... ..	23
4.3 COOKING .....	24
4.3.1 Reading the serial number of microwave ovens models e.g: FME20, SC45...,S45 .....	24
4.3.2 Reading the serial number of ovens models e.g.: FMC24, FMC30,FV38 , FP38X, FM38X... ..	25
4.3.3 Reading serial number ceram/induction hobs models e.g: SE2730TC,SE2321TC, SE2631TC SE644ID,SE640ID... ..	26
4.3.4 Reading serial number ceram/induction hobs models e.g: SE2741X.....	26
5. HOODS/SINKS SMEG PRODUCTION.....	27
5.1 Reading the serial number on bar code – smeg hoods/sinks e.g: KTS75, KSE9700,KSE6500 ETC...sinks series LQ.....	27
5.2 Reading the serial number on the feature label hoods models e.g: KSEP600, KSE9700,KSE6500 etc.....	28
5.3 Reading the serial number of hoods models e.g: KSEIV950X, KSEIV960X.KSEIV97X etc... ..	29
5.4 Reading the serial number models e.g: KSE90X.....	30
6. COFFEE MACHINE .....	31
6.1 Reading the serial number of the coffee machine model SCM1 .....	31
6.2 Reading the serial number of the coffee machine model CM845.....	31
7. FULL SERIAL NUMBER .....	33
7.1 Full Serial Number reading.....	34
7.2 Example of Full Serial Number on the products and packaging labels .....	35

## 1 POSITIONING

DISHWASHERS	WASHING MACHINES/ WASHER-DRYERS
	
<p>When you open the door, you will find the label on the inner door, on the right hand side.</p>	<p>For washing machines/washer dryers produced by Smeg and for appliances marketed, the label is on the panel behind the porthole and may be accessed by opening the porthole.  <b>*Attention: for some of the products marketed the plate is on the back panel.</b></p>

BUILT-IN HOBS	BUILT-IN OVENS
	
<p>A copy of the label is included with the instruction booklet. Another copy is located on the lower part of the hob which is fixed to the casing. In order to read it, you must access the lower part</p>	<p>Open the oven door, the label is on the left hand side, as shown in the picture above.</p>

**HOODS**


You can access the label removing the grease filter. The label is inside the hood.

**FREESTANDING COOKERS**


Open the food warmer. The label is glued to the inside of the compartment. On special 70 cm models (A42, CS71 and similar) the label is glued to the rear casing. Another copy is enclosed with the instruction booklet.



For the Victoria cookers, the label is positioned inside the lower drawer.

**SMEG MARKETING AND CLADDED REFRIGERATORS**


The Smeg plate is inside the compartment, to the lower left, and hidden by the vegetable drawer. A second label with the Smeg supplier/producer data is accessible on the rear, at the top, whereas for side by side refrigerators it will be found on the bottom right.

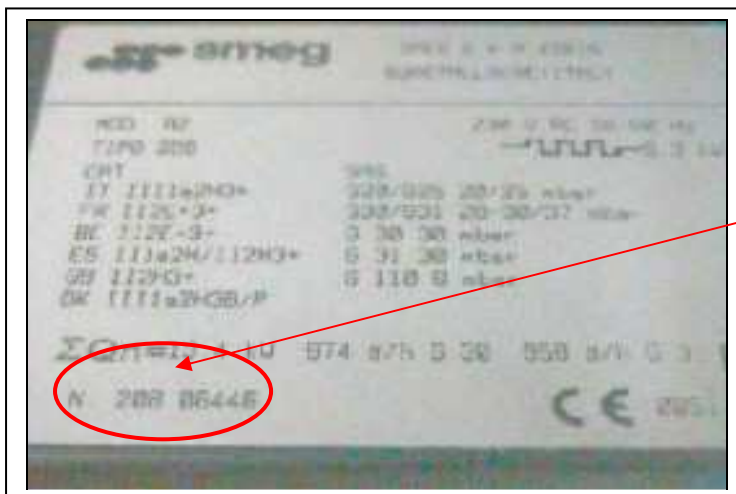
## 2 Reading the serial number of appliances produced by Smeg

### 2.1 Reading the OLD serial number of SMEG COOKING PRODUCTS AND CLADDED REFRIGERATORS (produced BEFORE April 2004)

The serial number foresees **8 digits** which can be identified as follow:

**XXY – ZZZZZ**

- **FIRST 2 DIGITS: XX** are the production week
- **3<sup>rd</sup> DIGIT: Y** is the last digit of the production year
- **LAST 5 DIGITS:** these correspond to an internal sequential number



Example: Week 20 1998

### 2.2 Reading the OLD serial number of SMEG DISHWASHERS AND WASHING MACHINES

(produced BEFORE April 2004)

All the serial numbers of Smeg washing products for Italy , foresee a **10 digits**:

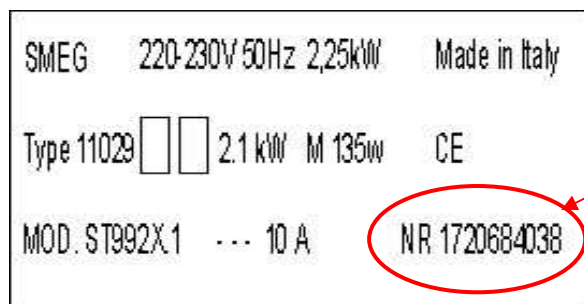
#### 10 DIGITS

**ZZZZZZZ - XX - Y**

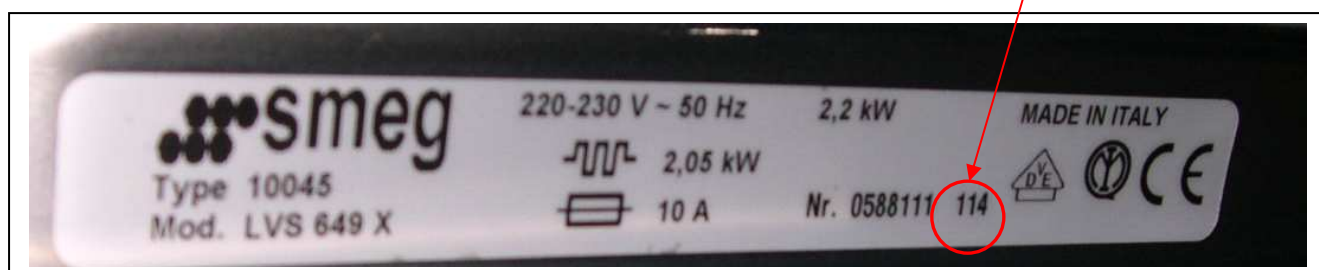
- **FIRST 7 DIGITS: ZZZZZZZ** are related to an internal sequential code
- **8<sup>th</sup>-9<sup>th</sup> DIGITS: XX** is the production week
- **10<sup>th</sup> DIGIT: Y** is the production year

Hereafter some examples:



**1<sup>st</sup> label version**


Example: Week 3 1998

**2<sup>nd</sup> label version**


Example: 11<sup>th</sup> Week 2004

**ATTENTION!**

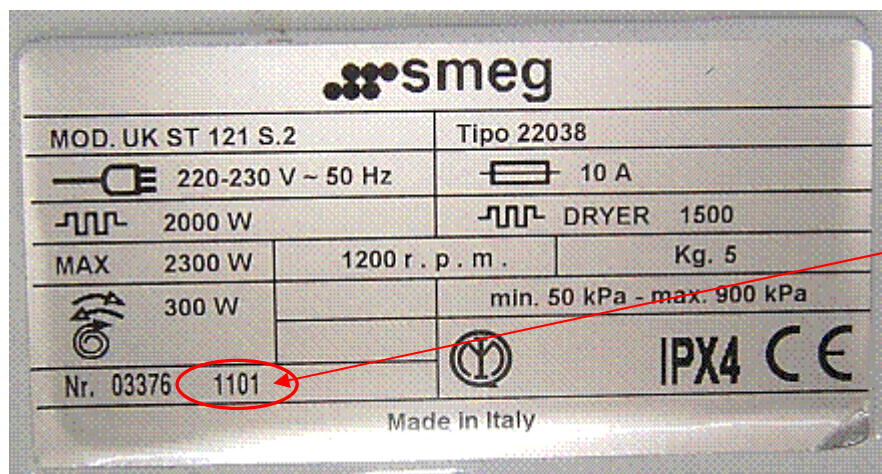
The serial number for models distributed abroad foresees 11 digits, the 8<sup>th</sup> and 9<sup>th</sup> correspond to the production month and no longer to the production week as for products for Italy, and the 10<sup>th</sup> and 11<sup>th</sup> to the production year.

OR

**9 DIGITS**

ZZZZZ - XX - YY

- **THE FIRST 5 DIGITS: ZZZZZ** refer to a progressive code
- **6°-7° DIGITS: XX** PRODUCTION WEEK
- **8°-9° DIGITS: YY** PRODUCTION YEAR



Example: 11<sup>th</sup> Week 2001

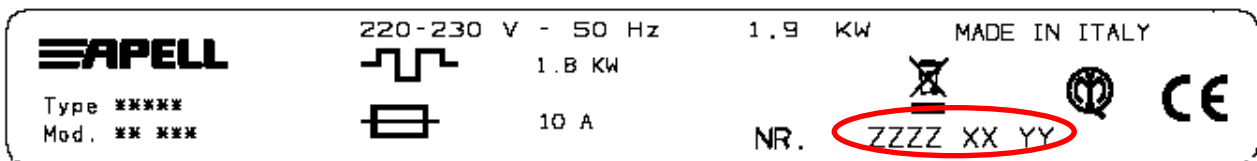
### 2.3 Reading the serial number for DISHWASHERS AND WASHING MACHINES PRODUCED BY SMEG, BRANDED APELL (e.g. APA6148N)

The dishwasher and washing machines serial number branded Apell, is composed by 9 digits:

ZZZZZ= progressive number

XX= production month

YY= production year

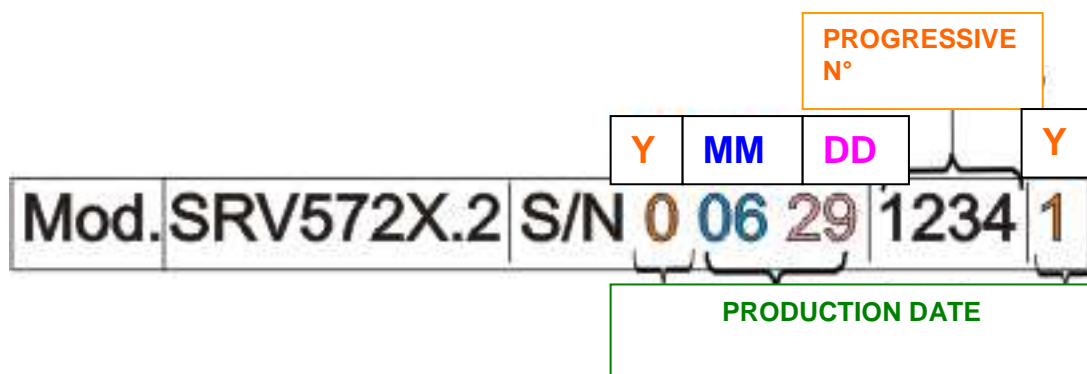


### 2.4 Reading the NEW unified serial number on Smeg cooking/washing products and cladded refrigerators.

Starting from April 2004 the product serial number has been changed and unified.

This **new serial number** will be progressively introduced on all models produced and marketed and will be preceded by **s/n** (serial number).

The new data plate **will be positioned just as before** and will include a table like the one shown below.



Therefore the needed digits for the production date identification are **the first 5 digits**

**1<sup>st</sup> and 10<sup>th</sup> digit** → e.g. here upon **0 and 1 = PRODUCTION 10 YEARS = here upon 2010**

**2<sup>nd</sup>-3<sup>rd</sup> digits** → e.g. **"06" = PRODUCTION MONTH = here upon June**

**4<sup>th</sup>-5<sup>th</sup> digits** → e.g. **"29" = PRODUCTION DAY = 29TH**

**NOTE: Indicate on the report only the 10 digit unified Smeg serial number**

**ATTENTION:** professional appliances, especially ALFA41 and related models, bear the product data label which includes the Smeg unified serial number (located on the side outer casing) and a label which includes the customer number (placed on the rear outer casing).



**SMEG UNIFIED  
SERIAL NUMBER**  
(format ymdd)



**→ATTENTION:** for the gas model oven **SE900**...the serial number is composed by 8 digits:

1<sup>st</sup>-2<sup>nd</sup> digits: **PRODUCTION YEAR**  
3<sup>rd</sup>-4<sup>th</sup> digits: **PRODUCTION MONTH**  
5<sup>th</sup>-6<sup>th</sup>-7<sup>th</sup>-8<sup>th</sup> digits: progressive n°



### 3. READING THE BAR CODE ON THE PACKAGE STRIP

Reading the serial number of Smeg cooking/washing products and cladded refrigerators on the barcode located on the package strip.

Example: 04903735060622200104

0490373= PRODUCT CODE

5= YEAR

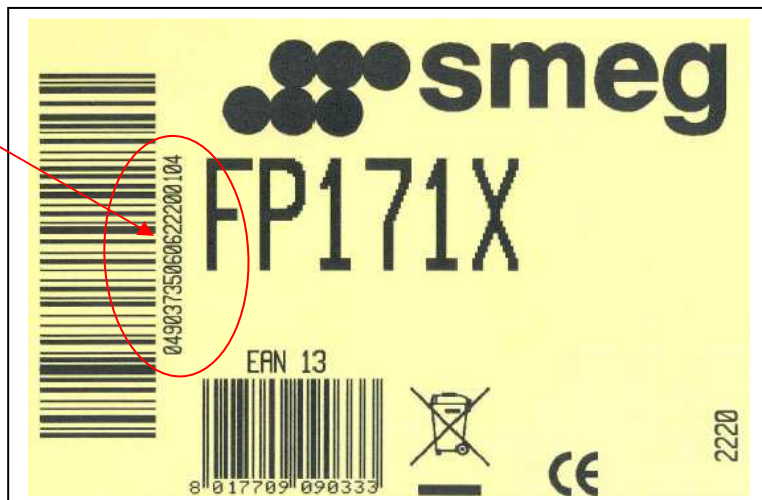
06=MONTH

06=DAY

2220= SEQUENTIAL N.

01= PLANT N.

04= PRODUCTION LINE



#### 4. READING THE SERIAL NUMBER ON THE MARKETED APPLIANCES

**NOTE: For appliances marketed only indicate faithfully on the report the figures shown on the product data label.**

##### 4.1 COLD

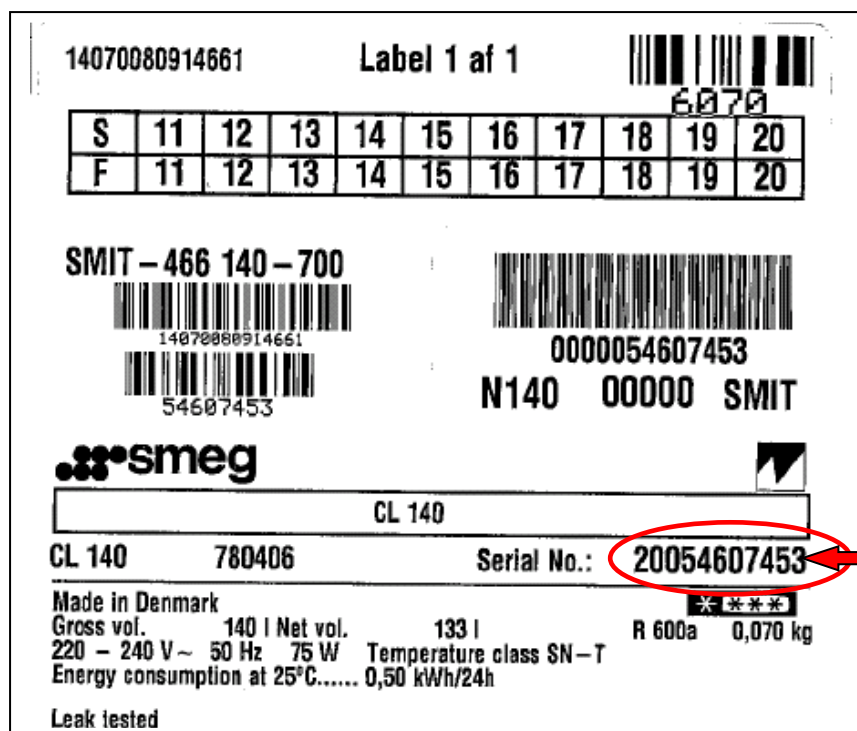
##### 4.1.1 Reading the serial number of refrigerators models e.g.: FC40 and related, CL140...

The label with the serial number is positioned on the upper part of the fridge, at the top right.

The serial number, including 11 digits, should be read as follows:

**YYYY-XX-ZZZZZ**

- first 4 digits YYYY: production year
- 4<sup>th</sup>-5<sup>th</sup> digits XX: production week
- last 5 digits: sequential number



14070080914661      Label 1 of 1      6070

S	11	12	13	14	15	16	17	18	19	20
F	11	12	13	14	15	16	17	18	19	20

SMIT - 466 140 - 700

14070080914661      0000054607453

54607453      N140 00000 SMIT

**smeg**

CL 140

CL 140      780406      Serial No.: **20054607453**

Made in Denmark      \* \* \* \* \*

Gross vol. 140 l Net vol. 133 l      R 600a 0,070 kg

220 - 240 V ~ 50 Hz 75 W      Temperature class SN-T

Energy consumption at 25°C..... 0,50 kWh/24h

Leak tested

Example: Week 46 2005

→ For old appliances it is possible to find serial number made by **8 digits**:  
e.g. **904** 01370 (4<sup>th</sup> week 1999):

1<sup>st</sup> DIGIT= PRODUCTION YEAR

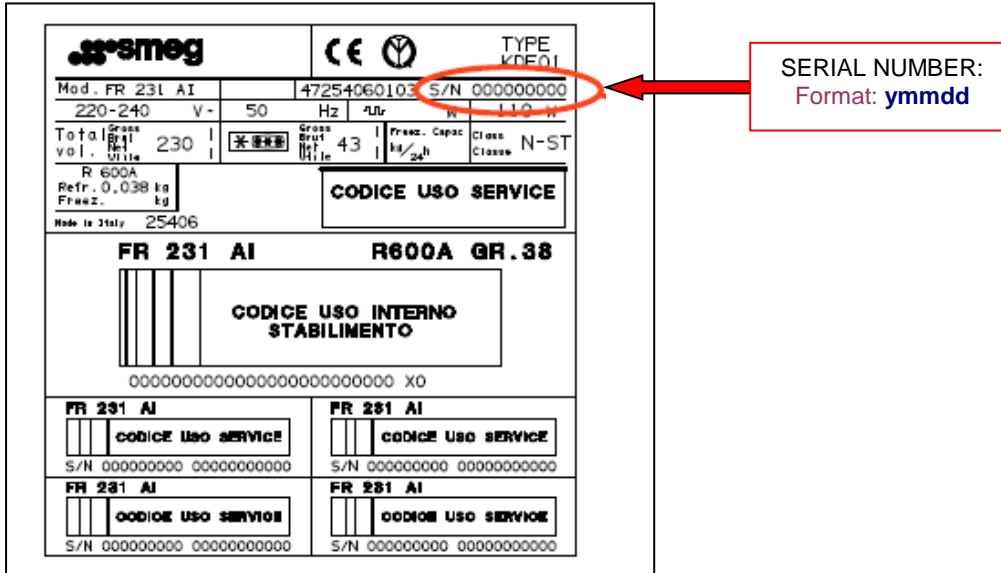
2<sup>nd</sup>-3<sup>rd</sup> DIGITS= PRODUCTION WEEK

**NOTE: Indicate the 11 digit or 8 digit serial number on the report.**

#### 4.1.2 Reading the serial number of refrigerators produced by INDESIT COMPANY-MERLONI ELETTRODOMESTICI (e.g.: CR330, FR231A)

The serial number includes 9 digits:

- 1<sup>st</sup> digit = PRODUCTION YEAR
- 2<sup>nd</sup>-3<sup>rd</sup> digits = PRODUCTION MONTH
- 4<sup>th</sup>-5<sup>th</sup> digits = PRODUCTION DAY
- The 4 remaining digits are a sequential

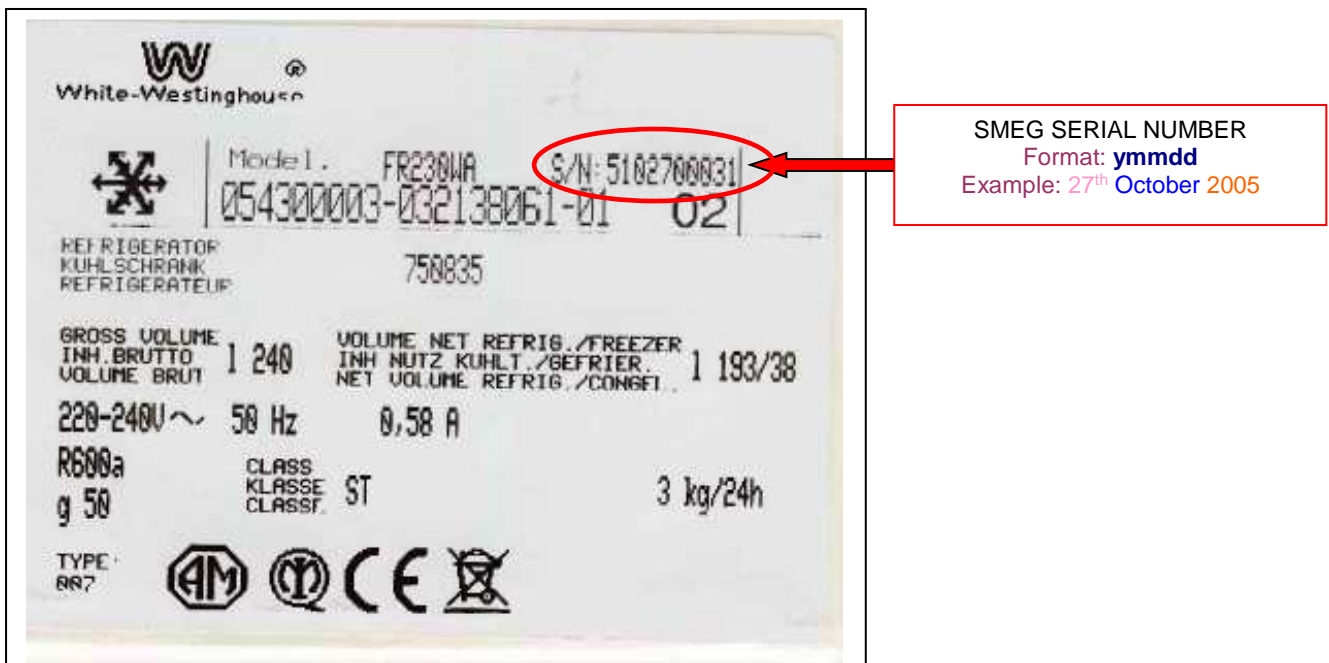


**SERIAL NUMBER:**  
Format: **ymmdd**

**NOTE:** Indicate the 9 digit serial number on the report.

#### 4.1.3 Reading the serial number of refrigerators models e.g: CR305-Smeg branded , FR230WA-W.Westinghouse branded)

The data plate which includes the **Smeg** serial number is as follows:



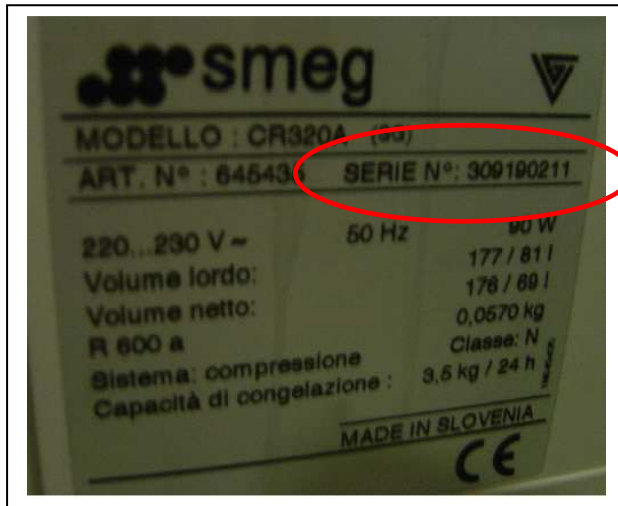
**SMEG SERIAL NUMBER**  
Format: **ymmdd**  
Example: 27<sup>th</sup> October 2005

**NOTE:** Indicate the 10 digit Smeg serial number on the report.

#### 4.1.4 Reading the serial number of refrigerators models e.g: FC325..., FC375... FC395..., CV235..., CR320...

Reading the **9 digits** serial number, for **marketed-only products**

1<sup>st</sup> digit = **PRODUCTION YEAR**  
2<sup>nd</sup>-3<sup>rd</sup> digits = **PRODUCTION MONTH**  
4<sup>th</sup>-5<sup>th</sup> digits = **PRODUCTION DAY**



Example: 19<sup>th</sup> September 2003

**NOTE: Indicate on the report the serial number of the product marketed only.**

Reading the serial number for **cladded** products models e.g.: FAB28, FAB30, FAB32.

The data plate with the **cladded model** and relative **Smeg** serial number is positioned inside the product, where:



**PANELLED/BODYWORKED PRODUCT  
SERIAL NUMBER**

Old Smeg serial number format: **1<sup>st</sup>-2<sup>nd</sup> week, 3<sup>rd</sup> year**. Example: 46<sup>th</sup> Week 2000  
New Smeg serial number format for appliances produced after April 2004: **ymmdd**

**NOTE: Indicate on the report the serial number of the cladded/panelled product.**

The data plate with the **original product model** and the relative **serial number** (including 9 digits) is positioned on the rear of the appliance, where:

1<sup>st</sup> digit = **PRODUCTION YEAR**  
 2<sup>nd</sup>-3<sup>rd</sup> digits = **PRODUCTION MONTH**  
 4<sup>th</sup>-5<sup>th</sup> digits = **PRODUCTION DAY**



ORIGINAL PRODUCT SERIAL  
 NUMBER  
 Example: 3<sup>rd</sup> April 2001

**NOTE:** a- the original product serial number must be included in the confirmation report notes.  
 b- in case of replacement of the compressor also indicate brand and model (below is an example) of the component in the field of defects noticed.

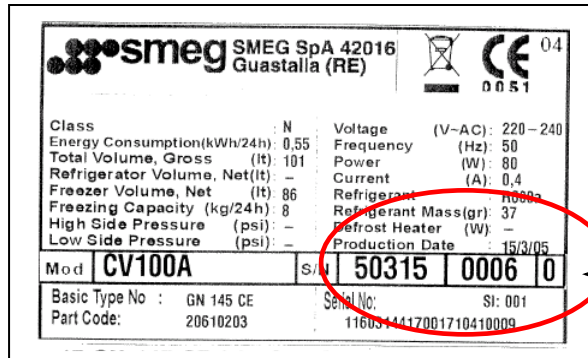


The serial number is pressed on the compressor itself and the production date can be identified as follow:

1°-2°-3°-4°-5°-6°-7° digits/letters= **SEQUENTIAL NUMBER**  
 8°-9°= **PRODUCTION WEEK**  
 10°= **PRODUCTION YEAR**

#### 4.1.5 Reading the serial number of refrigerators models e.g.: CV100A, FC360A, WD430A, FD238B.

The data plate with the **Smeg unified serial number** is positioned inside the product;  
format **ymdddy**:



Example: 15<sup>th</sup> March 2005

**NOTE: indicate the unified Smeg serial number on the report**

#### 4.1.6 Reading the serial number of refrigerators models e.g.: FA390X, FA410X.

The data plate, positioned inside the product, includes the **original product serial number** and the **Smeg serial number of the cladged product**:



ORIGINAL PRODUCT  
SERIAL NUMBER

PANELLED/BODYWORKED PRODUCT  
SERIAL NUMBER

Old Smeg serial number format: 1<sup>st</sup>-2<sup>nd</sup> week, 3<sup>rd</sup> year. Example: 06<sup>th</sup> week 2002

New Smeg serial number format for appliances produced after April 2004: **ymdd**



The general structure of the **original product serial number** is as follows:

**FD** **NNNN** **XXXXXX**

where

**FD**=production date

**NNNN**

The serial number includes 4 digits with the following meaning:

The first two correspond to the year minus 20, Y -20 (e.g.: 81 for a fridge produced in 2001, 83 for another produced in 2003, etc, etc,... ); in other words, you must add the fixed sum of 20 to the first two digits to obtain the correct production year. The remaining two digits correspond to the month (number from 1-12).

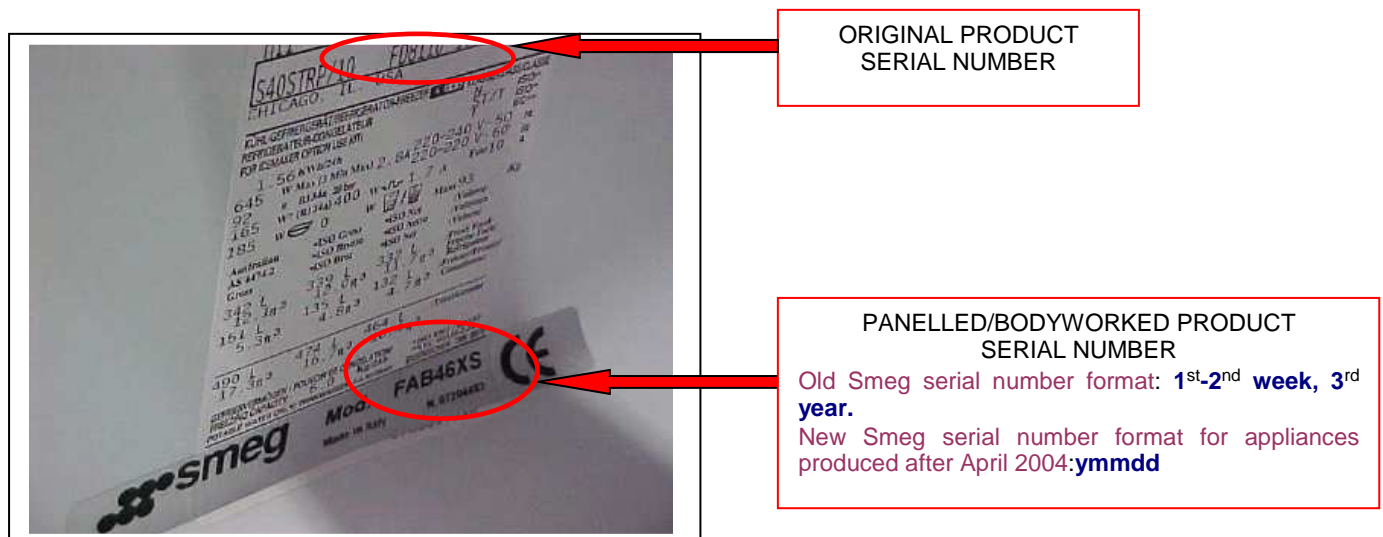
**XXXXXX**

The last 5-6 digits to the right identify the product and may not always be present

**NOTE: Indicate on the report the serial number of the cladded/panelled product.**

#### 4.1.7 Reading the serial number of refrigerators models e.g.: FA561X, FA421X...

The data plate, located inside the product, includes the **original product serial number** and the **Smeg serial number for the cladded product**:



The data plate includes the **original serial number** of the product and has the structure shown below:

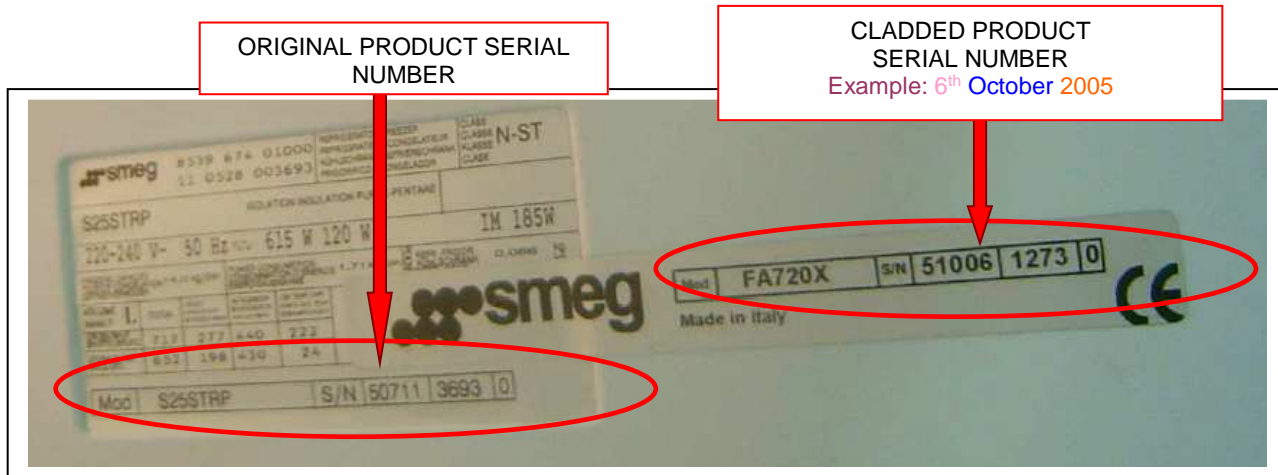
**FD** **8212** **12571571AX**

The first two digits correspond to the year plus 20, Y +20 (therefore 82+20=102 where 02=2002); and 83 would be 103 and hence 2003, whereas the 3<sup>rd</sup> and 4<sup>th</sup> digits refer to the month (12 hence December).

**NOTE: Indicate on the report the serial number of the cladded/panelled product.**

#### 4.1.8 Reading the serial number of American refrigerators marketed-only – e.g.: SRA20X, SRA20X1 and SRA20NE and panelled/bodyworked – e.g.: FA720X, FA550X):

The plate with the serial number is positioned inside the product and includes the **original product serial number** (for e.g. below S25STRP- s/n 50711 3693 0) and the **serial number of the clad product**.



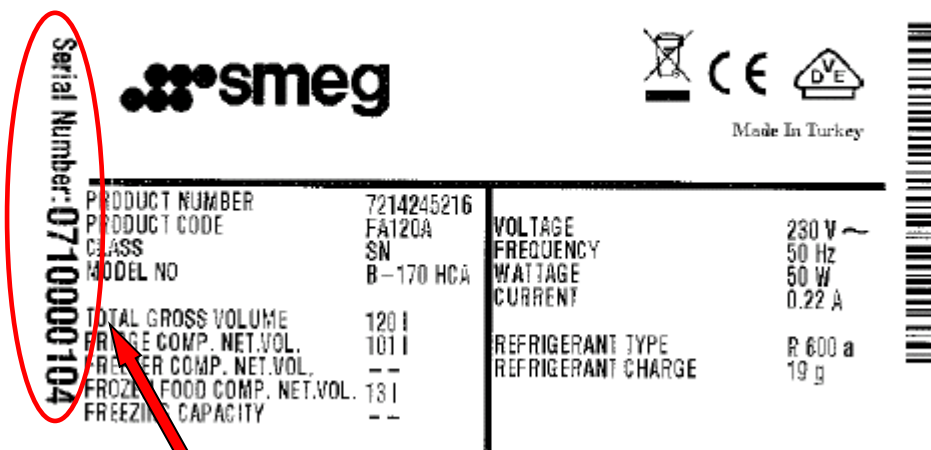
**NOTE: Indicate on the report the serial number of the panelled/clad product.**

#### 4.1.9 Reading the serial number of refrigerators models e.g: CV102A CV260NF,CV270A,FA120A,FC320BNF,FC420BNF,FD250A...ARCELIK or ARTIC

The label including the serial number is on the left lower drawer of the refrigerator including a **10 digits number**

1<sup>st</sup>-2<sup>nd</sup> DIGITS = **PRODUCTION DATE**  
9<sup>th</sup>-10<sup>th</sup> DIGITS = **PRODUCTION MONTH**

72142452160710000104 72142452160710000104



SERIAL NUMBER :  
0710000104  
e.g.: **APRIL 2007**

**NOTE: indicate the 10 digit serial number on the report.**

#### 4.1.10 Reading serial number refrigerators models e.g: SRA25X/2

The serial number is made by 2 letters at the beginning +1 final letter +6 digits:

1<sup>st</sup> letter= production month

2<sup>nd</sup> letter= production year

E.g : **AZ**123456S = **January 2000**

<b>A= January</b> <b>D= February</b> <b>F= March</b> <b>G= April</b> <b>H= May</b> <b>L= June</b> <b>M=July</b> <b>R=August</b> <b>S=September</b> <b>T= October</b> <b>V= November</b> <b>Z=December</b>	1994=L 1995=M 1996=R 1997=S 1998=T 1999=V <b>2000=Z</b> 2001=A 2002=D 2003=F 2004=G 2005=H	<p><b>N.B: the letters defining the year, are repeated each 12 years</b></p> <p>e.g: T=1974  T=1985  T=1998</p>
--	---	---

#### 4.1.11 Reading the serial number of refrigerators models e.g:

**FD24AP,FD24APS,FC32AP,FC32APS,FC32PAX, FC35AP,FC35APS,FC35APX**

The smeg label is stucked inside the freezer compartment left side; the serial number is made by 9 digits:

1<sup>st</sup> digit = PRODUCTION YEAR  
2<sup>nd</sup>-3<sup>rd</sup> digits = PRODUCTION MONTH  
4<sup>th</sup>-5<sup>th</sup> digits=PRODUCTION DAY

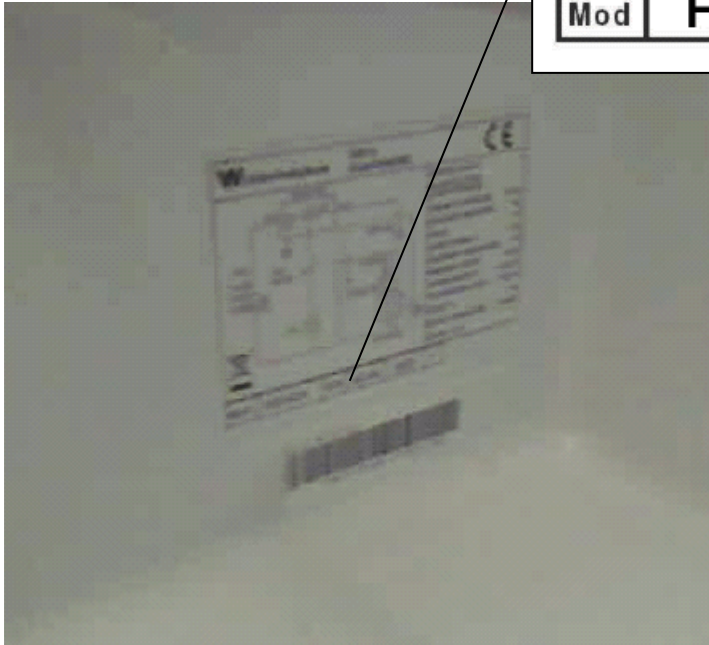


example: 19<sup>th</sup> May 2008

**NOTE: indicate the 9 digit serial number of the product on the report.**

#### 4.1.12 Reading the serial number of refrigerators models e.g.: FD240AP

The Smeg label is positioned inside the freezer compartment (left lower side) , which includes the Smeg serial number:



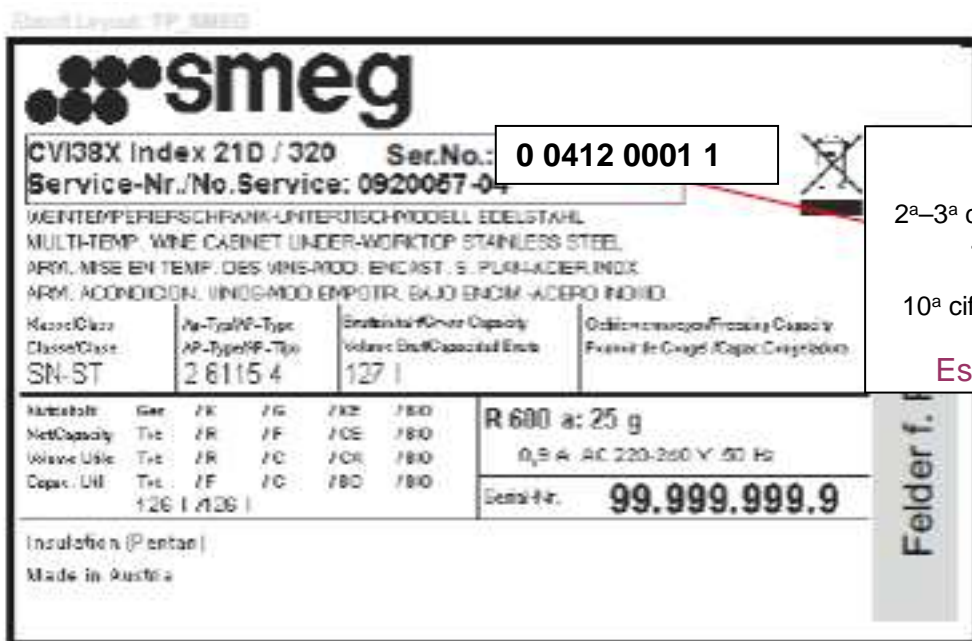
Mod	<b>FD240AP</b>	S/N	<b>00311</b>	<b>0001</b>	<b>1</b>
-----	----------------	-----	--------------	-------------	----------

1<sup>st</sup> digit = **DECADE**  
 2<sup>nd</sup>–3<sup>rd</sup> digits = **PRODUCTION DATE**  
 4<sup>th</sup>–5<sup>th</sup> digits = **PRODUCTION DAY**  
 10<sup>th</sup> digit = **PRODUCTION YEAR**

e.g: 11<sup>th</sup> **March** **2010**

#### 4.1.13 Reading the serial number of wine cellar Series CVI38...

The smeg label is positioned inside the low left side of the compartment, it includes the unified **10 digit Smeg serial number**:



**0 0412 0001 1**

1<sup>a</sup> cifra= **decennio**

2<sup>a</sup>–3<sup>a</sup> cifra= **MESE DI PRODUZIONE**

4<sup>a</sup>–5<sup>a</sup> cifra= **GIORNO DI PRODUZIONE**

10<sup>a</sup> cifra = **ANNO DI PRODUZIONE**

Esempio: 12 **Aprile** **2010**

#### 4.1.14 Reading the serial number of refrigerators models e.g.: FA660, FA661, FA662, SS660, SS661, SS662

For example KE102E35430022= February 2010

3<sup>rd</sup>-4<sup>th</sup> digits = PRODUCTION YEAR

5<sup>th</sup> digit = PRODUCTION MONTH

## 4.2 WASHING

#### 4.2.1 Reading the serial number of washing machines e.g.: K600TL1, S600TL1, STL60, STL80, STL120, TLS6, TLS8, TLS12...

The plate includes the product serial number and the machine type identification N. and is positioned on the rear casing:



The product serial number comprises 12 digits, of which:

3<sup>rd</sup>-4<sup>th</sup> digits = PRODUCTION YEAR

5<sup>th</sup>-6<sup>th</sup> digits = PRODUCTION WEEK

**NOTE: indicate the 12 digit serial number of the product on the report.**



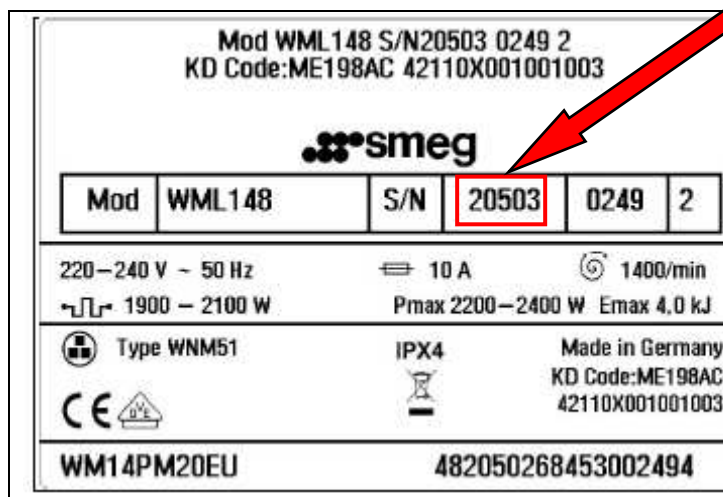
#### 4.2.2 Reading the serial number of washing machines produced by BOSCH (e.g.: WML128, WML148, WML168)

The label is positioned on the rear casing near the upper right angle.



#### PRODUCT SERIAL NUMBER

Example: 2012-05-03  
Year, month, day



- **1st DIGIT:** represents the last digit of the year of production. For example 2 stands for year 2012
- **2<sup>nd</sup> DIGIT and 3<sup>rd</sup> DIGIT:** represent the year. For example 05 stands for May
- **4<sup>th</sup> DIGIT and 5<sup>th</sup> DIGIT:** represent the day 03.

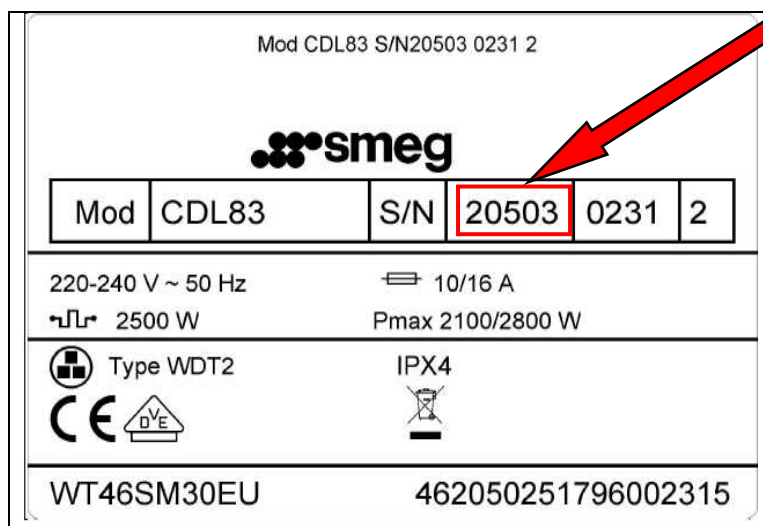
#### 4.2.3 Reading the serial number of drying machines produced by BOSCH (e.g.: CDL83)

The label is positioned on the rear casing near the upper right angle.



#### PRODUCT SERIAL NUMBER

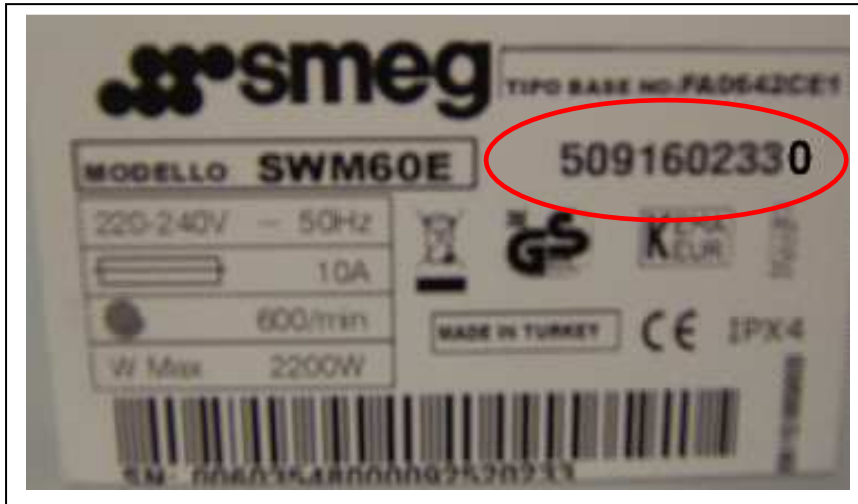
Example: 2012-05-03  
Year, month, day





#### 4.2.4 Reading the serial number of washing machines models e.g: SWM40T, SWM60E, SWM65, SWM85, SWM834...

The label with the serial number is positioned on the back of the appliance.



SERIAL NUMBER SMEG  
(:ymmdd)  
E.g.: 16<sup>th</sup> September 2005

→ It is also possible to identify the production date through the 20 digits on the packing label:

e.g.: 0220435 70430 00025015 = 30 april 2007

8<sup>th</sup> digit = YEAR  
9<sup>th</sup>-10<sup>th</sup> digits = MONTH  
11<sup>th</sup>-12<sup>th</sup> digits = DAY



**NOTE: Indicate the Smeg serial number on the report; if it is not yet present, indicate the bar code as indicated above.**

#### 4.2.5 Reading the serial number of washing machines models e.g.: LB601, LB401...

The data plate with the **Smeg unified serial number** is positioned on the front when opening the porthole, as in the example below:



E.g.: 2<sup>nd</sup> September 2005  
(format: ymmdd)

**NOTE: indicate the unified Smeg serial number on the report.**

#### 4.2.6 -Reading the serial number of washing machines models e.g: 93CT, 43CT...

The data plate which includes the Smeg serial number is positioned on the front and may be accessed by opening the porthole:



PRODUCT SERIAL  
NUMBER  
Example: June 2001

The plate indicates the following:

- **First highlighted box: Model, production code**
- **Second highlighted box: Serial number.**

Read the serial number as follows:

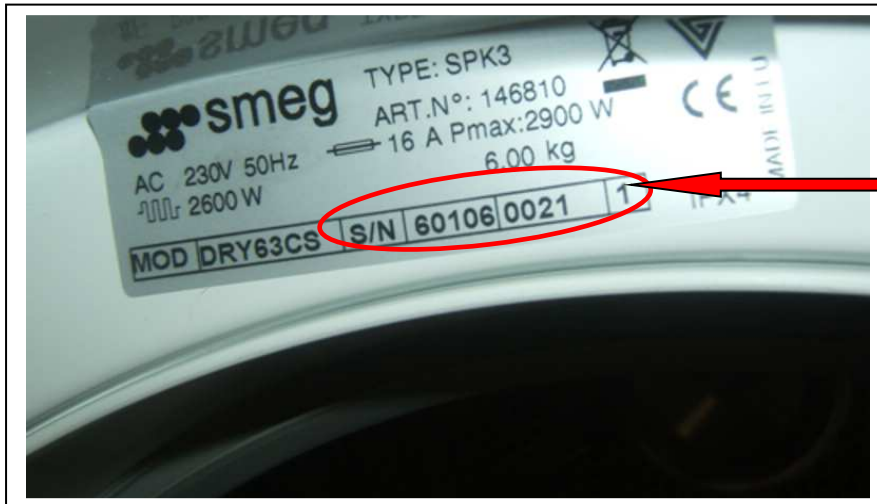
- **01 = Production year**
- **06 = Production Month**
- **82329 = Sequential**

Production code and serial number combined data is also indicated on the third box at the bottom

**NOTE: indicate the 9 digit serial number of the product on the report.**

#### 4.2.7 Reading the serial number of washing machines models e.g: LB86, LB106, LB126, LB107, LB127, DRY61..., DRY62..., DRY63...

The data plate, including the **Smeg unified serial number** (format=ymmdd), is on the panel behind the porthole and can be accessed by opening the porthole.

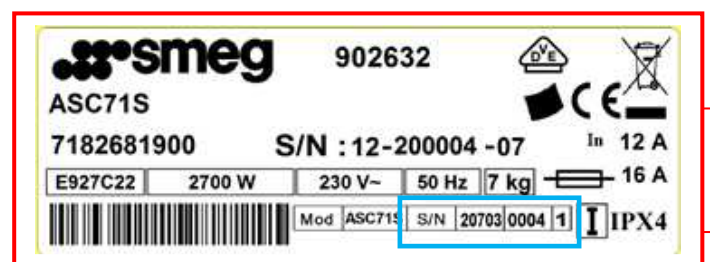


**SMEG SERIAL NUMBER**  
(Format :ymmdd)  
E.g: 6th January 2006

**NOTE: indicate the unified Smeg serial number on the report.**

#### 4.2.8 Reading the serial number of washing machines models e.g: LBS86, LBS105, LBS106, LBS107, LBS126, LBS127, AS61..., AS62..., AS63...

The data plate, including the **Smeg unified serial number** (format=ymmdd), is placed inside the porthole frame and can be accessed by opening the porthole.



**SERIAL NUMBER SMEG**  
(ammgg)  
Ex: 3rd July 2012

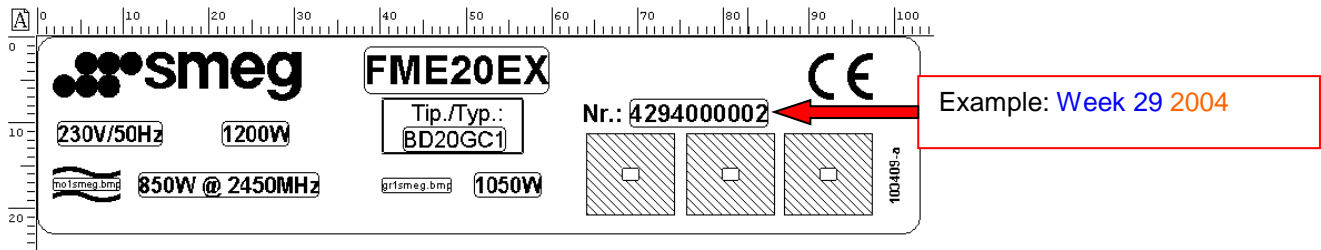
**NOTE: indicate the unified Smeg serial number on the report.**

## 4.3 COOKING

### 4.3.1 Reading the serial number of microwave ovens models e.g: FME20, SC45...,S45

There are two types of Teka serial numbers:

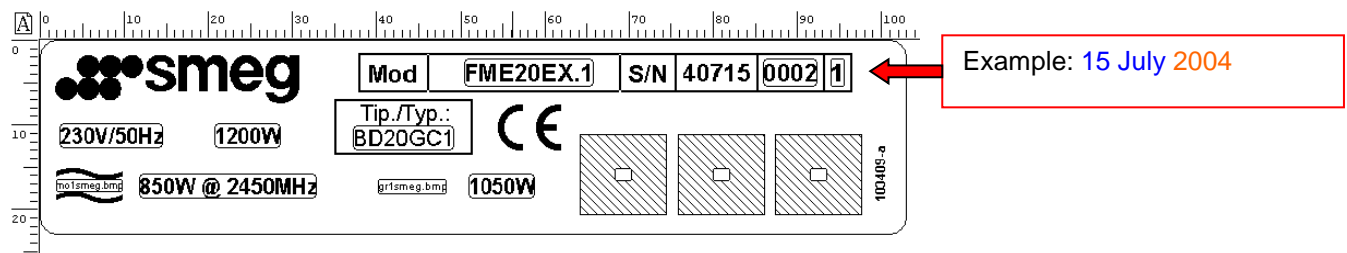
#### - old plate:



The serial number includes 10 digits, to be read from left to right as follows:

- First 4 numbers YWWY: production date (year Y – week WW - year Y)
- The last 6 numbers correspond to the sequential production number

#### - new plate:



The serial number comprises 10 digits with the following layout:

- The first 5 numbers indicate the production date (YMMDD);
- The following 4 numbers indicate the internal production order (technical support is of no interest);
- The last number refers to the production decade increased by 1; so the number is 1 up until the year 2009.

**NOTE: indicate the 10 digit serial number on the report.**

#### 4.3.2 Reading the serial number of ovens models e.g.: FMC24, FMC30, FV38, FP38X, FM38X...

For side opening ovens (e.g. FMC30X1) the label with the serial number can be accessed by opening the door and is positioned on the lower front side.

For front opening ovens (e.g. FP38X1) the plate with the serial number can be accessed by opening the door and is positioned on the right side.

The serial number includes **9 digits**, where:

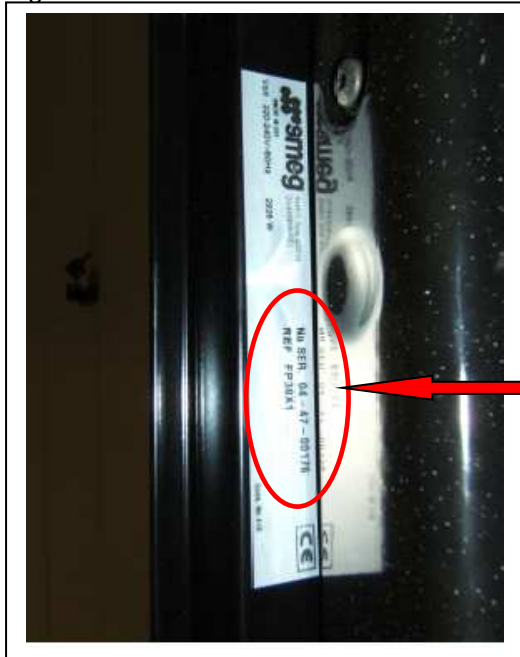
1<sup>st</sup>-2<sup>nd</sup> digits = **PRODUCTION YEAR**  
 3<sup>rd</sup>-4<sup>th</sup> digits = **PRODUCTION WEEK**

e.g.: FMC30X1



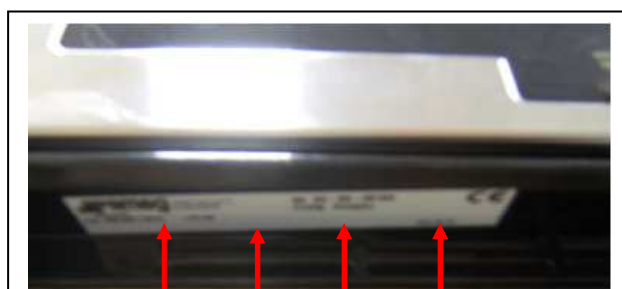
Example: **Week 27** **2004**

e.g.: FP38X1



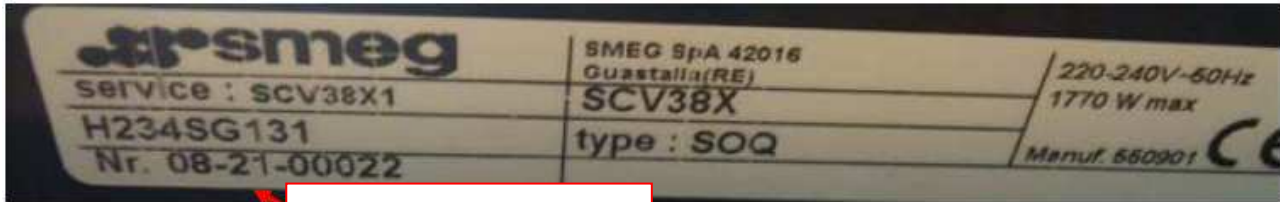
Example: **Week 47** **2004**

**\*\*\*Attention:** for FV38X/XA models the feature label, including serial number, is accessed by opening the door located under the front panel.



**NOTE: indicate the 9 digit serial number of the product on the report.**

**\*\*ATTENTION:** for the models FMC24, FMC30, FV38, FP38X, FM38X, SCV38X: the feature label including the serial number is positioned below the front panel, just opening the door.



e.g: 21st week 2008

#### 4.3.3 Reading serial number ceram/induction hobs models e.g: SE2730TC, SE2321TC, SE2631TC SE644ID, SE640ID...

The label including the serial number is stucked on the lower casing and the serial number can be made by:

→ 8 digits:

1<sup>st</sup> digit= PRODUCTION YEAR  
2<sup>nd</sup>-3<sup>rd</sup> digits= PRODUCTION WEEK

e.g: N 750 00726

7= 2007  
50=50<sup>th</sup> week

#### 4.3.4 Reading serial number ceram/induction hobs models e.g: SE2741X

The label including the serial number is stucked on the lower casing and the serial number is made by:

e.g: 23606 AG 9 01 0092 = 1<sup>st</sup> digit → production year  
2<sup>nd</sup> digit → production week  
4<sup>th</sup>-5<sup>th</sup>-6<sup>th</sup>-7<sup>th</sup> → progressive number

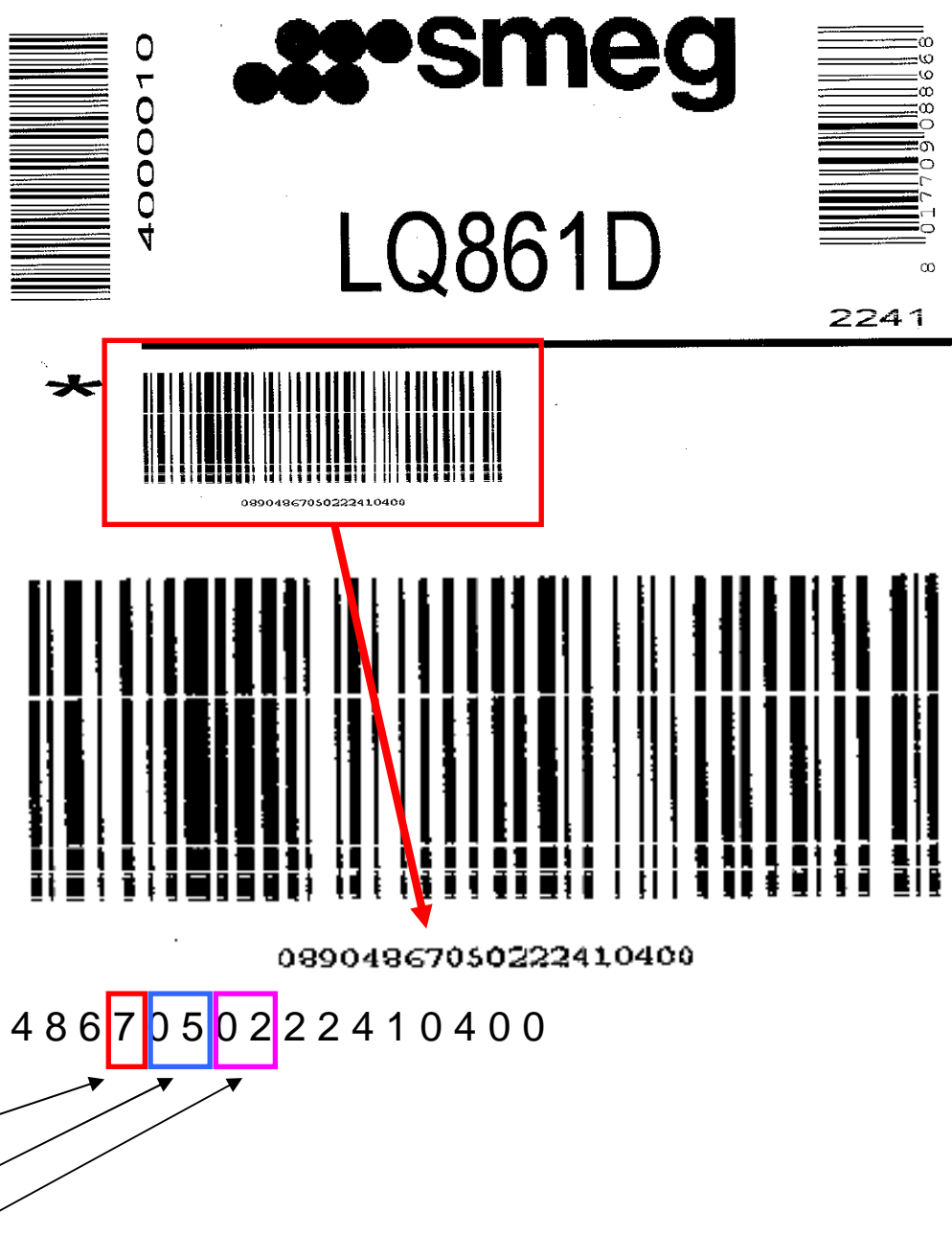
Example above: 1<sup>st</sup> week 2009



## 5. HOODS/SINKS SMEG PRODUCTION

### 5.1 Reading the serial number on bar code – smeg hoods/sinks e.g: KTS75, KSE9700, KSE6500 ETC...sinks series LQ...

The production date identification can be made by the packing bar code on the packing :



The diagram illustrates the process of reading a Smeg barcode to identify the production date. It shows the Smeg logo, the model number LQ861D, and a detailed breakdown of the barcode 08904867050222410400.

The barcode is divided into sections, with the date information highlighted in a red box. The date is represented by the last six digits of the barcode: 70502.

The date is further broken down into year, month, and day:

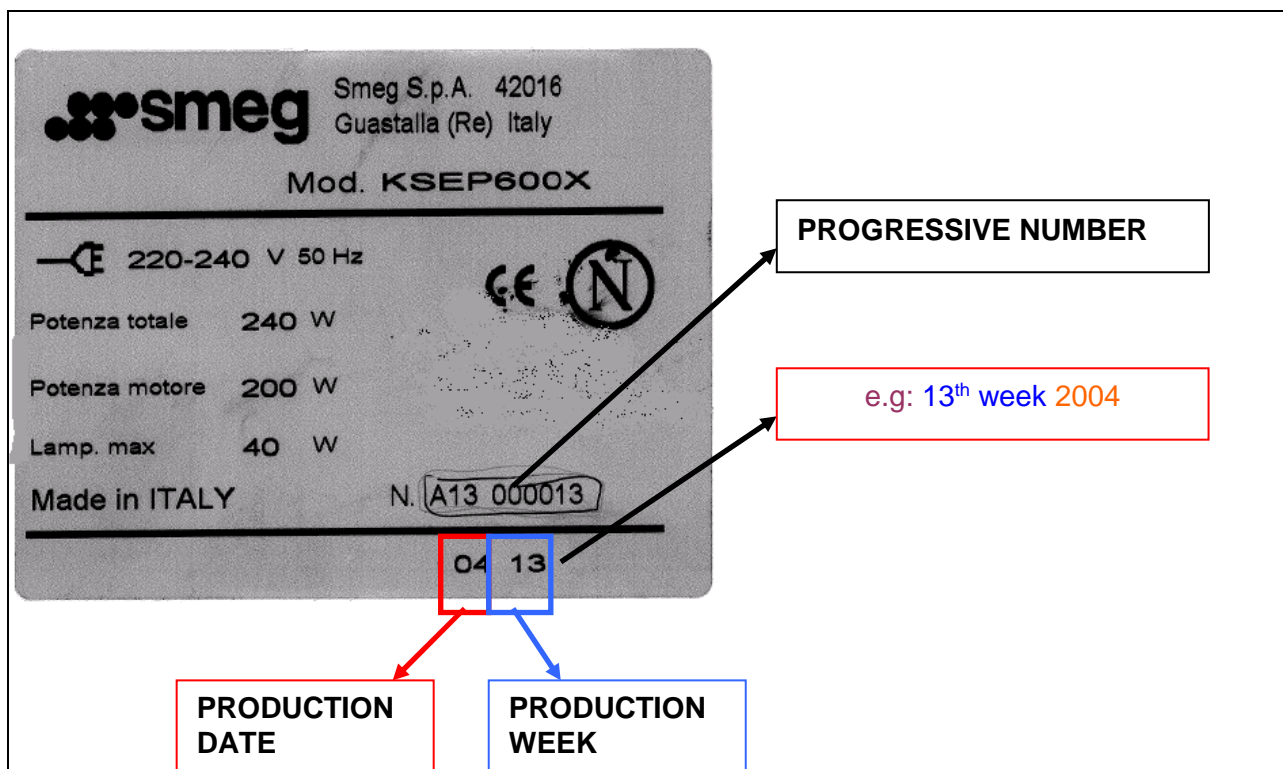
- year: 7
- month: 05
- day: 02

The full barcode number is 08904867050222410400.

## 5.2 Reading the serial number on the feature label hoods/sinks models e.g: KSEP600, KSE9700, KSE6500 etc..., CUP150

### HOODS:

The feature label can be found removing the grease filters and can be as follow:

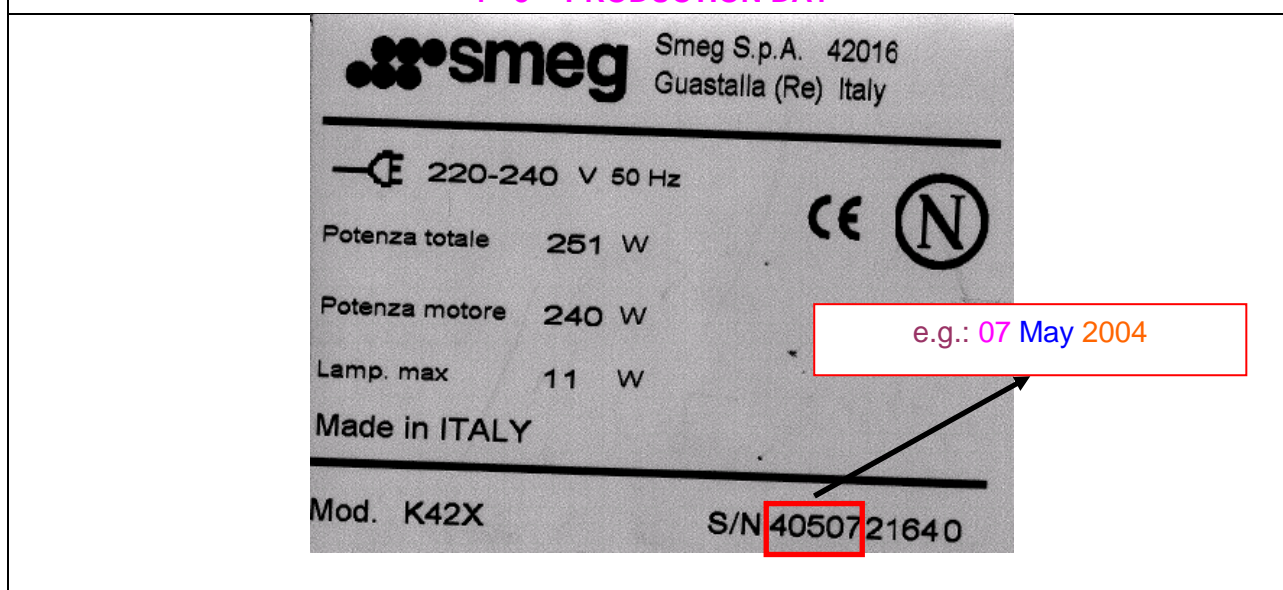


### Serial number with 10 digits:

1<sup>st</sup> digit = **PRODUCTION YEAR**

2<sup>nd</sup>-3<sup>rd</sup>=**PRODUCTION MONTH**

4<sup>th</sup>-5<sup>th</sup>=**PRODUCTION DAY**



**SINKS:**

The label is applied on the bowl.

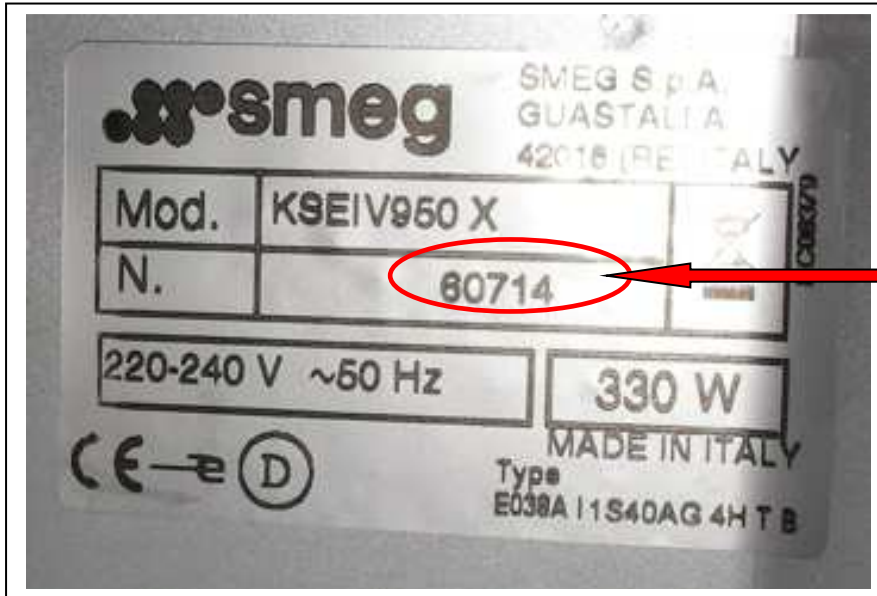


### 5.3 Reading the serial number of hoods models e.g: KSEIV950X, KSEIV960X.KSEIV97X etc...

You can access the label by removing the grease filter. The label is inside the hood.

The serial number is made by **5 digits**:

1<sup>st</sup> = YEAR OF PRODUCTION  
 2<sup>nd</sup>- 3<sup>rd</sup> digits = MONTH OF PRODUCTION  
 3<sup>rd</sup> - 4<sup>th</sup> digits = DAY OF PRODUCTION



E.g.: 14<sup>th</sup> July 2006

### 5.4 Reading the serial number models e.g: KSE90X

You can access the label by removing the grease filter. The plate is inside the hood.

The serial number is made by **5 digits**:

1<sup>st</sup> = YEAR OF PRODUCTION  
 2<sup>nd</sup>- 3<sup>rd</sup> digits = MONTH OF PRODUCTION  
 3<sup>rd</sup> - 4<sup>th</sup> digits = DAY OF PRODUCTION



E.g.: 2<sup>nd</sup> November 2006

## 6. COFFEE MACHINE

### 6.1 Reading the serial number of the coffee machine model SCM1

The feature label is positioned near the water tank and the serial number is made by 12 digits:

1<sup>st</sup>-2<sup>nd</sup> digits = PRODUCTION YEAR  
3<sup>rd</sup>-4<sup>th</sup> digits = PRODUCTION WEEK



## 6.2 Reading the serial number of the coffee machine model CM845.../CMS45....

The serial number is made by 10 digits:

1<sup>a</sup> digit = **PRODUCTION YEAR**  
 2<sup>a</sup>-3<sup>a</sup> digits = **MONTH OF PRODUCTION**  
 3<sup>a</sup>-4<sup>a</sup> digits = **DAY OF PRODUCTION**



It's possible to identify the production date of the machine also through the bar code label applied on the machine:



E.g:

213019= product reference code  
 090915= 1<sup>a</sup> digit = **PRODUCTION YEAR**  
           2<sup>a</sup>-3<sup>a</sup> digits= **PRODUCTION MONTH**  
           3<sup>a</sup>-4<sup>a</sup> digits = **PRODUCTION DAY**

30035= production line



## 7. FULL SERIAL NUMBER

## Full Serial Number

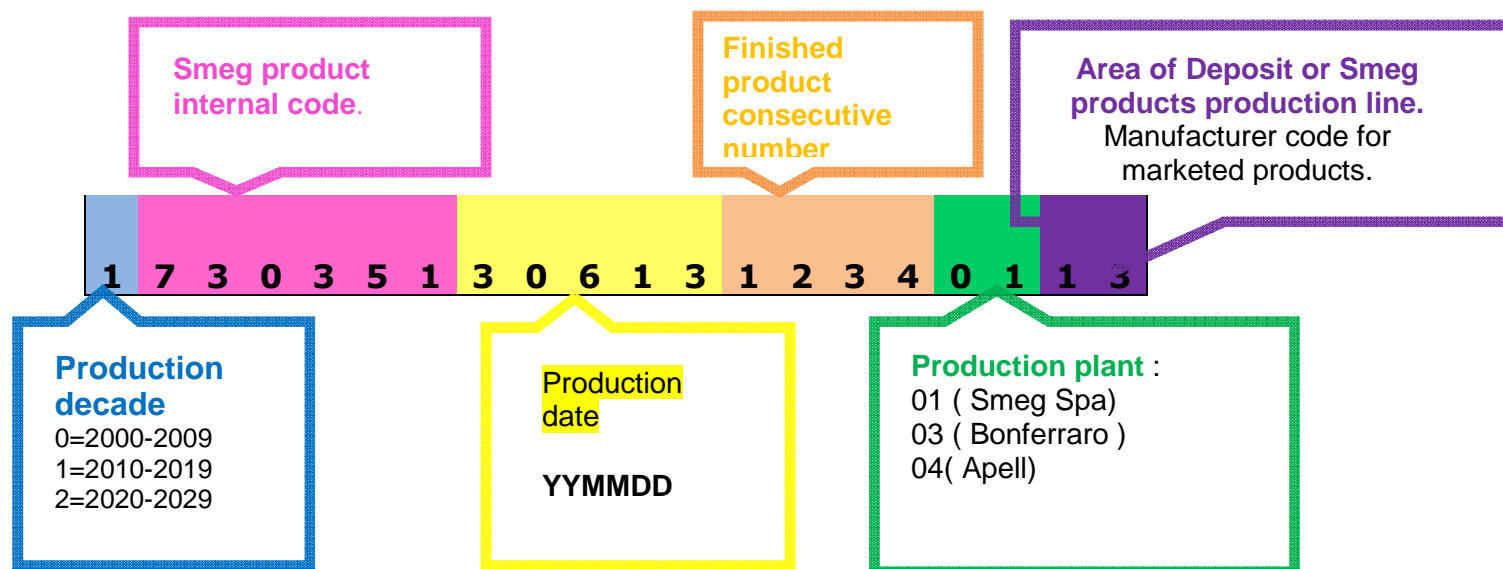
To improve some management procedures, it became necessary to introduce the Full Serial Number (20 characters), called FULL S/N on the identification label. The Serial Number S/N and Full S/N are chromatically mapped as per the table below:

## Current Serial Number

## New Full Serial Number

							3	0	6	1	3	1	2	3	4	1			
1	7	3	0	3	5	1	3	0	6	1	3	1	2	3	4	0	1	1	3

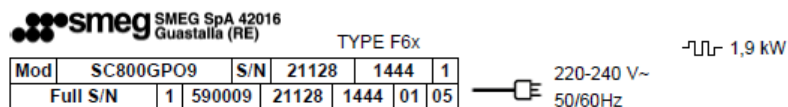
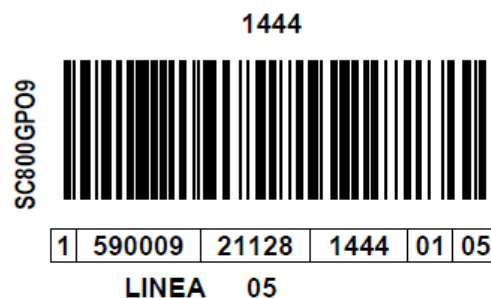
## 7.1 Full Serial Number reading



## 7.2 Example of Full Serial Number on the products and packaging labels

The layout of the internal labels must include the full 20-digit number.

### Example of Packaging Label



Full Serial Number : 1 590009 21128 1444 01 05

### Example of Product Label

SC800GPO9

21128	1444	1
-------	------	---

SC800GPO9

21128	1444	1
-------	------	---

SC800GPO9

21128	1444	1
-------	------	---

LU I2E			20			
DK III1a2H3B/P	8		20		30	30
SE III1ab2H3B/P	8	8	20		30	30

Σ Qn=2,60 kW      189 g/h G30      185 g/h G31

220-240 V~ 50/60Hz  
 -П- 1,9 kW    TYPE F6x  
 MADE IN ITALY

ДУХОВОЙ  
 КЛАСС 3A1  
 220-240 В~  
 50/  
 ТИ  
 СД

Mod	SC800GPO9	S/N	21128	1444	1	01	05
Full S/N	1	590009	21128	1444	01	05	

Serial Number for the service to enter in the report.

Full Serial Number