

12.3.2 Classic Doors

- Disconnect the refrigerator from the power supply.
- Turn off the water (if connected).
- Remove the hinge cover.
- Disconnect the door hose from the John Guest fitting.
- Unplug the wiring harness edge connector and remove the three hinge bracket mounting screws.
- Remove the top hinge bracket.



- Remove the screw securing the guide to the door.
- Remove the hose and wiring harness from the guide.



- Turn the guide 90 degrees to the door and lift to remove it from the door.

Replace in reverse order.



12.4 Soft Closing Doors

Selected models are fitted with a soft closing door mechanism whereby the door will close by itself from approximately 45 degrees. This mechanism is located in the bottom edge of the door panel and uses a different type of bottom hinge for the door.

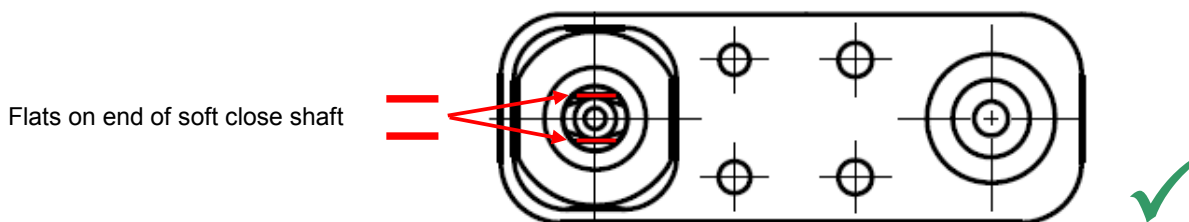
The soft close mechanisms are specific to the door size and there are different mechanisms for left hand and right hand doors.

Removal and fitting of the door is carried out with the door opened at 90 degrees to the cabinet.



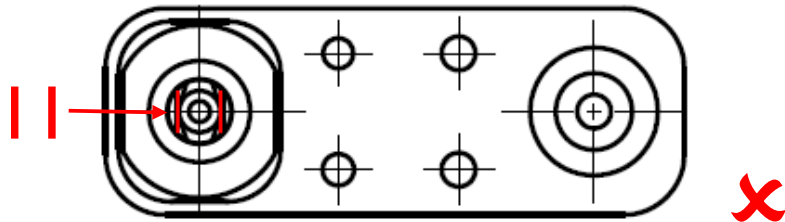
12.4.1 Fitting Soft Closing Doors

1. Perform a visual check to ensure that the pin flats are aligned as shown below so that the unit is in the open position.



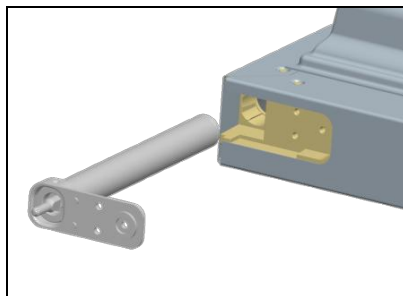
The above figure shows the soft close mechanism in the open position.

Flats on end of soft close shaft

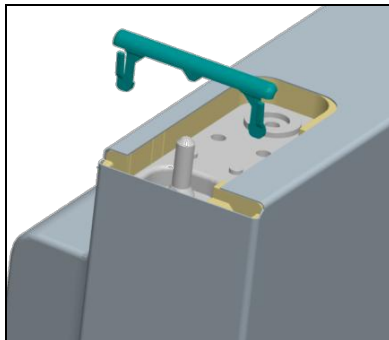


The above figure shows the soft close mechanism in the **closed** position. The door cannot be fitted to the cabinet in this orientation.

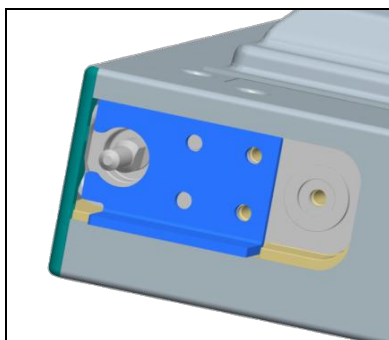
2. Insert the self close mechanism, ensuring that the 'L' marked mechanism is inserted in the left hand door and the 'R' marked mechanism is inserted in the right hand door.



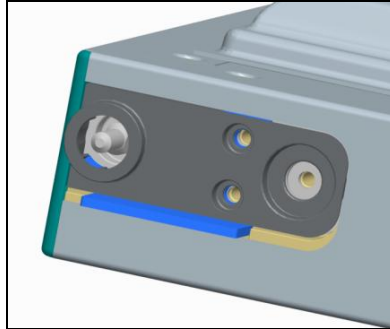
3. Insert the door corner trim.



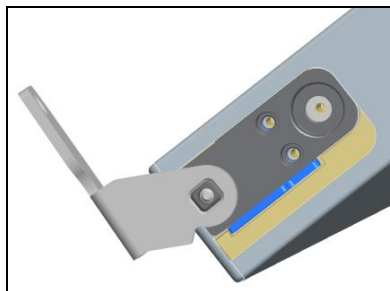
4. Place the door stop bracket as shown below using the locating lugs on the soft close mechanism.



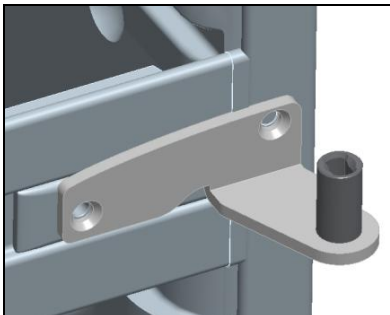
5. Place the bearing onto the door stop as shown below using the locating feature on the soft close mechanism.



6. Insert the centre hinge bracket into the assembly **at $\sim 90^\circ$** in order to make the bearing concentric with the hinge pin. If the centre hinge bracket cannot be inserted at this angle, the soft close mechanism must be turned to this angle.



7. Use screws to fix the parts in place.
8. Remove the centre hinge bracket from the soft close mechanism and fit in place on the cabinet



9. Assemble the door onto the centre hinge bracket at $\sim 90^\circ$. Fit the top hinge, align the door to the cabinet and tighten the top hinge screws.



12.4.2 Troubleshooting Guide

Problem	Possible Cause	What to Do
The soft close mechanism is in the closed position when trying to fit it to the door.		<ul style="list-style-type: none"> Use the centre hinge bracket to reset the unit to the open position.
The soft close door assembly cannot be assembled onto the centre hinge bracket.	<ul style="list-style-type: none"> The soft close mechanism is in the closed position. 	<ul style="list-style-type: none"> Remove the door and fit the soft close mechanism as described in Section 12.4.1 step 1.
	<ul style="list-style-type: none"> The bearing is not concentric. 	<ul style="list-style-type: none"> Ensure that the bearing is fitted correctly as described in Section 12.4.1 step 6.
The soft close door won't close.	<ul style="list-style-type: none"> The incorrect soft close mechanism has been fitted (e.g. 'L' unit in RH door). 	<ul style="list-style-type: none"> Fit the correct soft close mechanism.
	<ul style="list-style-type: none"> The door has been fitted incorrectly. 	<ul style="list-style-type: none"> Follow the steps in Section 12.4.1 for fitting self close mechanism to the door and fitting the door to the cabinet.
	<ul style="list-style-type: none"> The soft close mechanism is damaged. 	<ul style="list-style-type: none"> Replace the soft close mechanism.
The soft close door does not pull shut from 5°.	<ul style="list-style-type: none"> The soft close mechanism is out of specification. The soft close mechanism is damaged. 	<ul style="list-style-type: none"> Replace the soft close mechanism.
The soft close mechanism makes a "click" or "creaking" noise.	<ul style="list-style-type: none"> The soft close mechanism is damaged. 	<ul style="list-style-type: none"> Replace the soft close mechanism.
As the door closes, there is a "scuffing" noise.	<ul style="list-style-type: none"> The door gasket is rubbing across the face of the cabinet. 	<ul style="list-style-type: none"> Lubricate the face of the door gasket with talcum powder or an Armor All cleaning wipe.