

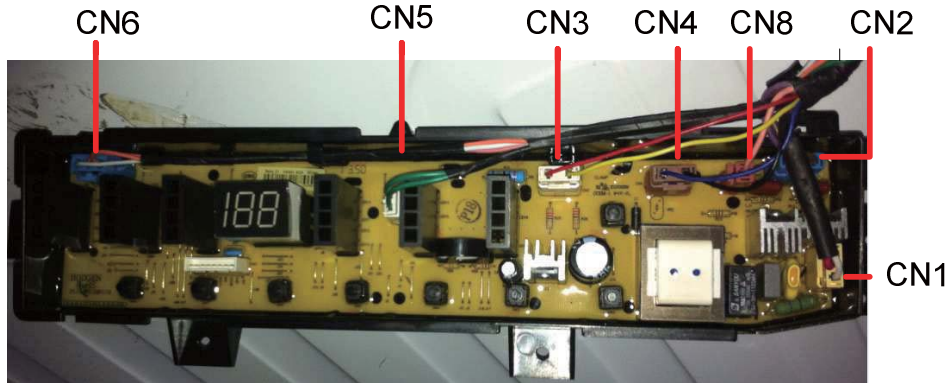
11. Failure/Error Codes

Service mode error code	ERROR DEFINITION
E1	*Valve triac short circuit or * Valve triac diode error
E2	*Pump triac open circuit or *Pump blocked or *Pump triac diode or *Pump rotor locked and does not rotate error
E3	*Unbalance error
E4	*Over flow error
E5	* Water level sensor reading error
E6	* Safety switch opening

Table 11.1 Error definition

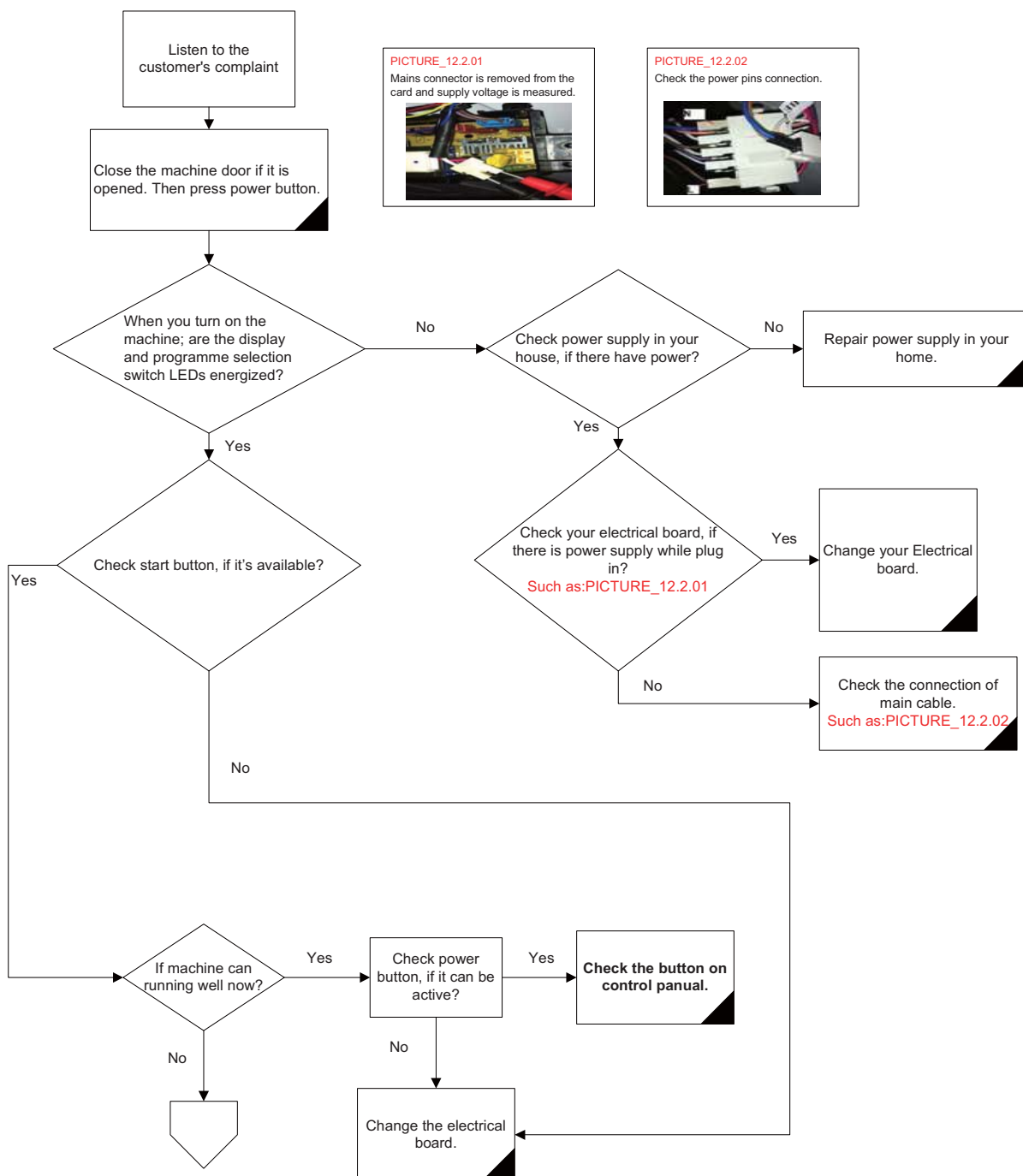
12. Fault Flow / Troubleshooting Diagrams

12.1. Electronic Card Sockets

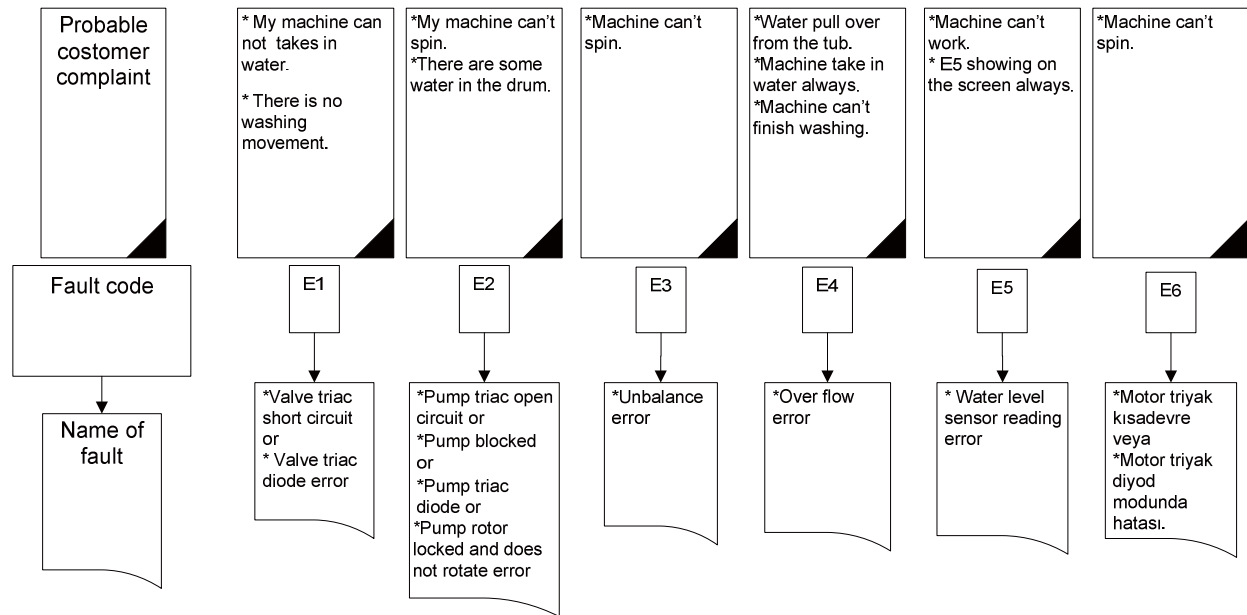


Order No.	Pin Type	Definition	Order No.	Pin Type	Definition
CN1	CDW2.1-2(Yellow)	Power Supply	CN5	CDW1.2-2(White)	Door Switch
CN2	CDW2.1-2(Blue)	Motor	CN6	CDW2.1-3(Blue)	Pressure sensor
CN3	CDW2.1-2(White)	Warm & Flushing Valve	CN8	CDW2.1-1(Red)	Pump
CN4	CDW2.1-2(Brown)	Traction Motor and Cool valve			

12.2. Machine does not start



12.3. Error Codes and Possible Customer Complaints

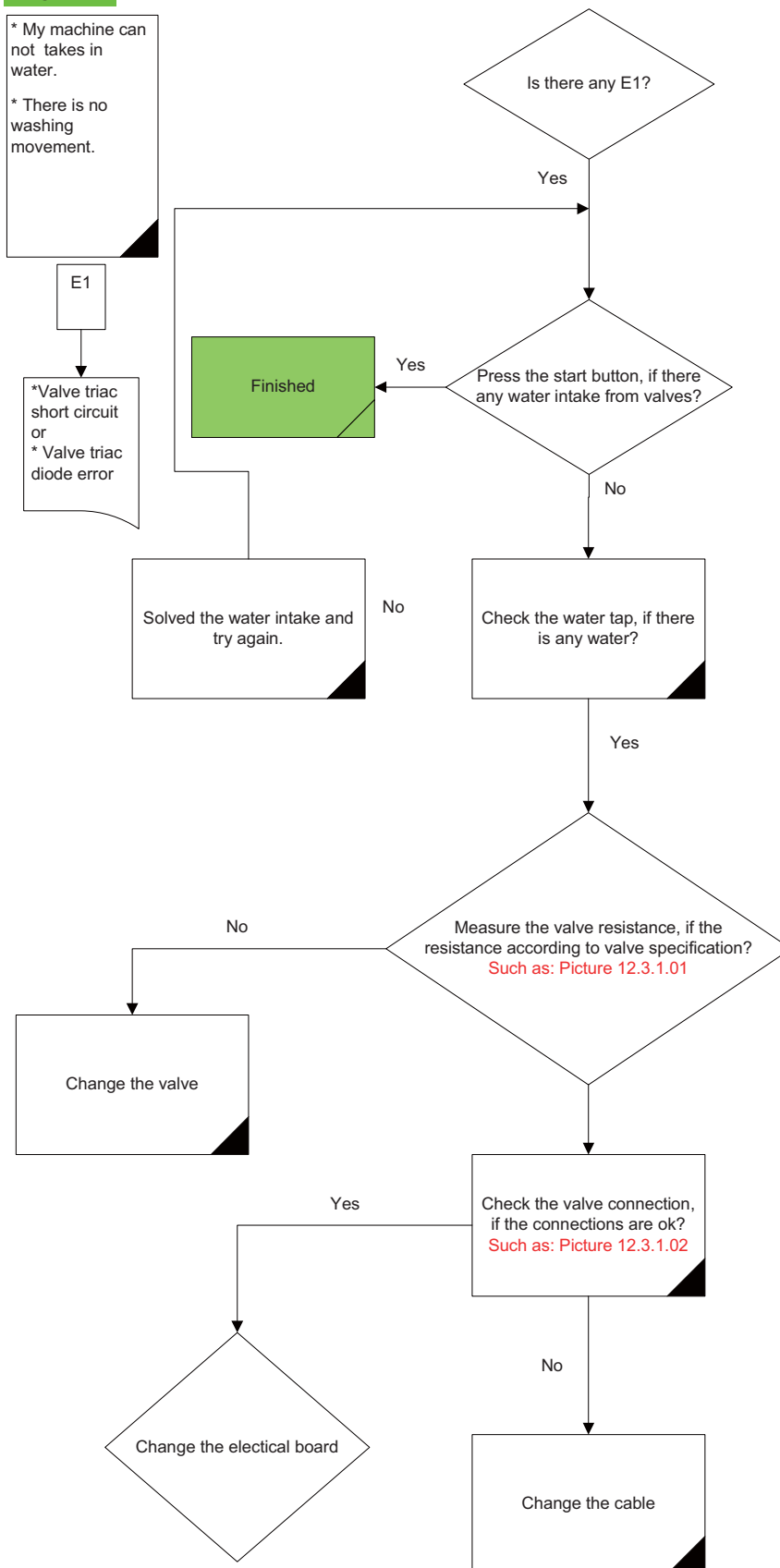


Important Note:
Error codes given do not always mean that the error has arisen from the components.
Socket and cable connections must be checked in the first place.
Make sure that the problems do not arise from loose contact.

12.3.1. E1

* My machine can not takes in water.

* There is no washing movement.



Picture 12.3.1.01
Measure the valve resistance as below picture.



Picture 12.3.1.02
Check the cable connects for the valves.

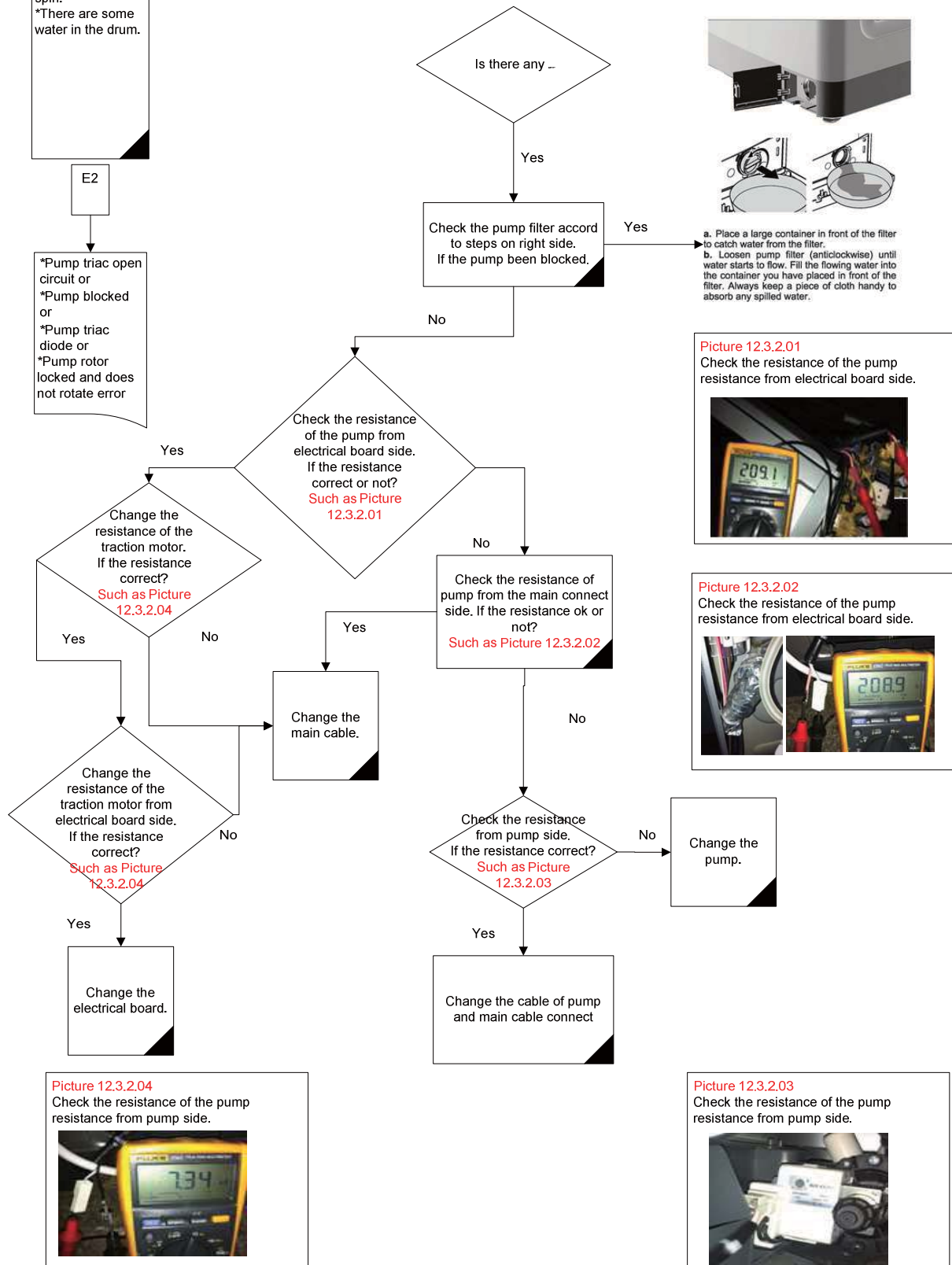


12.3.2. E2

*My machine can't spin.
*There are some water in the drum.

E2

*Pump triac open circuit or
*Pump blocked or
*Pump triac diode or
*Pump rotor locked and does not rotate error

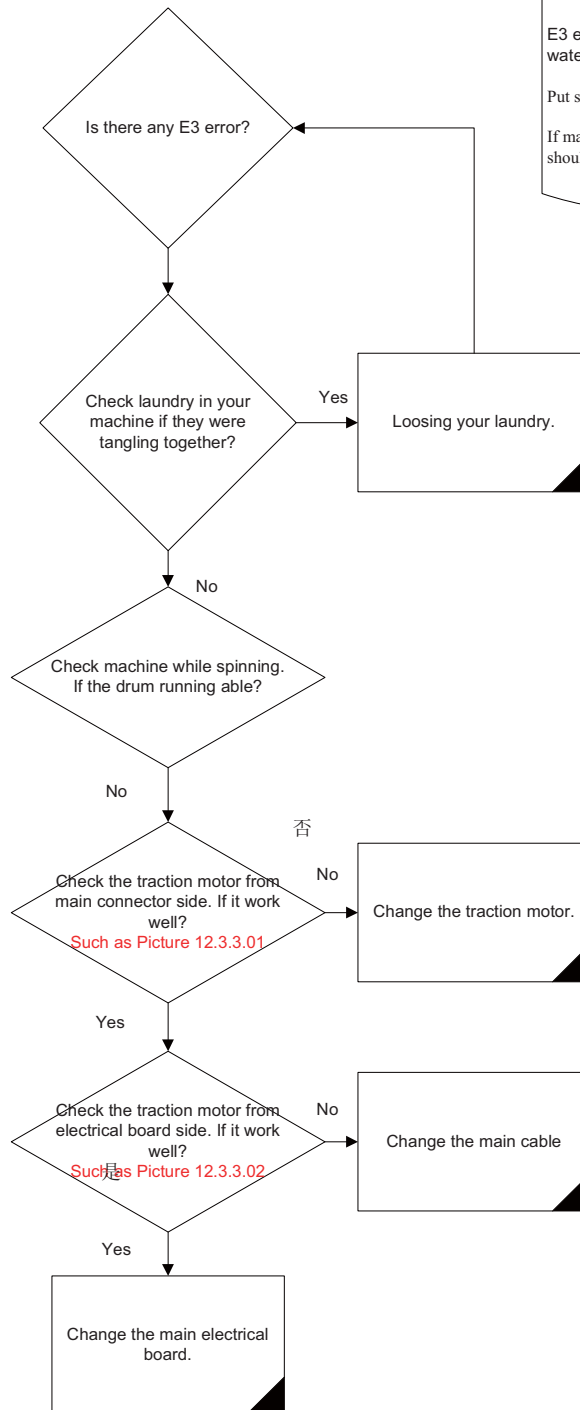


12.3.3. E3

*Machine can't spin.

E3

*Unbalance error



Important Note:

E3 error mostly cause by loading in side drum. Strong water imbibitions loads more easy to lead to unbalance.

Put suitable loads will helpful to reduce the issue.

If machine giving E3 error still after you done above steps, you should call after sales servers.

Picture 12.3.3.01

Check the resistance of the traction motor from main cable connector side.



Picture 12.3.3.02

Check the resistance of the traction motor from electrical board side.

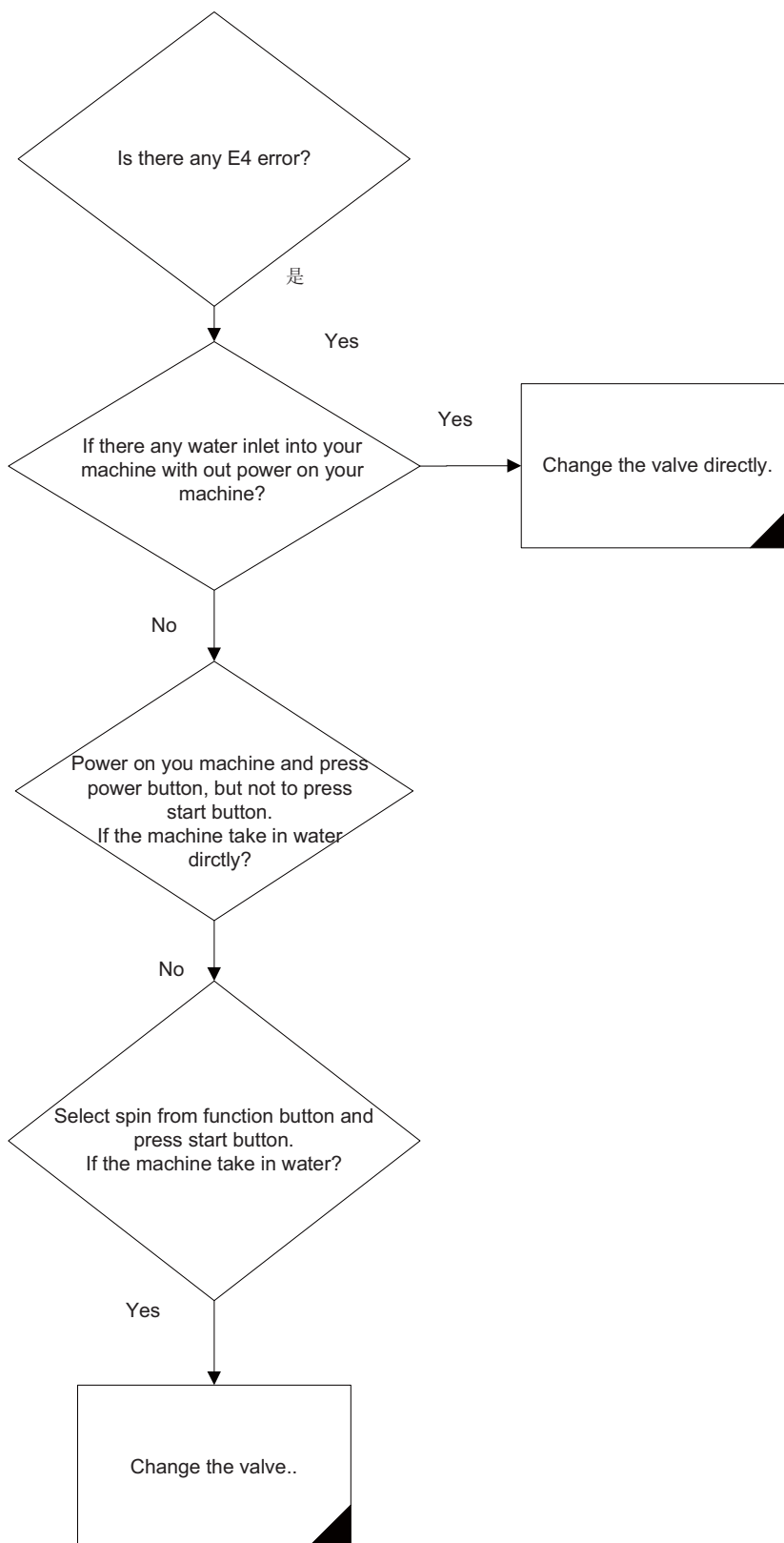


12.3.4. E4

*Water pull over from the tub.
*Machine take in water always.
*Machine can't start to spin.

E4

*Over flow error



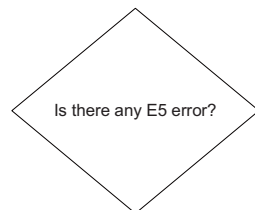
12.3.5. E5

*Machine can't work.
* E5 showing on the screen always.

E5

* Water level sensor reading error

Remove the abnormal affectation and repower machine again.



Yes

Check the cable connect from electrical board side.
If the resistance according to
Picture 12.3.5.01?

Yes

Check the capacitor of the pressure sensor pins from the connector of electrical board.
If the capacitor according to?
Such as Picture 12.3.5.02

Yes

Change the electrical board.

No

Check the connection of the cable and pressure sensor.
If there is any abnormal?
Such as Picture 12.3.5.03

No

No

Check the connection of the cable.
If the cables are in good contact?
Such as Picture 12.3.5.04

No

Change main cable

是

Change the pressure sensor.

Picture 12.3.5.01

Check the resistance of pressure sensor from electrical board side.



Picture 12.3.5.02

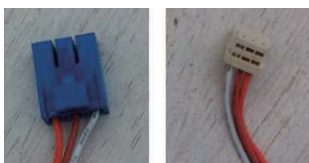
Check the capacitor of the pressure sensor pins from the connector of electrical board.



* Capacitor of white cable and red same with red and orange.

Picture 12.3.5.04

Check the connection of the pressure sensor cable one by one..



Picture 12.3.5.03

Check the capacitor of the pressure sensor pins from the connector of electrical board.



12.3.6. E6

*Machine can't spin.

E6

*Safety switch broken.
*Safety switch cable broken.
*Electrical board broken.

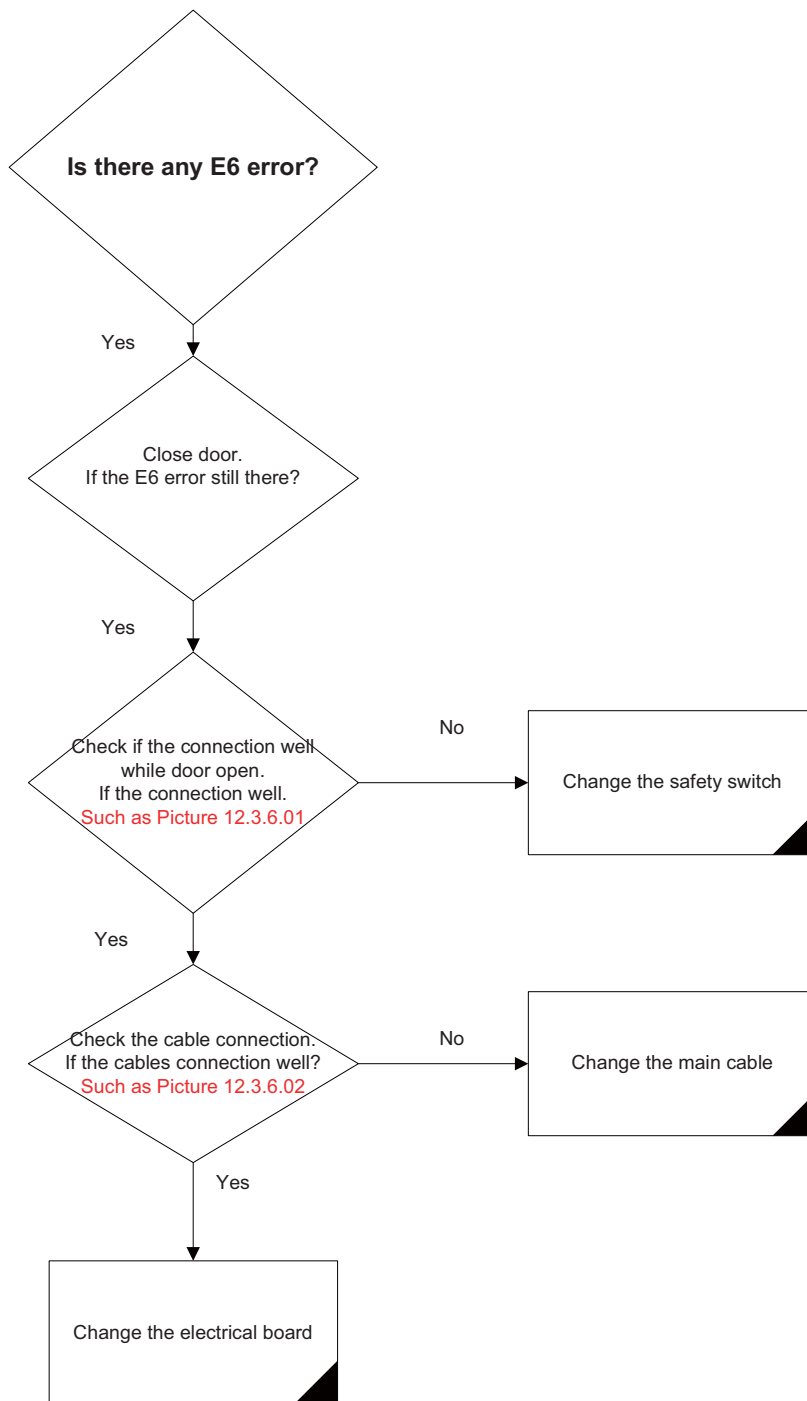
Picture 12.3.6.01

Check if the connection well while door open.
Please un-plug the power while checking.



Picture 12.3.6.02

Check the cable connection.



12.3.7. Water Intake from Wrong Compartment

