



**Electrolux**

**ELECTROLUX HOME PRODUCTS PTY LTD**  
ABN 51 004 762 341

Technical Publication N° DW1100

Issue: 3  
Date: 08/18

***2014 WESTINGHOUSE  
HOUSEHOLD DISHWASHER***

***MODEL:***

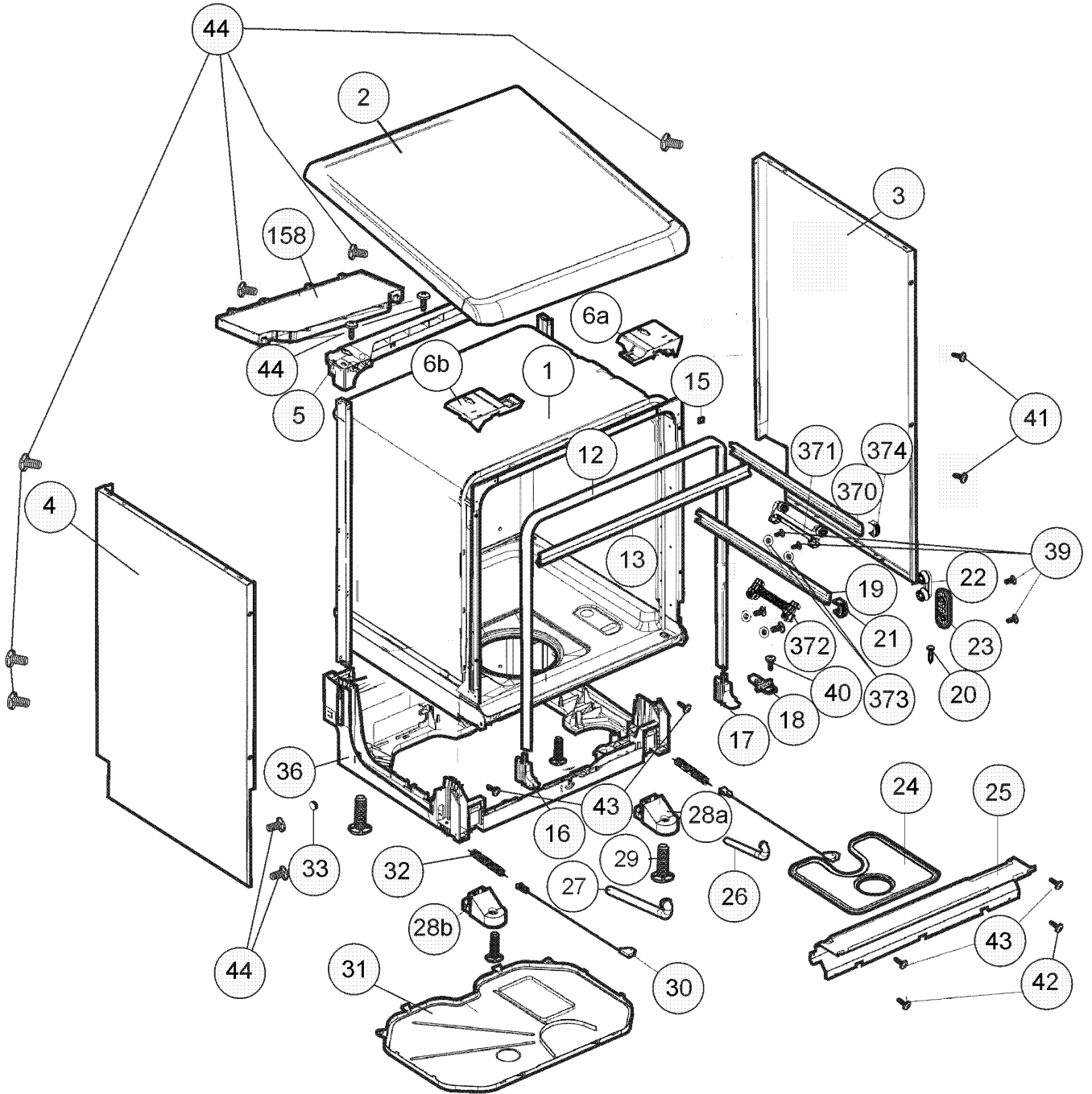
**WSF6608X  
PNC 942001222 01**

<b>Release Dates</b>	
<b>WSF6608XW / 942001222 01</b>	2016

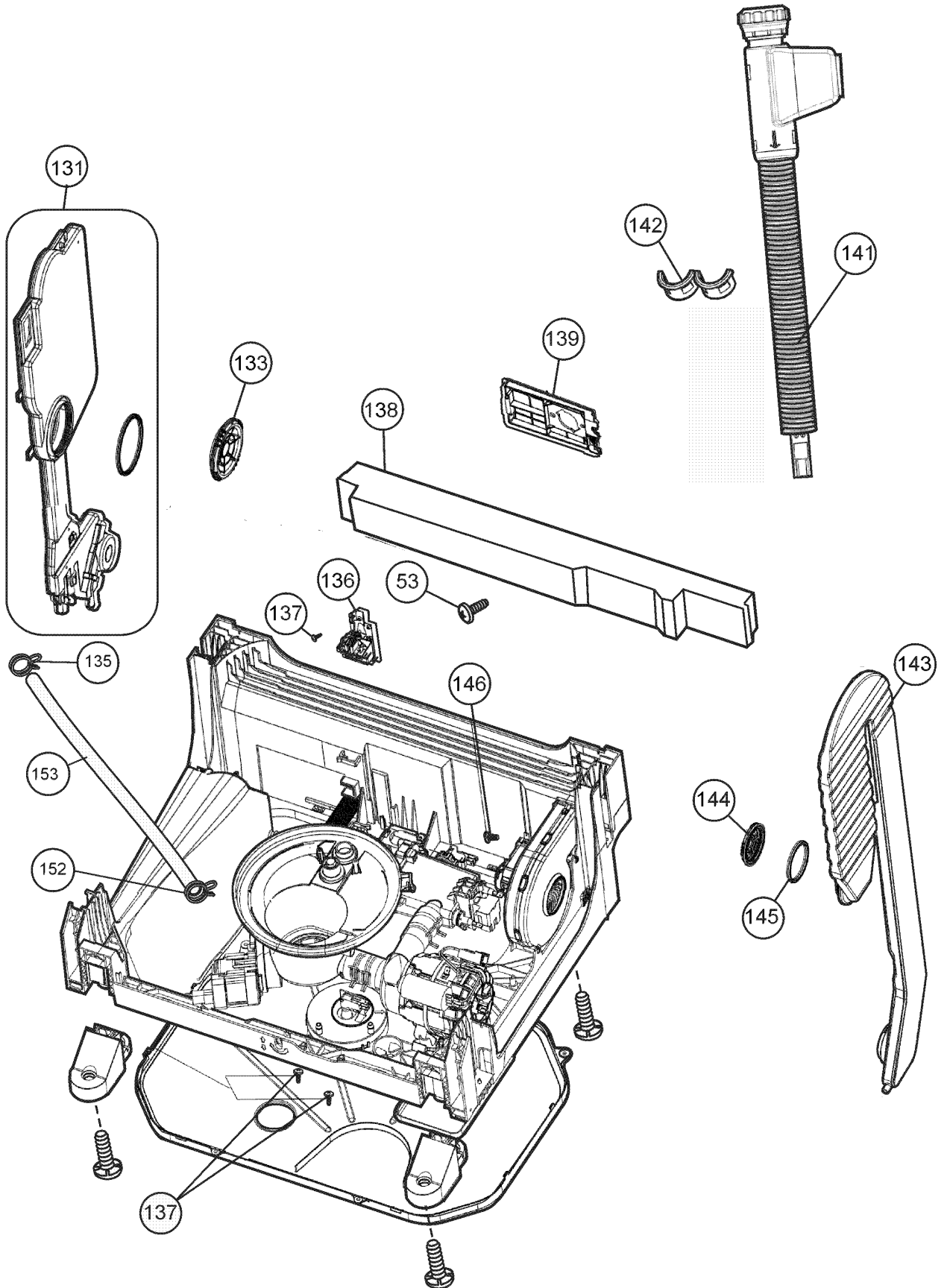
<b>CONTENTS</b>	<b>PAGE N°</b>
VARIANT CHANGE SUMMARY and RELEASE DATES	2
CONTENTS	3
GENERAL ASSEMBLY	4 & 5
LOWER HYDRAULIC ASSEMBLY	6 & 7
MID HYDRAULIC ASSEMBLY	8 & 9
DOOR ASSEMBLY	10 & 11
PANEL CONTROL ASSEMBLY	12 & 13
ELECTRICAL COMPONENTS	14
BASKET UPPER ASSEMBLY	15
BASKET LOWER ASSEMBLY	16
FRAME TRAY CUTLERY UPPER ASSEMBLY	17
CIRCUIT DIAGRAM	18
LEGEND	19
DISHWASHER ACCESSORY COMPONENTS	20

**NOTE:** In Parts Listings

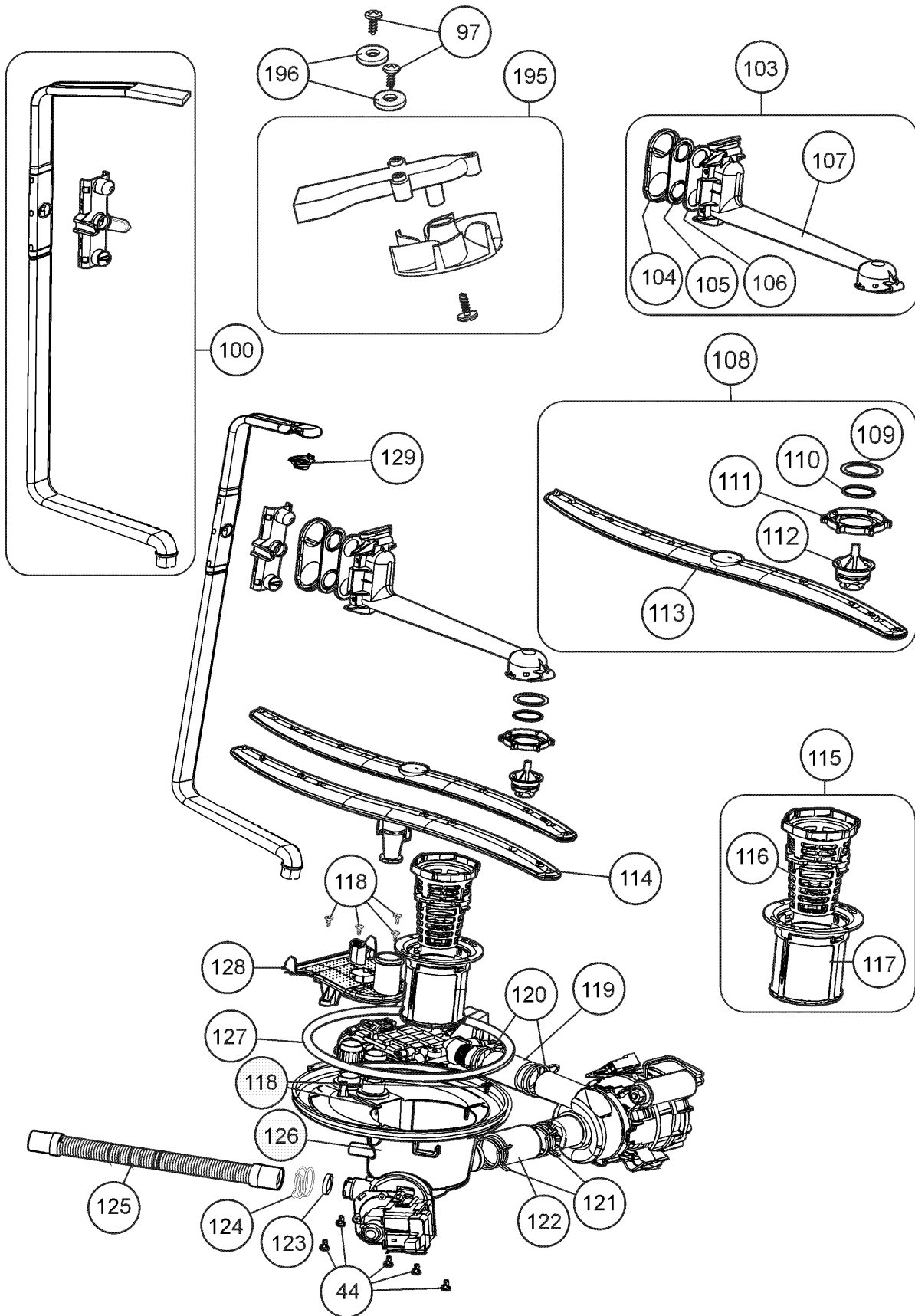
N.I. = Not Illustrated  
N.P.A. = No Part Available  
N.P.N. = Not Used on this Model



ITEM	PART N°	DESCRIPTION	Ex. VIEW 8070	QTY
1	<i>N.P.A.</i>	TUB ASSEMBLY		-
2	<b>42068579</b>	WORKTOP - GREY		1
3	<b>20745115</b>	PANEL SIDE - RIGHT HAND		1
4	<b>20745116</b>	PANEL SIDE - LEFT HAND		1
5	<b>42005867</b>	SUPPORT CROSS BAR REAR		1
6a	<b>42094889</b>	SUPRORT WORKTOP RIGHT		1
6b	<b>42094890</b>	SUPRORT WORKTOP LEFT		1
12	<b>42064240</b>	GASKET SEAL DOOR		1
13	<b>42022756</b>	GASKET SEAL TUB TOP		1
15	<i>N.P.A.</i>	CUP SCREW		-
16	<i>N.P.A.</i>	SUPPORT GASKET SEAL TUB LH (Part of Item 12)		-
17	<i>N.P.A.</i>	SUPPORT GASKET SEAL TUB RH (Part of Item 12)		-
18	<b>37015415</b>	LATCH DOOR		1
19	<b>20797564</b>	RAIL BASKET UPPER		2
20	<b>42021919</b>	STOP REAR RAIL UPPER BASKET		2
21	<b>42021918</b>	STOP FRONT RAIL UPPER BASKET		2
22	<b>42062738</b>	ROLLER RAIL UPPER BASKET		4
23	<b>42008680</b>	SUPPORT REAR ROLLER RAIL		4
24	<b>37019670</b>	FILTER PRIMARY ST/ST		1
25	<b>37025421</b>	PANEL FRONT COVER		1
26	<b>42041125</b>	HOSE OVERFLOW - RIGHT		1
27	<b>42041126</b>	HOSE OVERFLOW - LEFT		1
28A	<b>42046170</b>	SUPPORT LEG LEVELING - LEFT		1
28B	<b>42045390</b>	SUPPORT LEG LEVELING- RIGHT		1
29	<b>42052932</b>	LEG LEVELING		4
30	<b>47001133</b>	CORD HINGE		2
31	<b>42070786</b>	TRAY SPILLAGE		1
32	<b>37019790</b>	SPRING HINGE (PURPLE)		2
33	<b>42107473</b>	PULLEY HINGE		2
36	<i>N.P.A.</i>	BASEMENT		-
39	<b>37007076</b>	SCREW PT5x20 TORX		8
40	<b>37006233</b>	SCREW M4x6 YSB SPIRAL		1
41	<b>37018398</b>	SCREW ST 3.9x9.5 PAN HEAD (S)		4
42	<b>37006201</b>	SCREW PT3.5x9 YSB		2
43	<b>37008662</b>	SCREW M4x10 YSB SPIRAL		4
44	<b>37006212</b>	SCREWPT4x12YSB		12
158	<b>42070464</b>	COUNTERWEIGHT CONCRETE UPPER		1
370	<b>37016585</b>	RAIL TRAY CUTLERY		2
371	<b>42067808</b>	ROLLER RAIL TRAY CUTLERY-R/H		1
372	<b>42067809</b>	ROLLER RAIL TRAY CUTLERY-L/H		1
373	<b>37016714</b>	WASHER TRAY CUTLERY		4
374	<b>42067798</b>	STOP FRONT RAIL TRAY CUTLERY		2



ITEM	PART N°	DESCRIPTION	Ex. VIEW 8068	QTY
53	<b>37010849</b>	SCREW PHCC4.2*32		1
131	<b>42153776</b>	TANK SIDE AIR BREAK + FLOW METER		1
133	<b>42020657</b>	VENT AIR BREAK NUT		1
135	<b>37001625</b>	CLAMP DAI16.8X8.4		1
136	<b>32012071</b>	FILTER EMC		1
137	<b>37006787</b>	SCREW PT3X9 YSB		3
138	<b>47000819</b>	COUNTERWEIGHT CONCRETE LOWER		1
139	<b>42008681</b>	COVER DRAIN HOSE BASEMENT		1
141	<b>32018148</b>	HOSE SAFETY		1
142	<b>42020119</b>	CLAMP HOSE SAFETY		1
143	<b>42051787</b>	CONDERSER STEAM CONTAINER		1
144	<b>42017253</b>	NUT CONTAINER ACTIVE DRY		1
145	<b>42051789</b>	SEAL CONTAINER CONDERSOR UNIT		1
146	<b>N.P.A.</b>	SCREW MOTOR FAN TURBO		1
152	<b>37002755</b>	CLAMP. MAX19.6X8.8		1
153	<b>42039975</b>	HOSE DIA10.5X3.2X295		1



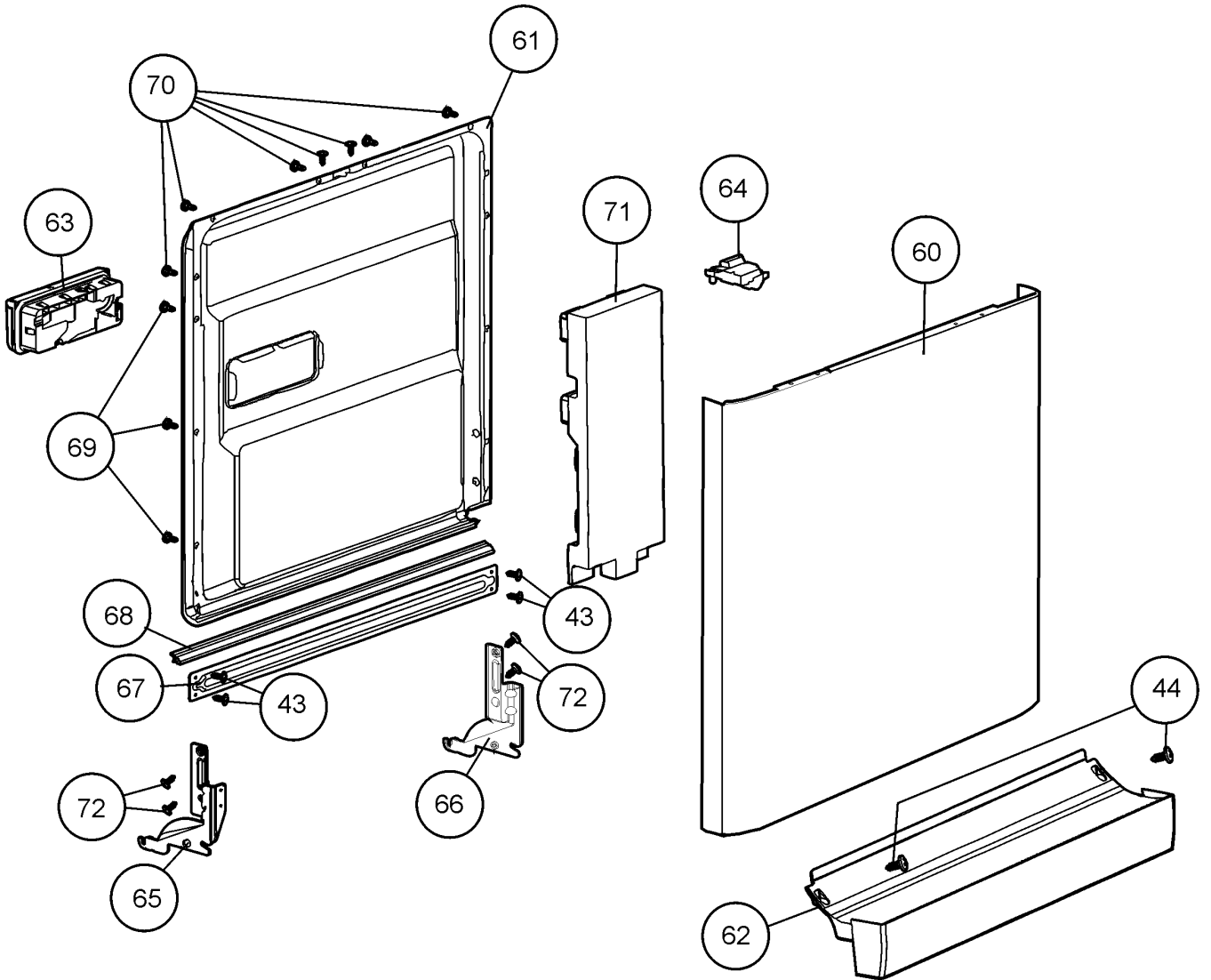


ITEM	PART N°	DESCRIPTION	Ex. VIEW 8140	QTY
44	37006212	SCREWPT4X12YSB		5
97	37015420	SCREW PT4x8 PAN HEAD COLLAR		2
100	42065987	TUBE FEED UPPER SPRAYARM		1
103	42021922	TUBE UPPER SPRAY ARM FEEDING		1
104	42021095	COVER REAR UPPER SPRAY ARM		1
105	42005883	SEAL ADAPTOR UPPER SPRAY ARM		1
106	N.P.A.	ADAPTOR FLANGE UPPER SPRAY ARM (Part of Item 103)		-
107	N.P.A.	TUBE UPPER SPRAY ARM (Part of Item 103)		-
108	42021921	SPRAY ARM UPPER BASKET COMP		1
109	42005910	NUT UPPER SPRAY ARM		1
110	42005897	GROMMET UPPER SPRAY ARM		1
111	42021093	NUT SPRAY ARM UPPER		1
112	42022023	ADAPTOR UPPER SPRAY ARM		1
113	42021090	UPPER		1
114	42021087	SPRAY ARM LOWER		1
115	42035214	FILTER ASSEMBLY		1
116	42021086	FILTER COARSE (Part of Item 115)		1
117	42035215	FILTER MICRO (Part of Item 115)		1
118	37006363	SCREW PT4X12 YSB INOX		4
119	42016284	HOSE TO RECIRC.28.5X3		1
120	37006205	CLAMP ØMAX36.4X14		1
121	37006204	CLAMP ØMAX41X14.8		1
122	42016283	HOSE RECIRC TO SUMP.33X3		1
123	42008732	VALVE NON-RETURN		1
124	37012308	CLAMP		1
125	42005936	HOSE DRAIN		1
126	42005958	SUMP		1
127	42005959	SEAL SUMP		1
128	42021098	SUPPORT LOWER SPRAY ARM		1
129	42022065	NOZZLE PIPE FEED		1
195	42067892	IMPELLER TOP TUB ASSEMBLY		1
196	42067893	WASHER RUBBER TUB TOP		2

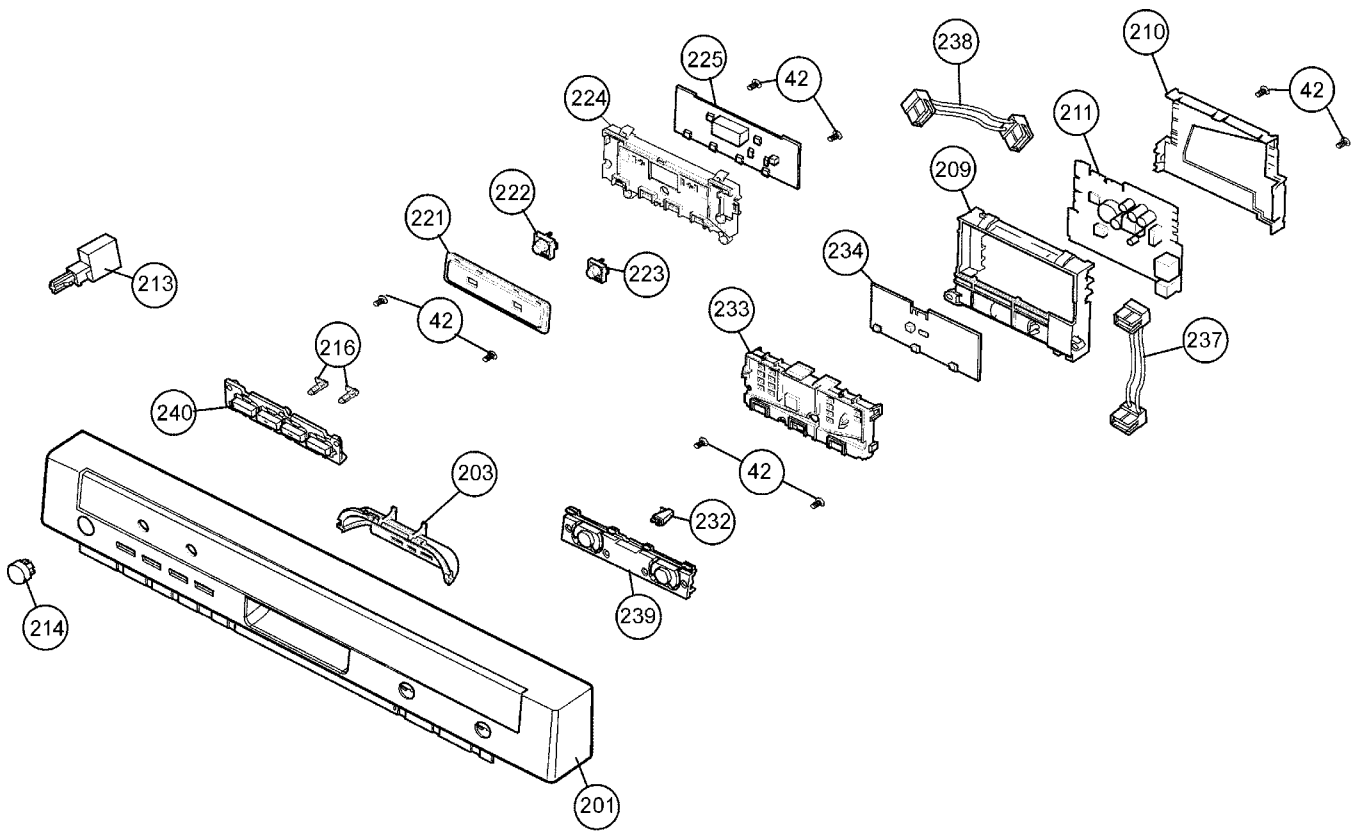
**NOTE:** If a Customer needs to extend their Drain Hose, order the following components:

1x 0571400142 Hose Drain (2M length), 1x 0182200002 Ferrule Hose Joiner (19mm) and 2x W011 Clamp.

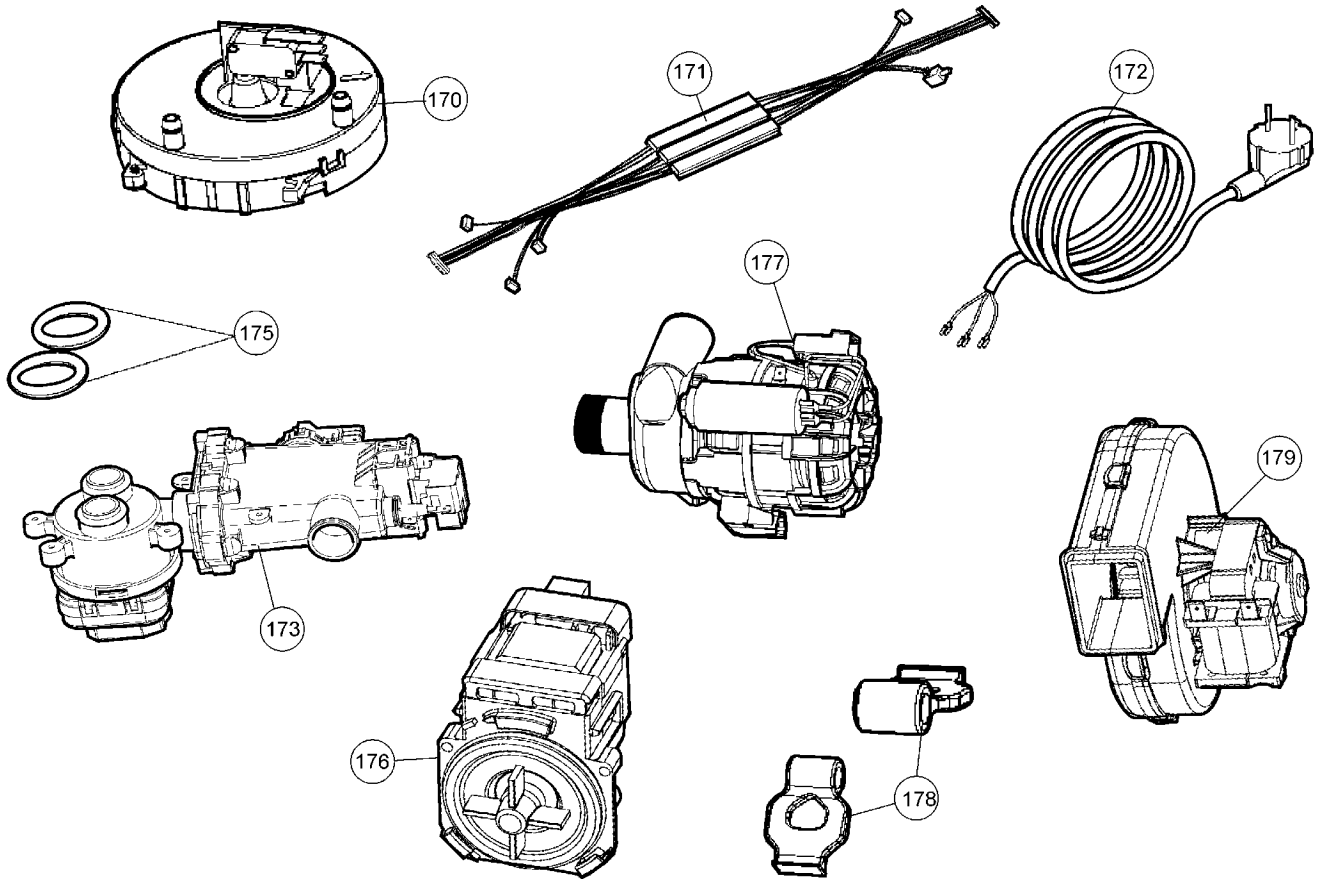
For extensions less than 2 metres, use ES5323K Kit Hose Flex Drain (1M)



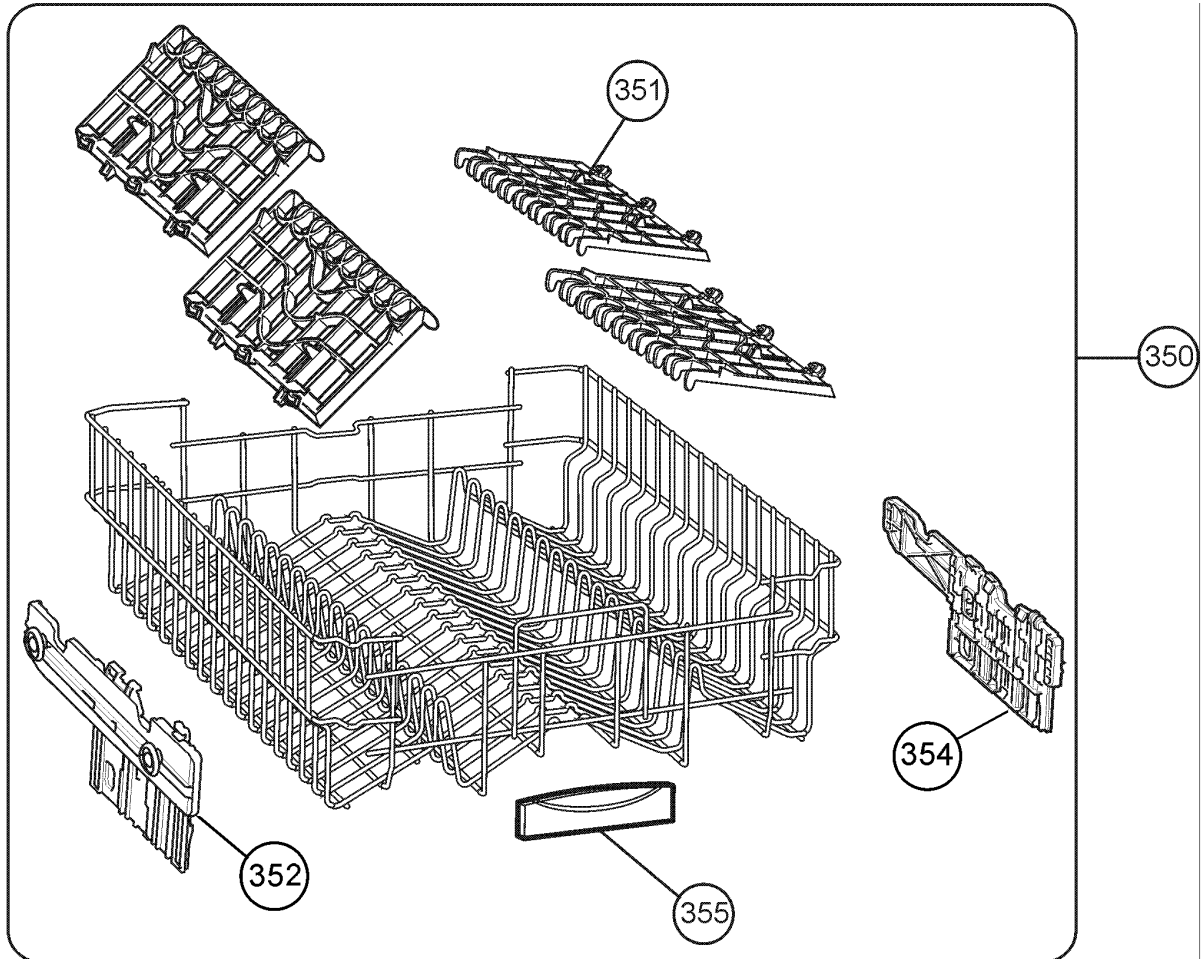
<b>ITEM</b>	<b>PART N°</b>	<b>DESCRIPTION</b>	<b>Ex. VIEW 8061</b>	<b>QTY</b>
43	<b>37008662</b>	SCREW M4 x 10 YSB SPIRAL		4
44	<b>37006212</b>	SCREWPT4 x 12YSB		2
60	<b>20853325</b>	PANEL FRONT DOOR - INOX		1
61	<b>20755160</b>	PANEL INNER DOOR		1
62	<b>42066090</b>	PANEL KICK PLASTIC - GREY		1
63	<b>42058476</b>	DISPENSER		1
64	<b>32013875</b>	LOCK DOOR UNIT		1
65	<b>37015330</b>	HINGE - LEFT HAND		1
66	<b>37015329</b>	HINGE - RIGHT HAND		1
67	<b>20634463</b>	BRACKET HINGE SUPPORT		2
68	<b>42064225</b>	GASKET DOOR BOTTOM		1
69	<b>37006339</b>	SCREW SAC 3.9 x 12 YHB INOX		6
70	<b>37006340</b>	SCREW PT4 x 14 YHB INOX		8
71	<b>52008512</b>	SUPPORT DOOR STYROFOAM		1
72	<b>37006361</b>	SCREW M5 x 10 THB INOX BIXI		4



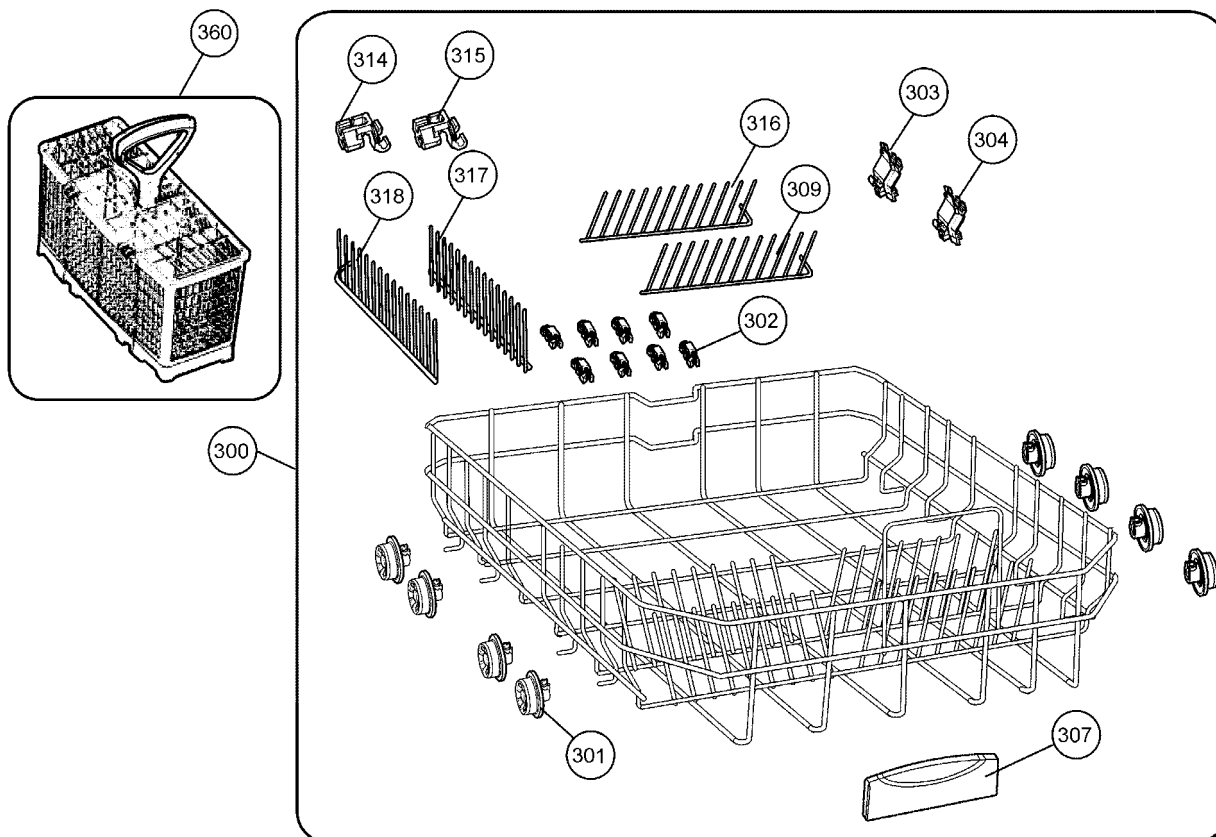
<b>ITEM</b>	<b>PART N°</b>	<b>DESCRIPTION</b>	<b>Ex. VIEW 8066</b>	<b>QTY</b>
42	<b>37006201</b>	SCREW PT3.5 x 9 YSB		6
201	<b>42088430</b>	PANEL CONTROL GREY - WSF6608X		1
203	<b>42084211</b>	HANDLE - GREY		1
209	<b>42058783</b>	P.C.B. BOX DISPLAY (MID)		1
210	<b>42058784</b>	P.C.B. BOX DISPLAY (REAR)		1
211	<b>32029569</b>	P.C.B. ELECTRONIC CARD		1
213	<b>32006362</b>	SWITCH - ON/OFF		1
214	<b>42075065</b>	BUTTON - ON/OFF - GREY		1
216	<b>42065965</b>	BUTTON SHAFT		2
221	<b>N.P.A.</b>	COVER BUTTON (Part of Item 224)		-
222	<b>42075078</b>	BUTTON DISPLAY		1
223	<b>42075077</b>	BUTTON DISPLAY		1
224	<b>42080724</b>	P.C.B. BOX DISPLAY		1
225	<b>32025280</b>	P.C.B. DISPLAY CARD		1
232	<b>42065964</b>	BUTTON SHAFT/PAGOS		1
233	<b>42058782</b>	P.C.B. BOX DISPLAY (FRONT)		1
234	<b>32013843</b>	P.C.B. DISPLAY CARD		1
237	<b>32015166</b>	CABLE DISPLAY		1
238	<b>32015192</b>	CABLE DISPLAY		1
239	<b>42111761</b>	BUTTON PROGRAM		1
240	<b>42075064</b>	BUTTON OPTIONS		1



ITEM	PART N°	DESCRIPTION	Ex VIEW 8071	QTY
170	<b>32010355</b>	FLOATER-WITH TWO SCREWS		1
171	<b>32018952</b>	CABLE HARNESS		1
172	<b>32004641</b>	POWER CABLE 180cm/AUSTRALIA/WHITE		1
173	<b>32004303</b>	HEATER, DIVERTER, NTC & PRESSURE SENSOR ASSY		1
175	<b>42016285</b>	HEATER CASING O-RING		1
176	<b>32015595</b>	DRAIN PUMP HANYU B30-6A		1
177	<b>32001602</b>	WASHING PUMP/ASENKRON		1
178	<b>42008724</b>	WASHING PUMP VINE SUPPORT		1
179	<b>32004535</b>	MOTOR FAN TURBO		1

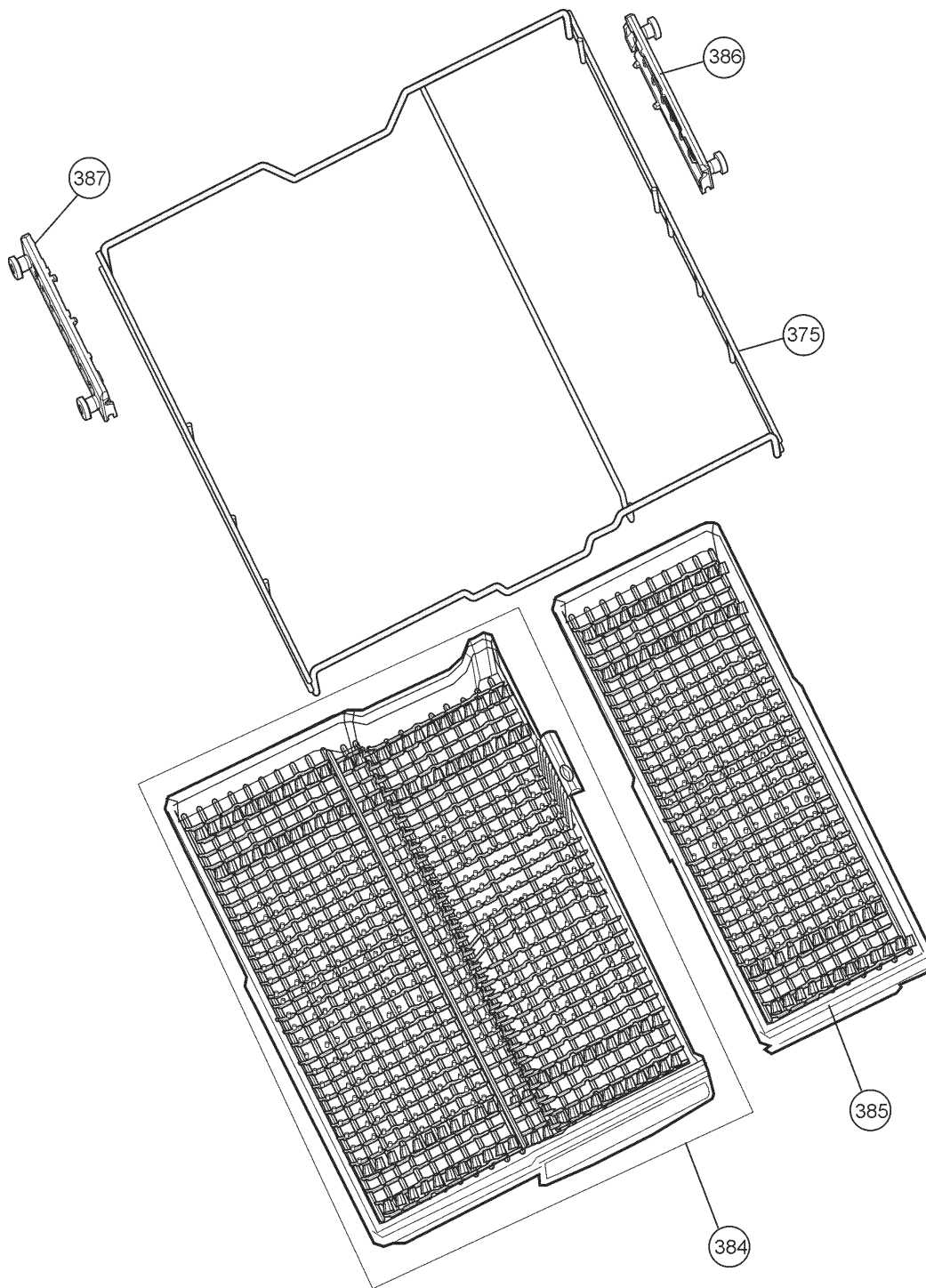


ITEM	PART N°	DESCRIPTION	Ex. VIEW 8065	QTY
350	37021971	BASKET UPPER COMPLETE ASSY		1
351	42056763	RACK CUP UPPER BASKET		4
352	<i>N.P.A.</i>	<i>PLATE EASYLIFT L/H</i> (Part of Item 350)		-
354	<i>N.P.A.</i>	<i>PLATE EASYLIFT r/H</i> (Part of Item 350)		-
355	42021081	HANDLE UPPER BASKET ASSY		1

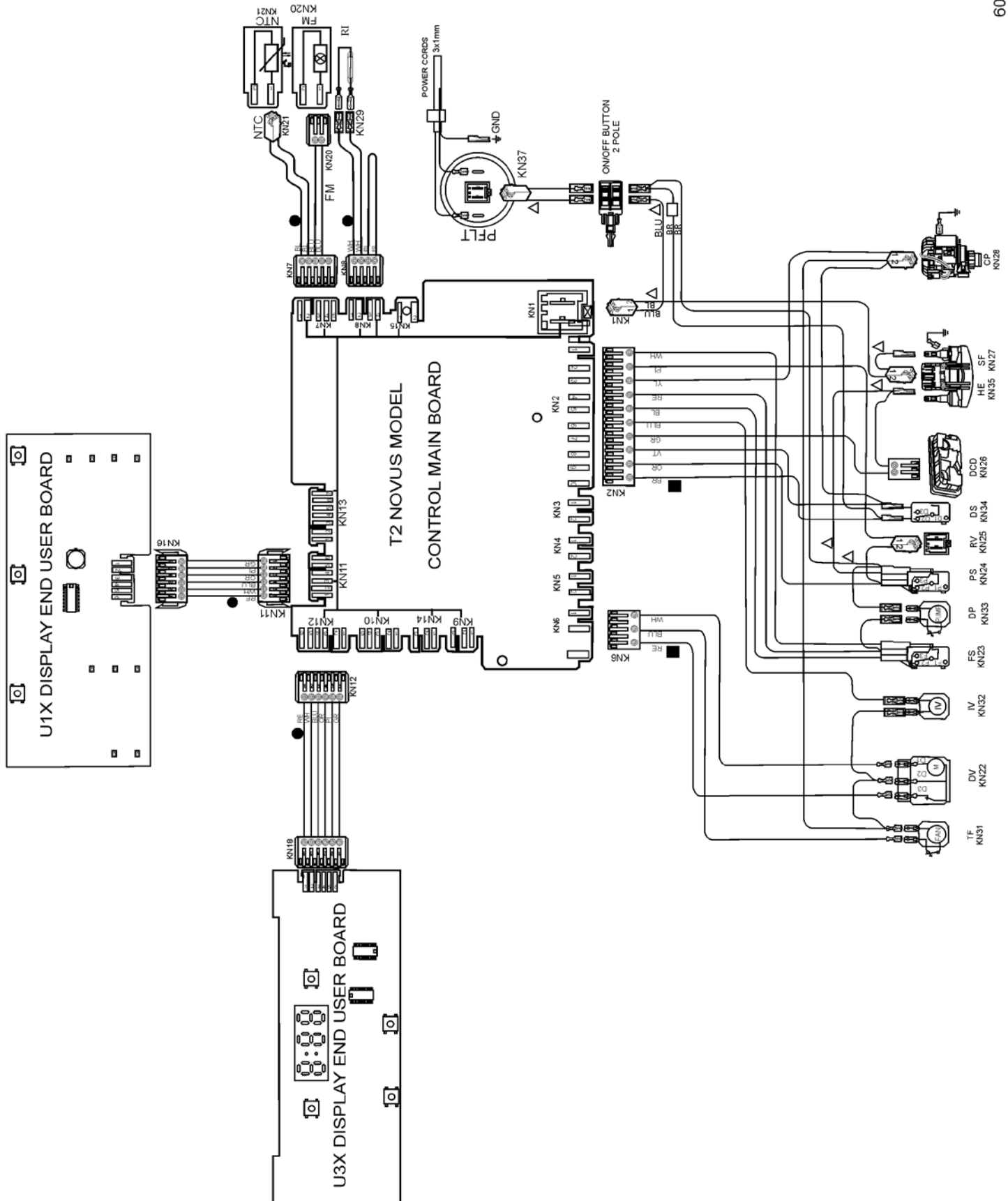


ITEM	PART N°	DESCRIPTION	Ex. VIEW 8064	QTY
300	<b>37022454</b>	BASKET LOWER COMPLETE ASSY		1
301	<b>42052035</b>	WHEEL BASKET LOWER		8
302	<b>42021078</b>	CLIP RACK FOLD DOWN		8
303	<b>42021904</b>	CLIP FOLD DOWN - REAR		1
304	<b>42021077</b>	CLIP FOLD DOWN - FRONT		1
307	<b>42021905</b>	HANDLE BASKET LOWER ASSY		1
309	<b>37012907</b>	RACK FOLD DOWN - FRONT		1
314	<b>42046132</b>	CLIP FOLD DOWN - LEFT		1
315	<b>42046133</b>	CLIP FOLD DOWN- RIGHT		1
316	<b>37012906</b>	RACK FOLD DOWN - REAR		1
317	<b>37012908</b>	RACK FOLD DOWN- RIGHT		1
318	<b>37012909</b>	RACK FOLD DOWN- LEFT		1
360	<b>42091579</b>	BASKET CUTLERY HALF- GREY		1





ITEM	PART N°	DESCRIPTION	Ex. VIEW 8139	QTY
375	<b>37016706</b>	FRAME TRAY CUTLERY UPPER		1
384	<b>42076111</b>	TRAY CUTLERY LARGE - LEFT		1
385	<b>42067792</b>	TRAY CUTLERY SMALL - RIGHT		1
386	<b>42067806</b>	WHEELS TRAY CUTLERY - RIGHT		1
387	<b>42067807</b>	WHEELS TRAY CUTLERY - LEFT		1



**IMPORTANT SAFETY NOTICE**  
This diagram has been prepared for use by electrically qualified service technicians. Electrolux cannot be held responsible for the interpretation of its service publications nor for any injury or damage that may occur in connection with their use.

TS	- TURBIDITY SENSOR
RI	- RINSE AID INDICATOR
SI	- SALT INDICATOR
FM	- FLOWMETER
NTC	- NTC SENSOR
DV	- DIVERTER
IV	- INLET VALVE
FS	- FLOAT SENSOR
DP	- DRAIN PUMP
F	- TURBO FAN
PS	- PRESSURE SWITCH
DS	- DOOR SWITCH
DE	- AC DISPENSER
HE	- HEATING ELEMENT
CP	- CIRCULATION PUMP
C	- CAPASITOR
RV	- REGENERATION VALVE
SF	- HEATING SAFETY
RW	- ROTARY SWITCH
BLDC	- BLDC PUMP
PST	- POWER SUPPLY TERMINAL
MS	- MAIN SWITCH
DUB	- DISPLAY END USER BOARD
U1X	- DISPLAY END USER BOARD
U2X	- DISPLAY END USER BOARD
U3X	- DISPLAY END USER BOARD
SFL	- SAFETY LOCK
LM	- LIGHT MODUL
DCD	- DC DISPENSER
ALM	- AMBIENT LIGHT MODULE
PSW	- PRESSURE LEVEL SWITCH
WHS	- WATER HARDNESS SENSOR
CULCD	- CONTROL UNIT LCD
ATSW	- AUTOMATIC ON/OFF SWITCH
LCD	- LIQUID CRYSTAL DISPLAY
PFLT	- PARASIT FILTER
TRF	- TRANSFORMERS LIGHT MODULE
ALL	- AMBI LIGHT LED
AOD	- AUTOMATIC OPEN DOOR
TFT	- TFT LCD
FC	- FERITE CORE
WRV	- WATER RECYCLING VALVE
WRP	- WATER RECYCLING PUMP
SC	- SILICON CABLE
HIP	- HEATER INTEGATED PUMP
○	- 0.25mm CABLE
●	- 0.35mm CABLE
■	- 0.50mm CABLE
△	- 1.0mm CABLE
▲	- 1.5mm CABLE

OR	: ORANGE
WH	: WHITE
BLU	: BLUE
RE	: RED
BR	: BROWN
PI	: PINK
VI	: VIOLET
BL	: BLACK
GR	: GREEN
YL	: YELLOW
YE/GI	: YELLOW/GREEN
GRY	: GREY

**DISHWASHER  
ACCESSORY COMPONENTS**

**EX. VIEW DRAWING 8155-8159**



ITEM	PART N°	DESCRIPTION	Ex.
1	ACC017	Scalex Plus Descaler Sachet 75gm	
2	ACC100	Detergent Dishwasher 1kg	
3	ACC102	Rinse Aid Additive 500mls	
4	ACC103	Descaler Powder 350g <b>(Dangerous Goods rules apply, min order Qty of 12)</b>	
5	ACC002	Dishwasher Salt 1kg Pack	